

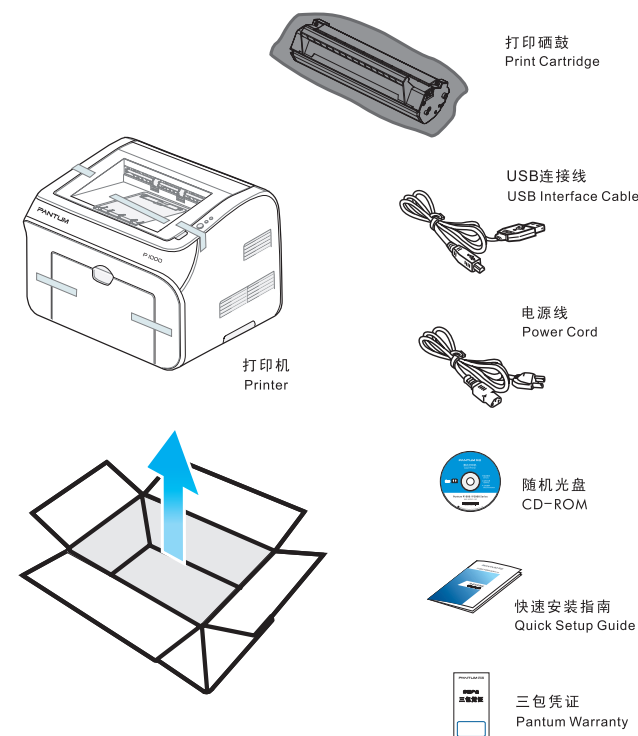
### 快速安装指南 Quick Setup Guide



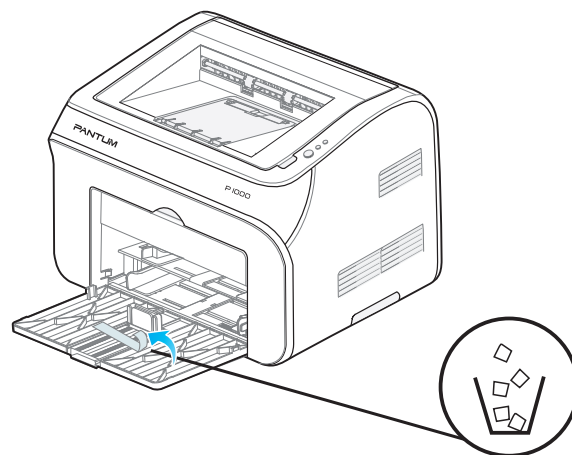
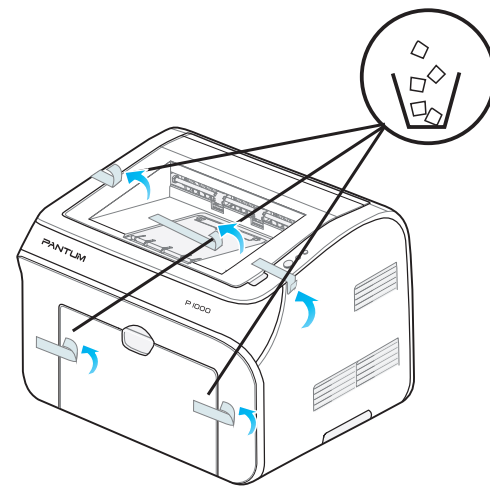
AA2B0316AL0 V 5.0

1

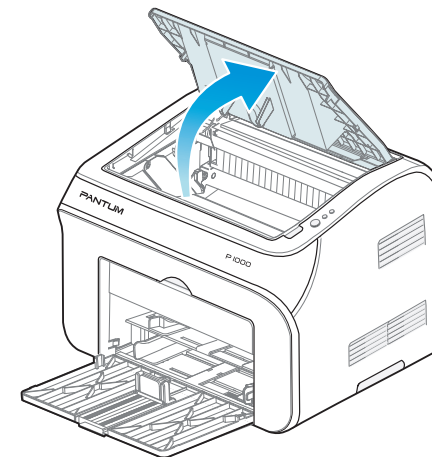
- \* 请根据如下图所示核对包装箱内物品。
- \* Please check the items in the package shown as below.



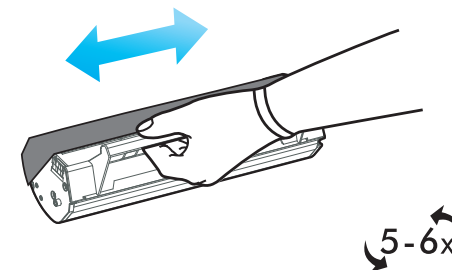
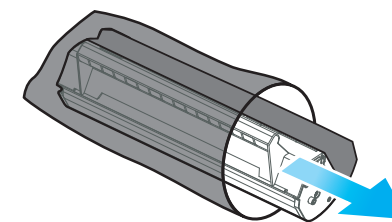
2



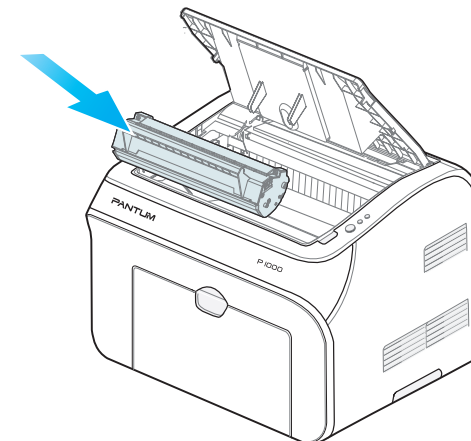
3



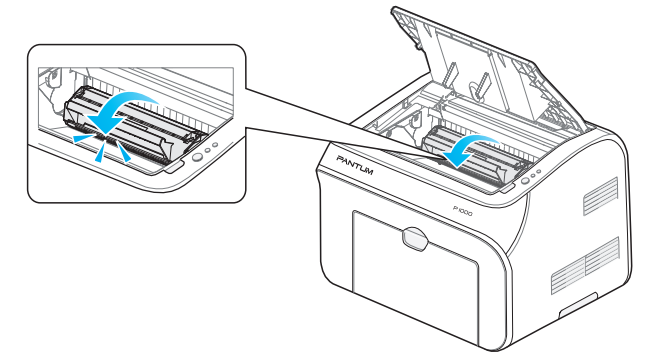
4



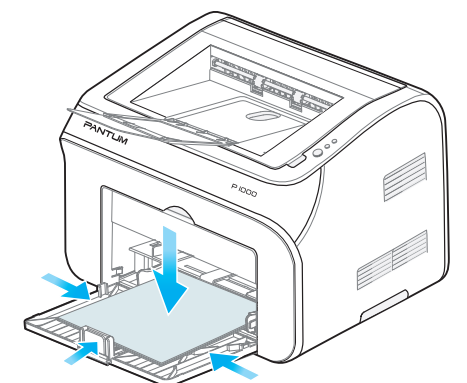
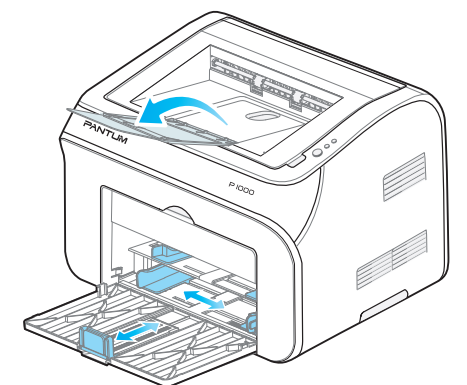
5



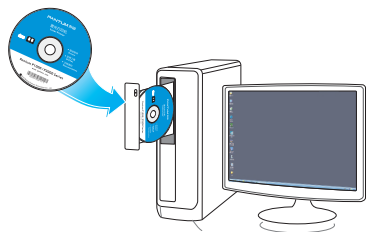
- \* 将打印硒鼓沿导轨装入打印机，沿箭头方向按压并听到“咔嚓”声音，完成安装。
- \* Install the print cartridge along the guide then press it as the arrow shows and a crack sound occurs with its successful installation.



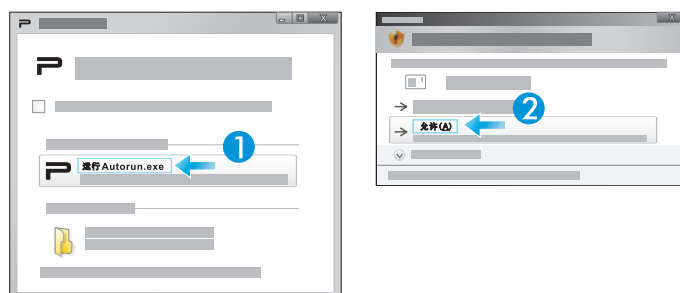
6



7



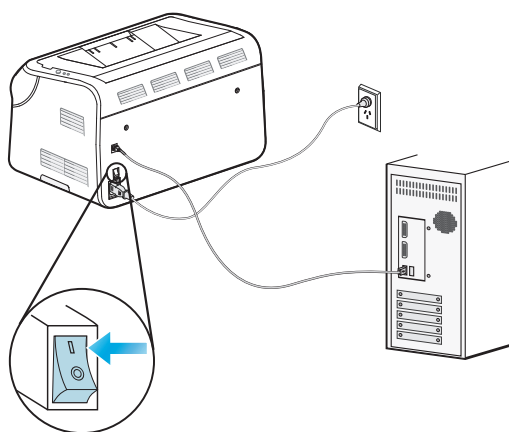
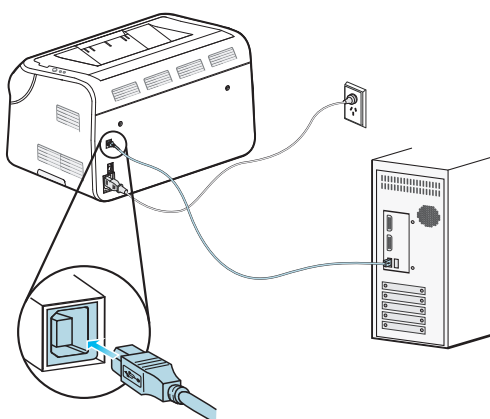
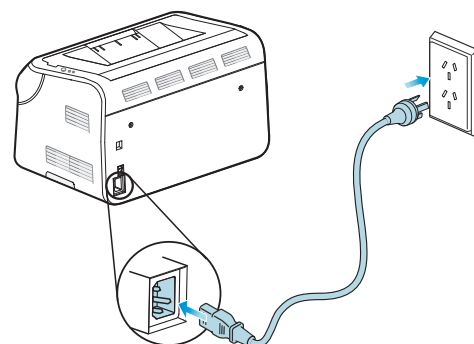
Microsoft® Windows Vista®/Windows®7/Windows Server® 2008



6



8



9



### 补充信息

要了解有关以下主题的详细信息, 请查看打印机附带的随机光盘上的电子版用户指南:

- 故障排除信息
- 重要的安全通知和规章条例信息
- 详细的用户操作步骤

信息也可从以下网站获得:

<http://www.pantum.com>

### Additional Information

See the electronic User Guide on the CD-ROM accompanied with the printer for more information on the following topics:

- Troubleshooting information
- Important safety notices and regulatory information
- Detailed user instructions

This information is also available at

<http://www.pantum.com>

公司名称: 北京奔图科技有限公司  
地址: 北京市海淀区北四环西路66号  
中国技术交易大厦A座20层

邮编: 100080

服务热线: 400-060-1888

公司网址: <http://www.pantum.com>

Company Name: Beijing Pantum Technology Co., Ltd.

Address: 20th Floor, Block A, China Technology Transaction Mansion, No. 66 West Road of the North 4th Ring Road, Hai Dian District, Beijing, 100080, P.R.C

Service Hotline: 400-060-1888

Website: <http://www.pantum.com>

PANTUM