

## START HERE

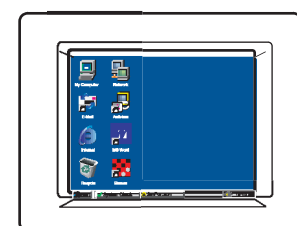


Windows 98, ME, 2000, XP

Windows users: Follow the steps in order. Do not connect the USB cable until instructed to do so.

1

### Turn your PC on

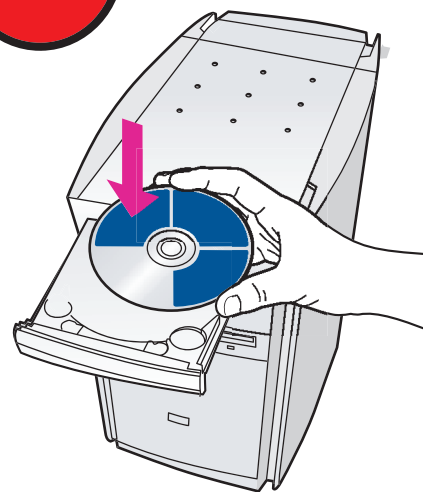


Windows desktop

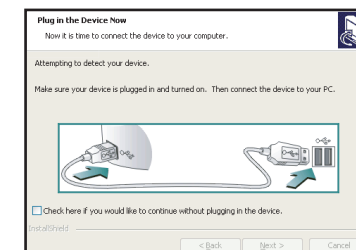
- Turn your PC on and wait for the Windows desktop to appear.
- Close any open programs, including virus-checking programs.

2

### Install the software first



- Insert M510/M610 software CD.
- Follow the onscreen instructions.



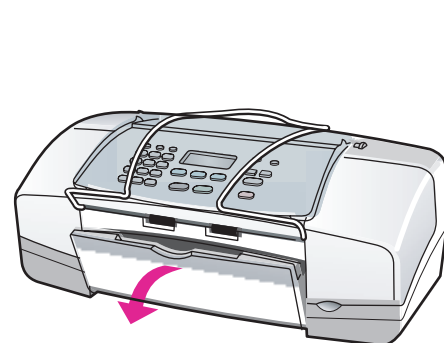
- When prompted to plug in the device (as shown to the left), go to step 3. **Make sure you complete step 3 before connecting the USB cable. Return to your PC in step 10.**



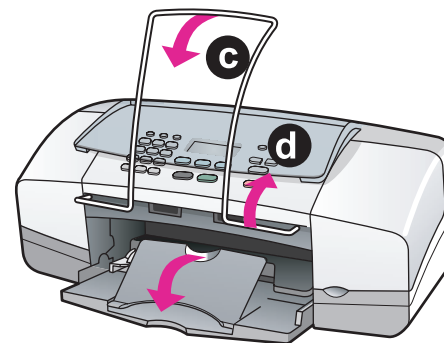
If nothing appears on your computer screen after inserting the CD, search for setup.exe on the CD and double-click the file.

3

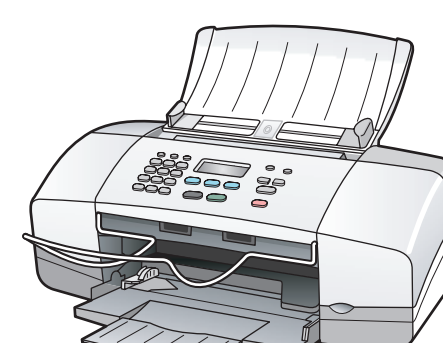
### Unfold the paper trays



a



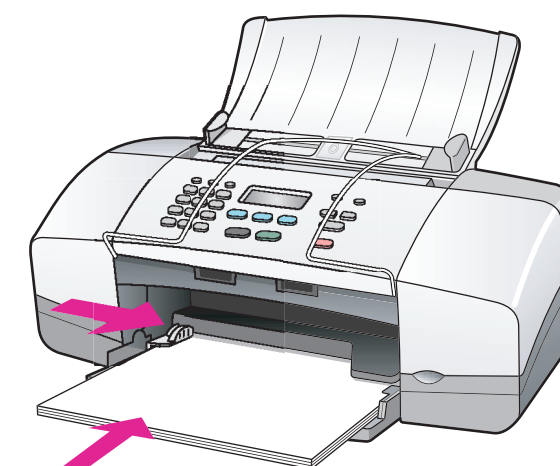
b



Remove any packaging from inside.

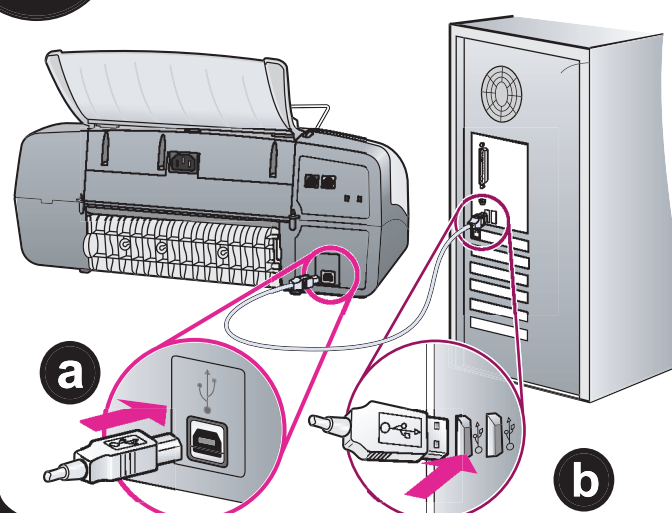
4

### Load plain white paper



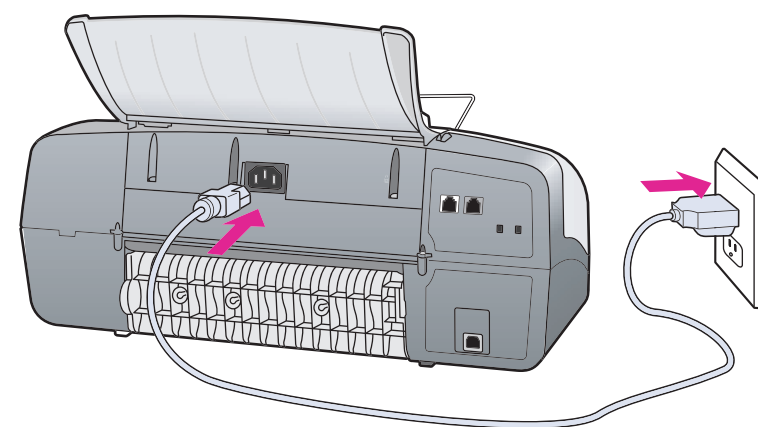
5

### Connect the USB cable, power cord, and phone cord

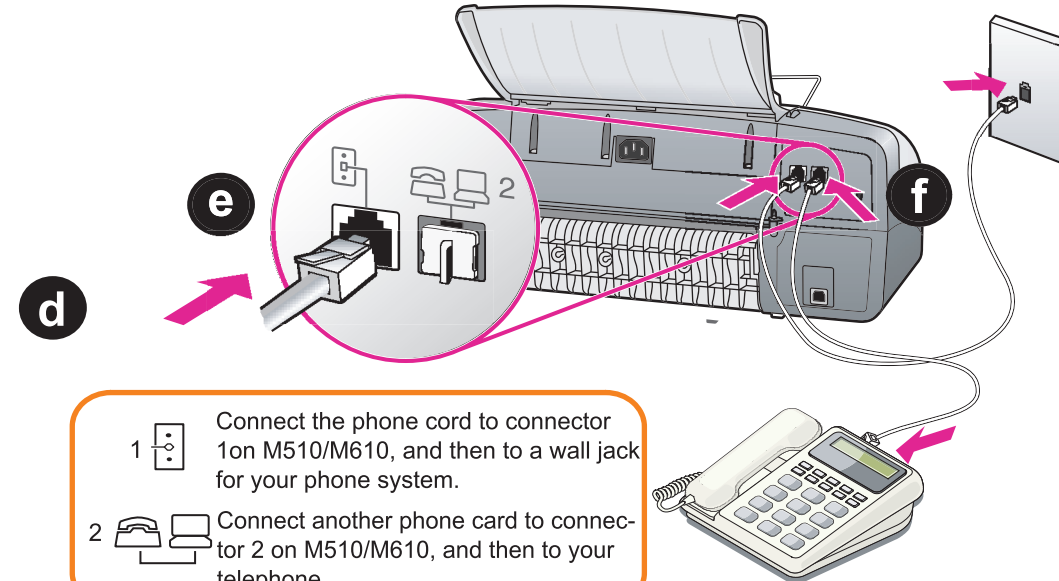


a

Do not connect the USB cable until you see the screen in Step 2. Do not connect the USB cable to a keyboard or non-powered hub.



c



d

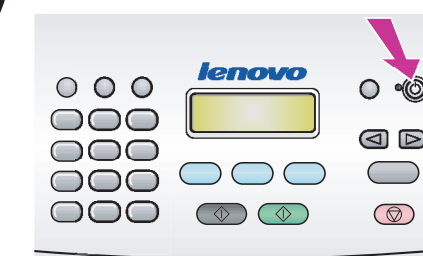
- Connect the phone cord to connector 1 on M510/M610, and then to a wall jack for your phone system.
- Connect another phone card to connector 2 on M510/M610, and then to your telephone.

e

f

6

### Turn the device on and set the display

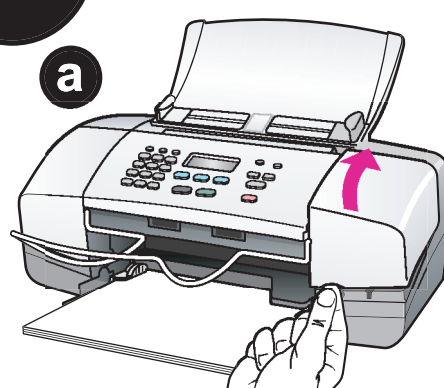


**Turn power on.** Look at the display. Enter the code for your language on the keypad, and then confirm your selection.  
Enter the code for your country/region, and then confirm your selection. If you make a mistake, press **Setup**, **5**, and then **5** again to return to the language menu.

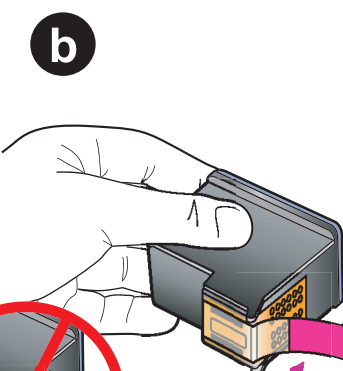
- |              |               |
|--------------|---------------|
| 11 English   | 20 Finnish    |
| 12 French    | 21 Portuguese |
| 13 German    | 22 Russian    |
| 14 Spanish   | 23 Polish     |
| 15 Italian   | 24 Turkish    |
| 16 Swedish   | 25 Hungarian  |
| 17 Danish    | 26 Czech      |
| 18 Norwegian | 27 Greek      |
| 19 Dutch     |               |

7

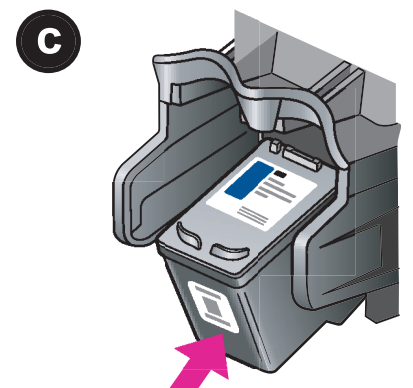
### Insert the print cartridges



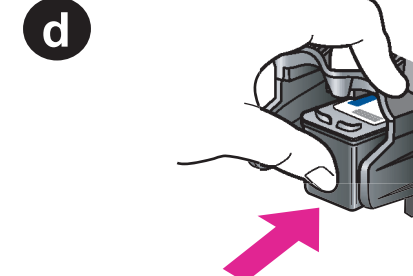
a



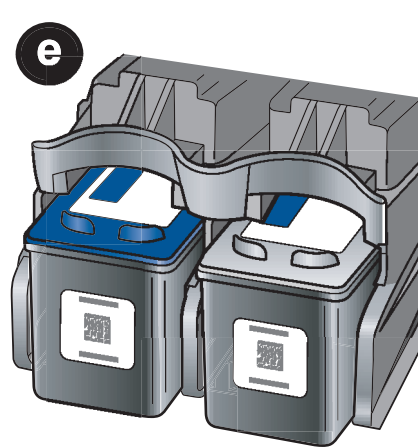
b



c

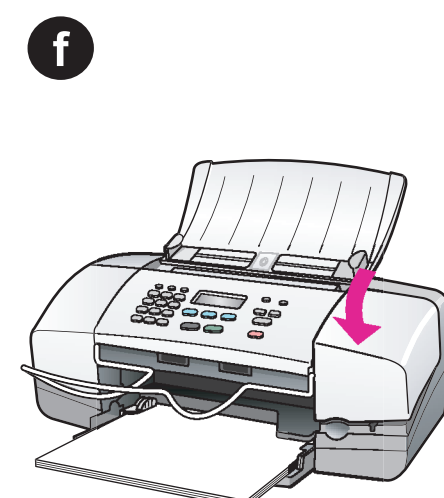


d



e

Color Black



f

- Lift open the print cartridge access door. Wait for the print cartridge to move to the right.

- Use the bright pink pull-tab to remove the clear tape from the print cartridges. Do not touch the gold-colored contacts or re-tape the cartridges.

- Hold the black print cartridge. Slide the cartridge at a slight angle into the right side of the print carriage. See the instructions on the print cartridge access door.

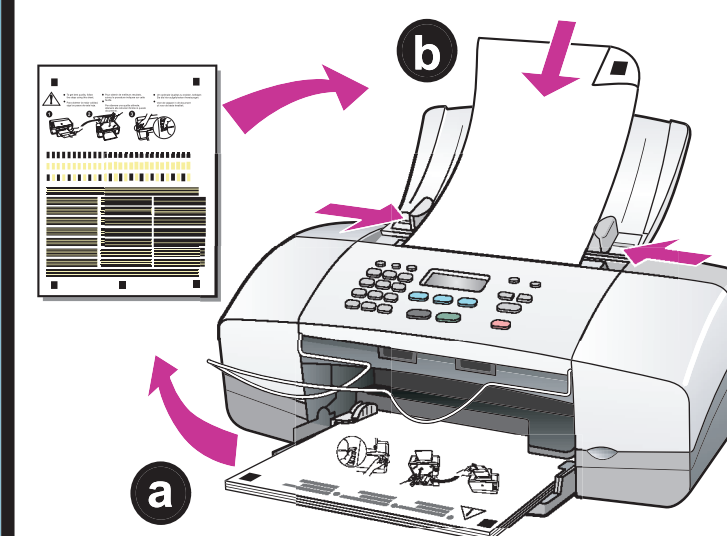
- Press firmly until the black print cartridge snaps into place.

- Repeat steps c and d with the color print cartridge. Make sure both cartridges are secure.

- Close the print cartridge door.

8

### Align print cartridges

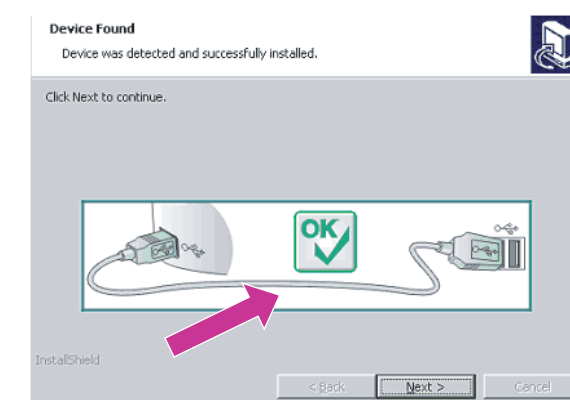


a

- Press **Enter** to print an alignment page. Follow the instructions on the page.
- Load the page face down in the feeder between the paper-width guides. Press the **Enter** button again. Discard or recycle the page.

9

### Finish software setup



Return to your computer. Look for the screen with the green checkmark, and then continue. If you see the screen with the red "X", follow the instructions in the Readme.