

Digital Tablet Device Manual

TABLE OF CONTENTS

PART A OVERVIEW	3
PART B USAGE GUIDE	4
1. Using Digital Pen	4
2. Pressure Sensitivity	6
3. Using the wireless Digital Mouse.	7
4. Compatibility with a Regular Mouse	8
PART C SETUP GUIDE	9
1. Digital Tablet Device	9
2. Using Digital Tablet Device Right Away	10
3. Installing Driver Software.....	10
4. Verifying Installation	11
5. Handy Keys.....	13
6. Roller.....	14
PART D CONFIGURATION GUIDE.....	15
1. Tablet Configuration Panel	15
2. Left hand user setting.....	17
3. Monitor Mapping	18
4. Configuring Pen Buttons.....	20
5. Adjusting Work Area.....	21
6. Configuring Hot Cells.....	23
7. Configuring Handy Keys	30
8. Configuring Roller	35
9. Testing and Configuring Pressure Sensitivity	38
10. Show Icon in System Tray	39
PART E FREQUENTLY ASKED QUESTIONS (FAQ)	40
1. General Questions	40
2. Usage Basics	42
3. Technical Support	43

LIST OF DIAGRAMS

Diagram 1 Parts of Digital Pen	4
Diagram 2 Holding Digital Pens	4
Diagram 3 Sample drawings using a pressure sensitive Digital Pen	7
Diagram 4 Wireless Digital Mouse on Digital Tablet	7
Diagram 5 Parts of Digital Tablet	9
Diagram 6 Tablet Configuration Panel	16
Diagram 7 Left Hand Mode option (Tick or Untick).....	17
Diagram 8 Monitor Mapping option with only one monitor present.....	18
Diagram 9 Tablet area mapped to both monitors	19
Diagram 10 Tablet areas mapped to Monitor 1	19
Diagram 11 Configure Pen Buttons	20
Diagram 12 Adjusting Work Area	21
Diagram 13 Distortion of graph drawn on tablet due to different aspect ratios.....	23
Diagram 14 Defining Hot Cell function	24
Diagram 15 Defining one Hot Edge on top of Work Area.....	24
Diagram 16 Selecting Run a Program as Hot Cell Function	25
Diagram 17 Selecting Internet Service as Hot Cell Function	26
Diagram 18 Selecting Setup an Email address as Hot Cell Function	27
Diagram 19 An e-mail program is called	27
Diagram 20 Specifying a Hot Key combination to invoke Hot Cell function	28
Diagram 21 Multiple Web site addresses defined	29
Diagram 22 All specified Web Sites are visited	30
Diagram 23 Handy Key Configuration Panel	31
Diagram 24 Select Add button to add a new action for a Handy Key	32
Diagram 25 Select an action for a Handy Key.....	32
Diagram 26 Defining Handy Key 3	33
Diagram 27 Attaching “Run” action to a Handy Key	34
Diagram 28 Attaching Hot Key combinations to trigger Handy Key function	35
Diagram 29 Attaching Action Pair(s) to Roller	36
Diagram 30 Defining a Handy Key for selecting the method of choosing active Action Pair	37
Diagram 31 Pressure Configuration Panel	38
Diagram 32 Changing Pen Tip.....	41
Diagram 33 Holding Digital Pens	42

Part A Overview

The Digital Pen Device, with a pressure sensitive digital pen, is suitable for applications such as handwriting/scripting, signature, drawing, and so on, and enables the user to control a personal computer in place of a mouse or other pointing device.

The features of this Digital Pen Device include:

1. Mouse functions – Digital Pen can replace a mouse in controlling the cursor on a computer screen and scrolling, with definable button functions.
2. Ergonomics – Using a pen is completely natural and can reduce the possibilities of RSI (Repetitive Strain Syndrome) such as Carpal Tunnel.
3. Handwriting– Digital Pen enables the handwriting functions provided by operating systems such as Windows Vista, Windows 7, and applications such as Office 2007, and MSN 8.5.
4. Drawing – With the capability to sense pressure applied at the pen tip (up to 2048 levels, depending on the model), Digital Pen is required to realize full functionality of professional drawing software such as Adobe Photoshop, Adobe Illustrator, CorelDraw, Corel Painter, and so on.

The following table shows applicable operating systems and a sample of compatible applications.

Operating Systems			
Driver for PC	Windows XP	Windows Vista	Windows 7
Driver for Apple	Mac OS 10.4	Mac OS 10.5	Mac OS 10.6
Software Applications			
Microsoft	Office 2000/2003/2007		
Avid	Avid DS, Avid Media Composer		
Corel	CorelDraw, Painter		
Adobe	Illustrator 10/CS/CS2/CS3		
	Photoshop CS3/CS4/CS5		

(For Digital Tablet Driver Version 6.0)

This manual consists of this Overview and these other parts:

- (1) Part B Usage Guide – A short guide to using Digital Pen Device
- (2) Part C Setup Guide– Details of the hardware and software setup of Digital Pen Device
- (3) Part D Configuration Guide – A detailed description of customizing Digital Pen Device
- (4) Part E Frequently Asked Questions (FAQ) – Answers to common questions

Part B Usage Guide

1. Using Digital Pen

Note: Always tap Digital Pen before using it. This “wakes up” the Pen, which goes to “sleep” to conserve battery power after several minutes of non-use.

Digital Pen functions as a three-button mouse, with a left button (Pen Tip), a right button (Pen Button 1), and a middle button (Pen Button 2). These parts are shown below.

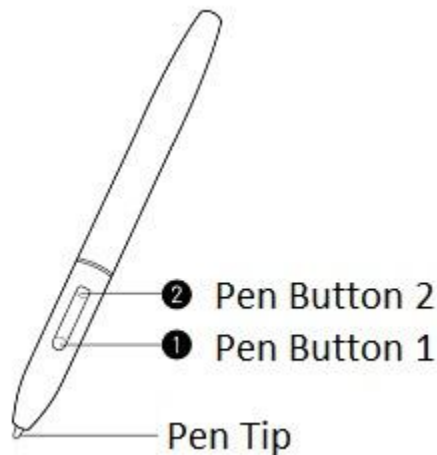


Diagram 1 Parts of Digital Pen

Note: Pen Buttons 1 and 2 may be programmed for functions other than what are described above. See Configuration Guide Section 4 Configuring Pen Buttons on page 20.

1.1 Cursor Movement

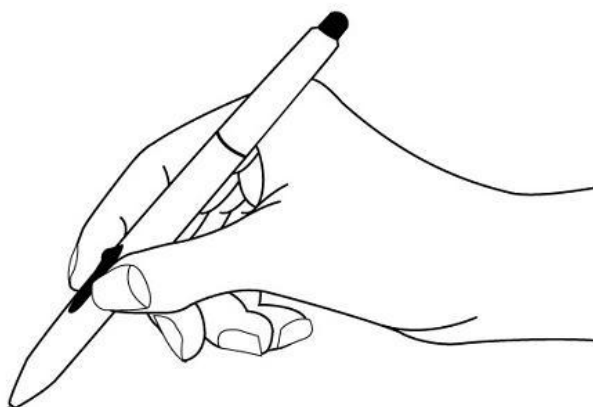


Diagram 2 Holding Digital Pens

Hold Digital Pen as you would a regular one. The Tablet senses the Pen up to 1/4" (about 5 mm) above its surface. Please do not let the Pen touch the Tablet surface when you simply want to move the cursor position.

Note: Try to keep your eye on the screen while using Digital Pen. This makes its use more "natural."

Digital Pen moves the cursor on the screen in an "absolute" way. For instance, when you put Pen Tip at the center of Work Area, the cursor will move to the center of the screen; when you put Pen tip at upper right corner of Work Area, the cursor will move to upper right corner of the screen. This gives it a different "feel" from a regular mouse and many people find it more convenient as the cursor responds to Digital Pen movement instantly.

1.2 Drag and Drop

To drag and drop,

- (1) Move the cursor to the object you wish to drag, press Pen Tip against the Tablet surface,
- (2) Move Digital Pen while keeping Pen Tip in touch with the Tablet surface to drag the object until the object is at the desired location, and
- (3) Lift Pen Tip above the Tablet surface to drop the object.

1.3 Single "Click" with Pen Tip

Touch the surface of Digital Tablet briefly with Pen Tip and lift immediately. This action, also referred to as "tapping," is equivalent to "single clicking" the left button of a regular mouse.

1.4 Double "Click" with Pen Tip

Tap the surface of Digital Tablet twice in a roll with Pen Tip, and try to tap at the same spot. This action is equivalent to "double clicking" the left button of a regular mouse.

Note: When you tap the Tablet surface the first time, make sure Pen Tip does not move while it touches the surface so as to avoid inducing a drag and drop action.

1.5 Calling up Context Menu with Pen Button 1

This is equivalent to using the right button of a regular mouse to call up context menu.

- (1) Press and hold Pen Button 1.
- (2) Without touching tablet surface, move Pen Tip so the cursor is at the desired object on the screen.


- (3) Tap the tablet surface to call up the context menu.
- (4) When the context menu shows up, move Pen Tip to move cursor to the desired action item in the menu.
- (5) Tap the selection.
- (6) Release Pen Button 1.

This action may require a little practice.

Note: The function of Pen Button 1 may be customized. See Configuration Guide Section 4 Configuring Pen Buttons on page 20.

1.6 Scrolling

To scroll pages on the screen,

- (1) Press and hold Pen Button 2 to display the Scroll Mark (),
- (2) Move Pen Tip away from the Scroll Mark and the window on the screen will scroll accordingly. Adjust the scrolling speed by changing the vertical distance between the cursor and Scroll Mark — the farther the distance, the faster.

Note: Not all application programs support this type of scrolling.

1.7 Storing Digital Pen

When Digital Pen is not in use, make sure Pen Tip does not touch anything to avoid a constant drain on the pen's battery. You may use the specially designed penholder that comes with certain models of Digital Pen Device or simply keep Digital Pen in a penholder or a cup with Pen Tip pointing upward. When storing Digital Pen in a drawer, avoid movements of Digital Pen that may cause pressure on Pen Tip.

2. Pressure Sensitivity

When you draw something with a marker, the line becomes thicker and the color may get darker when you press harder. Similarly, when you draw with Digital Pen on Digital Tablet, the Tablet senses the pressure you apply and sends that information to the application controlling Digital Tablet. The application program can then use this pressure information to simulate various effects of soft tip pens such as a marker. This is known as *Pressure Sensitivity* function.

It is important to know that pressure sensitivity requires the support of an application program. For a program that supports pressure sensitivity, such as Photoshop, this feature may sometimes be inadvertently turned off.

When in doubt, use Tablet Configuration Panel (see page 39) to verify the presence of pressure sensitivity function. Depending on your model, the reported pressure may be up to 2048 levels. The following diagram shows some sample drawing.



Diagram 3 Sample drawings using a pressure sensitive Digital Pen

3. Using the wireless Digital Mouse.

Digital Mouse functions as a regular two-button mouse with a scroll roller in the middle, as long as Digital Mouse is kept within Active Area. The following diagram shows a Digital Mouse sitting on Digital Tablet.

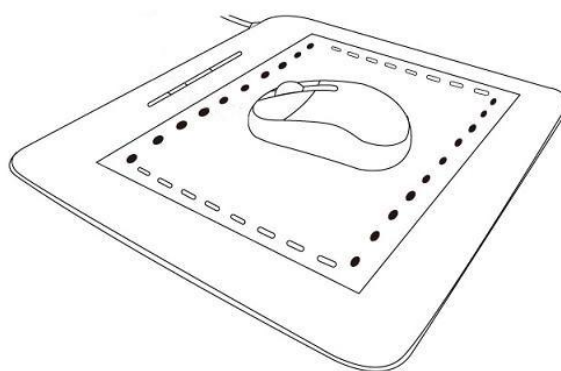


Diagram 4 Wireless Digital Mouse on Digital Tablet

The use of Digital Mouse is similar to that of a regular mouse:

- (1) Move the mouse to a certain direction to move the cursor on the screen in corresponding direction.
- (2) Pick up the mouse and put it down at the beginning position, in order to move the cursor further in the same direction.
- (3) Click the left button to select the object currently under the cursor.
- (4) Double click the left button to open the object currently under the cursor.
- (5) Click the right button to call up the Context Menu.
- (6) Move the scroll roller to scroll the current window.

Note: Always click the left button to “wake up” Digital Mouse before using.

Note: Please do not use a regular mouse on Digital Tablet to avoid scratching the Tablet surface and other possible problems.

4. Compatibility with a Regular Mouse

Having another mouse on the same computer normally does not interfere with Digital Tablet Pen, nor does it with Digital Mouse. You may switch to Digital Pen, to Digital Mouse, or to a regular mouse at any time. However, avoid using more than one device at the same time. This may confuse the system and cause undesirable effects.

Note: While using a regular mouse or Digital Mouse, please keep Pen Tip out of Work Area. Digital Pen kept within Work Area will attempt to put the cursor to a specific position on the screen as soon as you release the mouse.

Part C Setup Guide

1. Digital Tablet Device

1.1 Package Content

A Digital Tablet Device package consists of the following parts:

- (1) Digital Tablet
- (2) Digital Pen
- (3) Extra Pen Tip for replacement
- (4) Pen Tip pullout tool (a small ring-like device for replacing Pen Tip, or a special cavity built in to the back of the Tablet)
- (5) Driver CD - contains driver software for PC and Mac plus an electronic version of this manual.
- (6) Warranty card
- (7) Digital Mouse – an optional wireless mouse (Depending on Module)

1.2 System Requirements

- (1) Pentium III equivalent PC or Higher Version, with Microsoft Windows XP, Vista or Windows 7
- (2) Apple Mac with Mac OS 10.4, 10.5, or 10.6.

1.3 Parts Diagrams

The following diagram shows the parts of Digital Tablet.

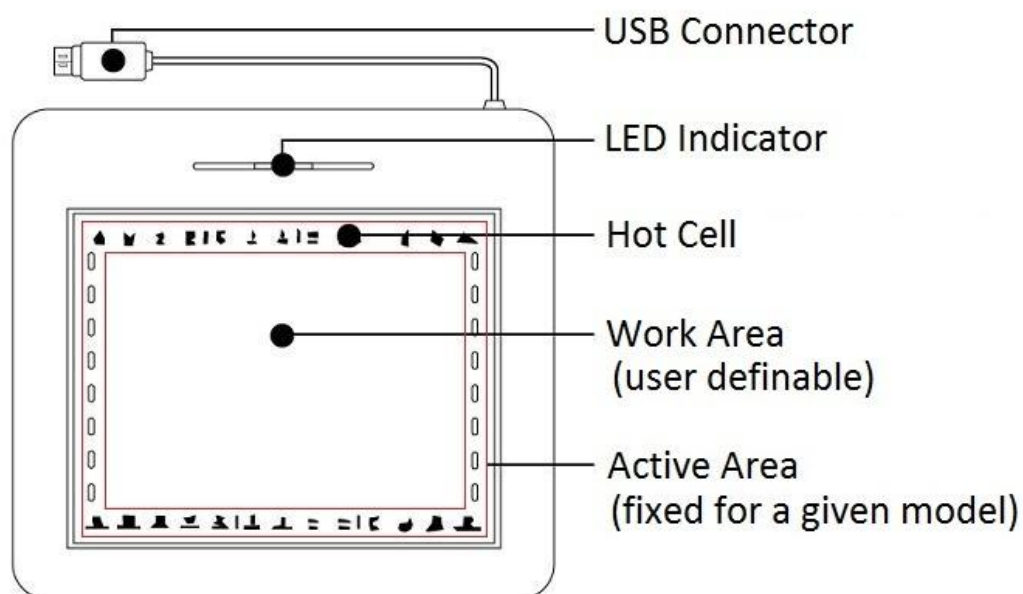


Diagram 5 Parts of Digital Tablet

2. Using Digital Tablet Device Right Away

You may start using Digital Tablet Device after you insert USB Connector of Digital Tablet into an available USB port. You may control the cursor position using either Digital Pen or Digital Mouse. Driver Software need not be installed to control cursor position with either device.

Note: For best performance, please plug the USB Connector directly into a USB port of your PC or Notebook instead of a USB Hub or other exterior USB port device.

Hovering Digital Pen over Work Area moves the cursor on the screen, and the position of the cursor relative to the screen is the same as the position of Pen Tip relative to Work Area. For example, when Pen Tip is at the center of Work Area, the cursor will be at the center of the screen.

Moving the optional Digital Mouse within Active Area will also move the cursor on the screen in the same way as a regular mouse does. That is, the cursor moves on the screen in the same direction corresponding to what Digital Mouse does within Active Area, and then you may pick up the Mouse and put it back down to move the cursor further on the screen.

To configure Digital Tablet, you need to install Driver Software. Pressure sensitivity also requires that Driver Software be installed.

Note: Always tap Digital Pen before you use Digital Tablet to “wake up” the Pen.

3. Installing Driver Software

To enjoy all features of Digital Pen Device, Driver Software must be installed. This section describes the installation procedure of Driver Software. See Setup Guide Section 2 Using Digital Tablet Device Right Away on page 10 for a description of the features of Digital Pen Device without installing Driver Software.

Note: 1. Before the installation, please make sure all other brand's driver has been uninstalled clearly

2. Please temporarily turn off the antivirus software during the installation

3. After installation, please follow the instructions message for reboot or not reboot the systems

3.1 Step 1: start the setup program

To install Driver Software, insert Driver CD into a CD-ROM drive, and wait for the installation menu to show up on the screen. Or, you may start the setup program on the CD to show the installation menu by selecting:

[My Computer] ► [CD/DVD ROM] ► (double click) [Setup.exe]

3.2 Step 2: Go through the setup steps


Press Enter Key on the installation menu and you may press enter Key on all subsequent menus until the program ends. Or, you may make selections according to the instructions on the screen.

3.3 Step 3: Connect Digital Tablet

To connect Digital Tablet, insert USB connector to any free USB port on your computer. For best results, we recommend against using a USB hub or an USB port on an exterior device.

3.4 Step 4: Restart the computer

Restarting the computer completes the installation.

Note: If you do not see Tablet Icon () in System Tray, you know that Driver Software has not been installed unless the Tablet has been disconnected, or you have turned off this icon explicitly using Tablet Configuration Panel.

Note: Please remove other Graphic Tablet's Driver before install Pen Tablet Driver, avoid for any possible conflicts.

Note: To use Digital Pen for mouse functions, you don't need to install Driver Software.

Note: To draw without pressure sensitivity, you do not need to install Driver Software neither.

4. Verifying Installation

Follow the procedure below to verify that installation is successful, or whenever you wish to confirm the proper functioning of Digital Pen Device. Please watch LED Indicator closely as you test the functions of the Device.

4.1 Digital Tablet Startup

Right after you connect Digital Tablet to the computer, LED Indicator will blink quickly for a short period. Also, when you power up the computer with Digital Tablet already connected, LED indicator will blink quickly for a short period. When blinking stops, this indicates that Digital Tablet has started up normally and is ready to serve you.

In both situations, if LED Indicator does not blink, this indicates either a bad USB connection or a hardware problem with Digital Tablet. It is also possible, though unusual, that the LED light is broken. In this last case, Digital Tablet may continue to function.

4.2 Digital Pen in Use

You must tap Digital Pen Tip before you use Digital Pen, because it goes to “sleep” after several minutes of non-use to conserve battery power and pressing Pen Tip “wakes” it up.

When you hover Digital Pen over Active Area, LED Indicator will blink slowly. This indicates that Digital Tablet has detected Digital Pen. Blinking stops as soon as Pen Tip moves out of Active Area or is lifted up too high (more than about 1/4” or 5mm).

If LED Indicator does not blink when Digital Pen hovers over Active Area, the most likely cause is a weak battery in Digital Pen. Simply replace the battery and try again. Other possible causes are: malfunctioning Digital Pen or Digital Tablet. Try to find a good Digital Pen or good Digital Tablet and try again, or seek help from the store you obtained your Digital Pen Device from.

When Digital Pen is detected, moving Digital Pen around within Work Area will move the cursor on the screen correspondingly.

<p>Note: Please distinguish Work Area from Active Area. The size and shape of Active Area is fixed for a given model of Digital Tablet, while Work Area is a rectangular area within Active Area and its size and position can be customized by a user through Tablet Configuration Panel (See Configuration Guide Section 5 Adjusting Work Area on page 21).</p>

When Pen Tip touches the Tablet surface within Active Area, LED Indicator will stay lit until Pen Tip is released. In this case, the lit LED indicates that Digital Pen is detected and that Pen Tip (or one of the buttons) is being pressed.

When you press one of the Pen Buttons on the body of Digital Pen while Digital Pen is detected, LED Indicator will also light up continuously until you release the Button.


4.3 Digital Mouse in Use

You must click (press and release immediately) the left button of Digital Mouse before you use Digital Mouse, as it goes to “sleep” after several minutes of non-use to conserve battery power and clicking the left button “wakes” it up.

When Digital Mouse is put on Digital Tablet within Active Area, LED Indicator blinks slowly until the Mouse leaves Active Area. This indicates that the Mouse is detected by the Tablet.

When you press any one of the Mouse buttons, LED Indicator will light up until you release the button. Moving Digital Mouse around within Active Area will cause the cursor on the screen to move the same way the cursor responds to a regular mouse.

4.4 Verifying Driver Software installation

After Driver Software is installed successfully, Tablet Icon () will show up in System Tray, which normally sits at the lower right corner of the screen. Clicking this icon calls up Tablet Configuration Panel as described in Configuration Guide on page 15. Note that this icon may be set to non-display with Tablet Configuration Panel (see page 15), and the position of System Tray may also be changed through system settings.

4.5 Verifying Pressure Sensitivity

Digital Tablet Device is pressure sensitive, and provides pressure information to an application program, which may use this information to simulate various soft tip pens when drawing or writing. This refers to the pressure applied at Pen Tip. Using Tablet Configuration Panel, you may confirm the pressure sensitivity function of your Digital Tablet Device. See section 9 Testing and Configuring Pressure Sensitivity in Configuration Guide on page 37 for instructions.

5. Handy Keys

When you press one of Handy Keys with your finger, a pre-defined function will be performed. The function may be a single action such as running a program or visiting a web site. The function may also consist of a series of actions, such as opening several web pages that you visit often as a group, or print and followed by save. As in defining Hot Cell functions, you may also specify a key combination to call out the same function as defined for this Handy Key. A special function of Handy Key is to assist with the use of Roller. See Section 6 Roller.

Note: Both Handy Key and Hot Cell are used to quickly call out pre-defined function. Handy Keys are hardware keys built into Digital Tablet next to Active Area and their functions are triggered by pressing with a finger; Hot Cells are rectangular areas located within Active Area surrounding Work Area and their functions are triggered by tapping with Digital Pen.

6. Roller

Roller can be defined to perform continuous functions such as scroll up/scroll down in viewing and volume up/volume down in playing music. If more than one function is attached to Roller, you will need to define one of the Handy Keys to select among these Roller functions.


Part D Configuration Guide

This guide is for advanced users both to customize Digital Pen Device to realize full benefits and to diagnose problems.

1. Tablet Configuration Panel

1.1 Calling up Tablet Configuration Panel

The first step to customize or to diagnose Digital Pen Device is to call up Tablet Configuration Panel. There are two ways to do so.

(1) Tap on Tablet Icon () at the lower right corner of the screen.

(2) Start the configuration program manually:

For Windows XP,

[Start] ► [Control Panel] ► [Other Control Panel Options] ► [Tablet Setting]

For Windows Vista or Windows 7

[Start] ► [Control Panel] ► [Tablet Setting]

1.2 Configuration Options

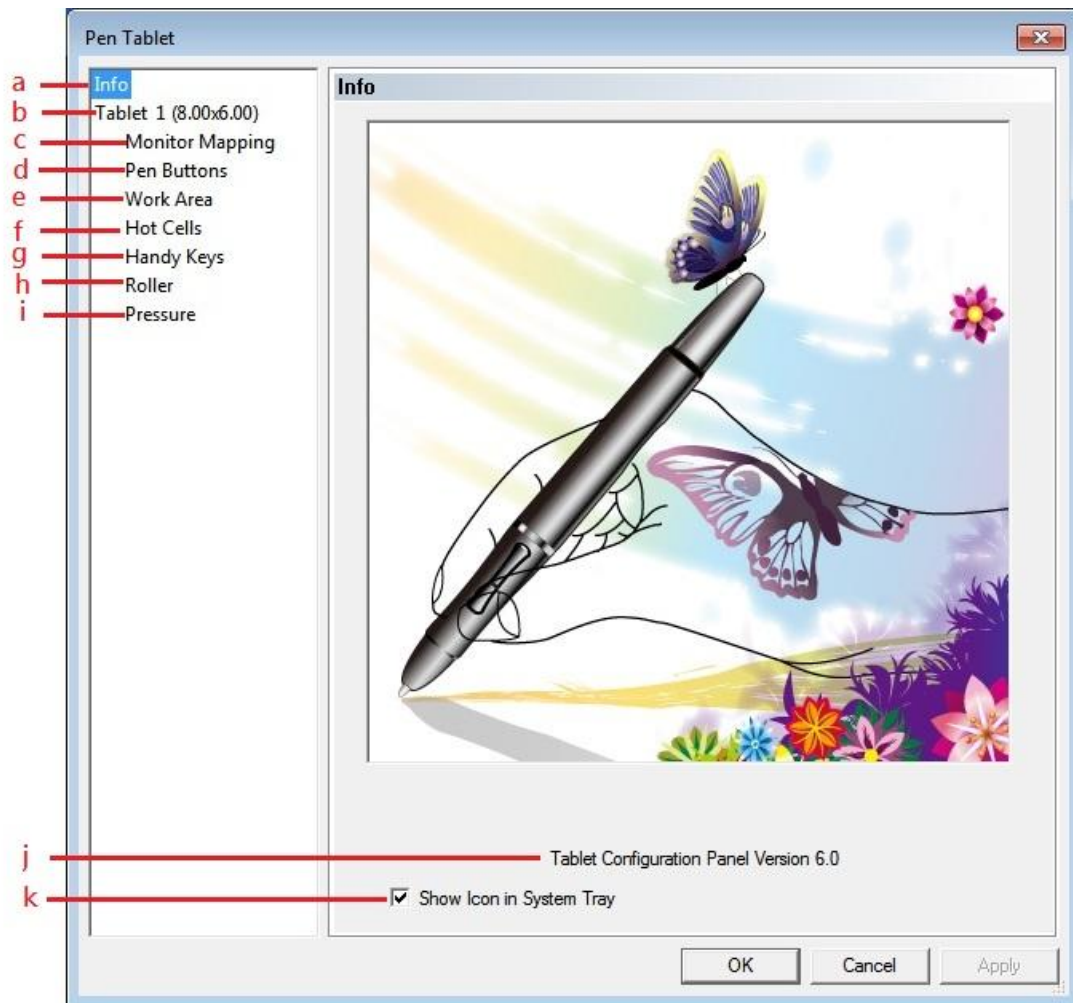


Diagram 6 Tablet Configuration Panel

Tablet Configuration Panel displays Active Area size, version number of the current Tablet Configuration Panel, and all configuration options of Digital Tablet.

- a. Info – on other configuration pages, tap this to return to this page
- b. Tablet 1 (8.00×6.00) – displays width and height of Active Area in inches and set up for Left-handed User
- c. Monitor Mapping – tap to map Active Area to a part or all of monitor screen
- d. Pen Buttons – tap to customize the functions of Pen Buttons
- e. Work Area – tap to adjust the size and position of Work Area within Active Area
- f. Hot Cells – tap to define the functions of Hot Cells
- g. Handy Keys – tap to define actions of Handy Keys
- h. Roller – tap to define action of Roller
- i. Pressure – tap to customize and test the pressure sensitivity feature
- j. Tablet Configuration Panel Version ... – information about the driver version
- k. Show Icon in System Tray – select to display or hide Tablet Icon in System Tray

These options are described in sections that follow.

2. Left hand user setting

For setting up for “Left hand user” mode, please go to “Tablet 1(8.00X6.00)” of the Tablet Configuration Panel and Tick the box of “LEFT HAND” as diagram show below.

Note: After changing to the “Left hand” mode, the pen table use direction will upside down from the Right hand mode and the way of settings will automatically be applied.

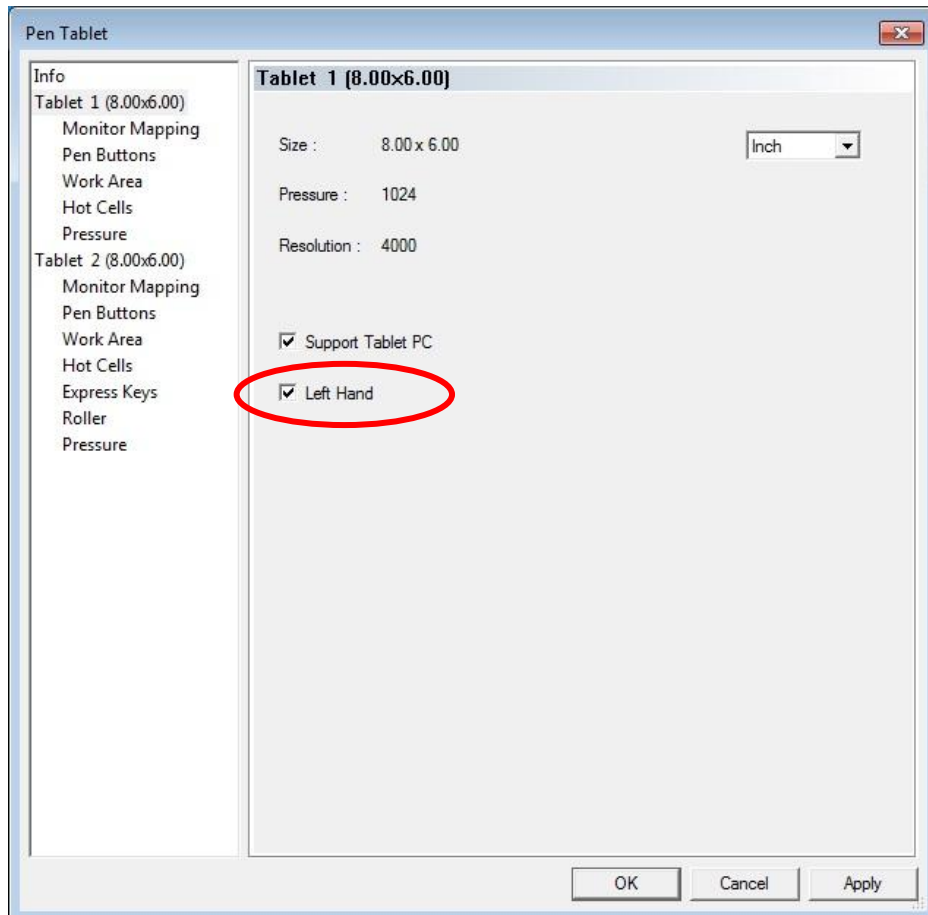


Diagram 7 Left Hand Mode option (Tick or Unpick)

3. Monitor Mapping

Monitor Mapping option (label **c** in Diagram 6) allows you, when you have two monitors, to map the tablet either to both monitors or just one of them.

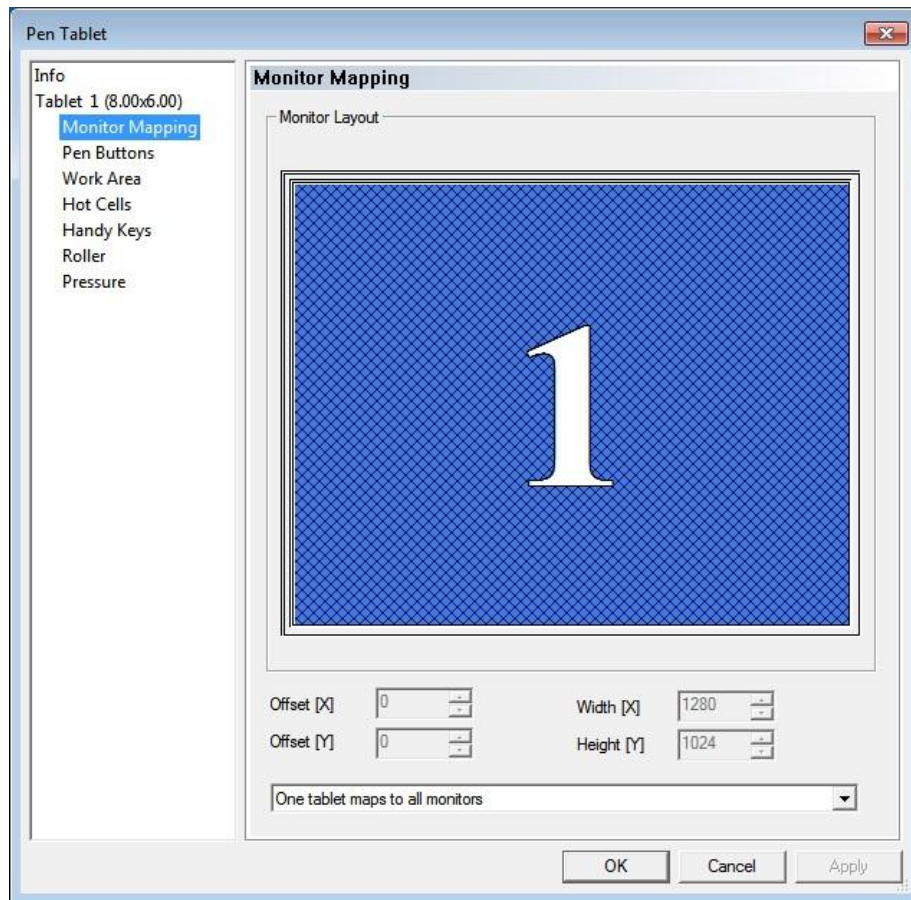


Diagram 8 Monitor Mapping option with only one monitor present

The diagram below shows, with two monitors present, the tablet is mapped to both monitors, such that when you move Digital Pen across the entire Work Area, the cursor will move from one monitor to another. It is possible to move the cursor to any place on both monitor.

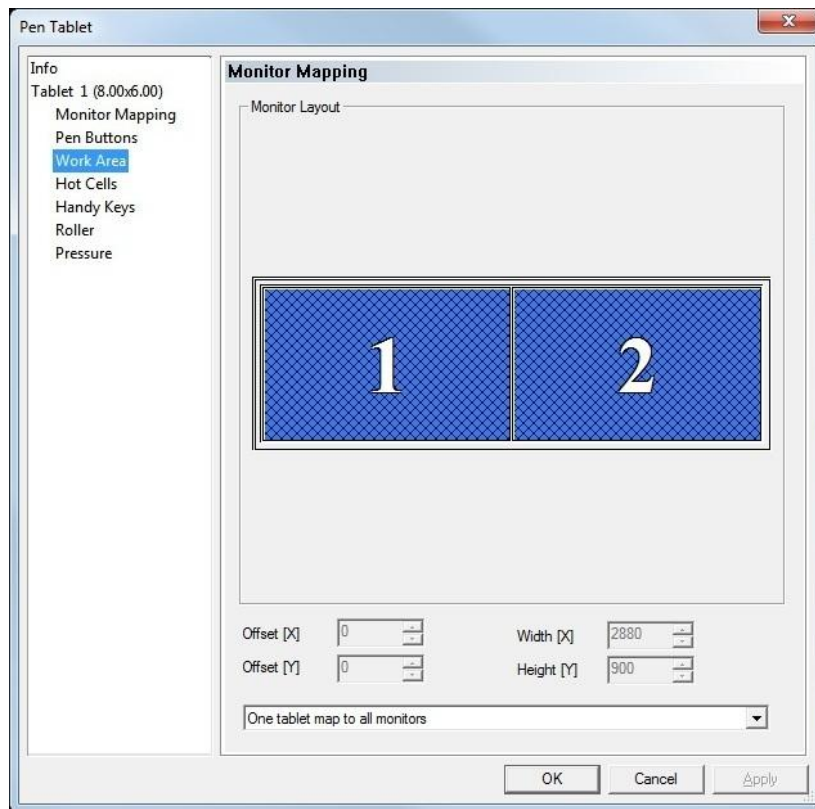


Diagram 9 Tablet area mapped to both monitors

The following Diagram shows the case when the tablet is mapped to Monitor 1. In this case, move Digital Pen across Work Area will move the cursor across Monitor 1 only, and will never reach Monitor 2.

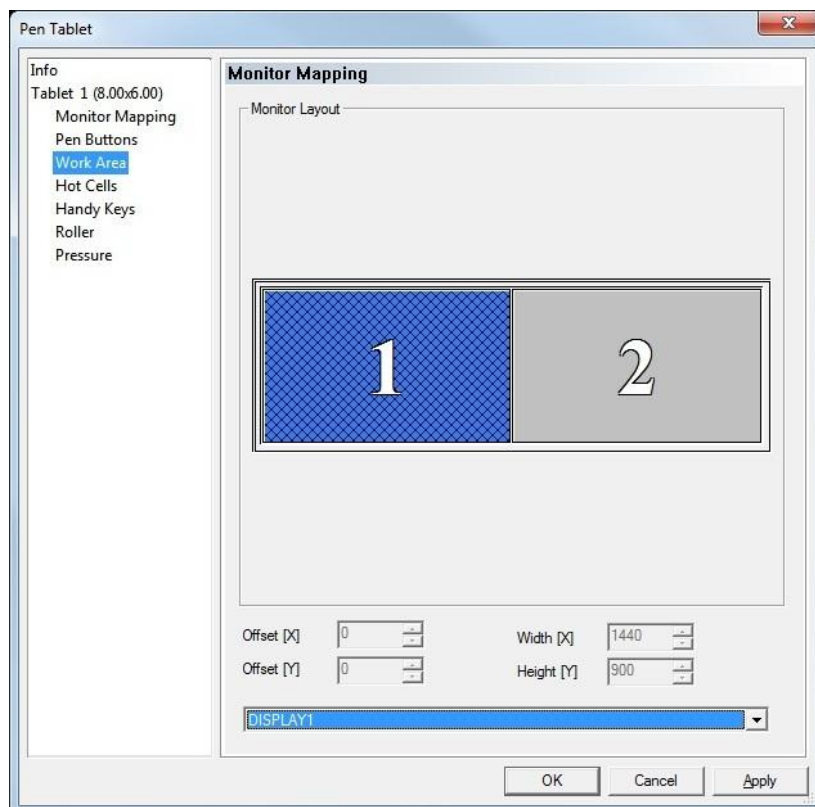


Diagram 10 Tablet areas mapped to Monitor 1

4. Configuring Pen Buttons

Pen Buttons option (label **d** in Diagram 6) allows you to customize the functions of Pen Buttons.

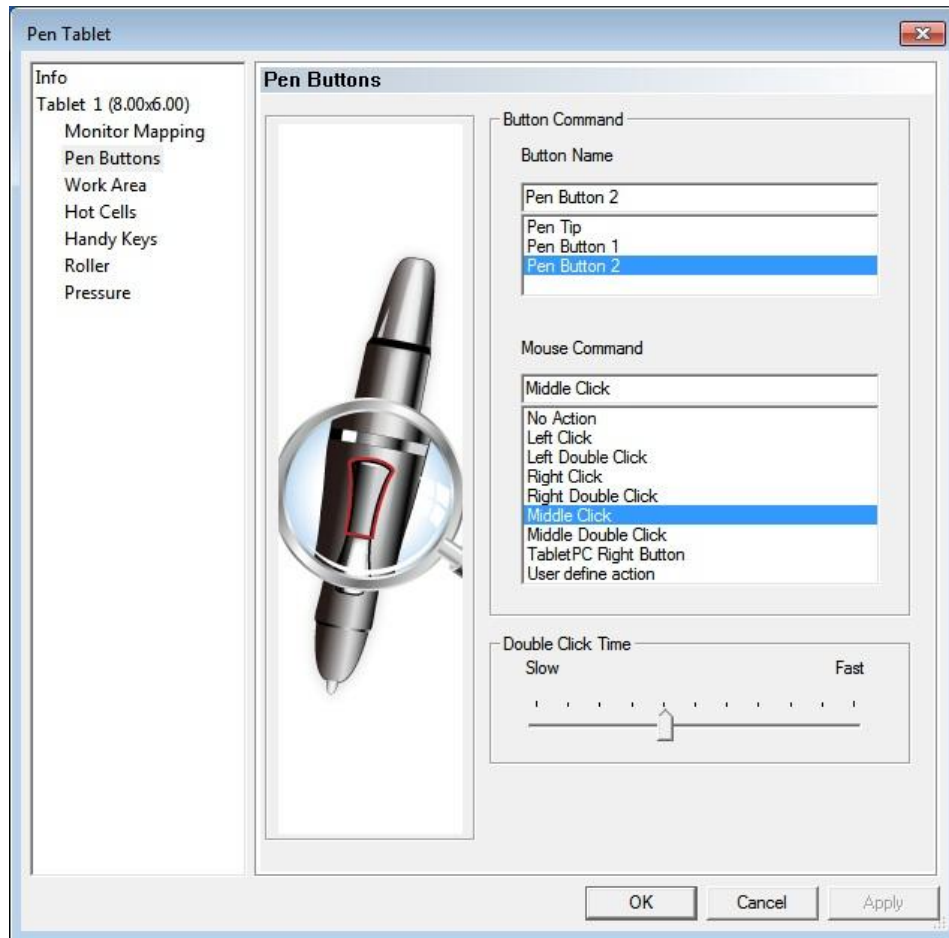


Diagram 11 Configure Pen Buttons

4.1 Configuring Pen Buttons

You program Pen Buttons to different mouse commands by

- (1) Selecting a button in Button Name area, and
- (2) Selecting a mouse command from the pull down list in Mouse Command area.

After configuration, pressing the specified button will cause it to perform the designated mouse command.

Note: Pen Tip may only be defined to function as the left mouse button.

4.2 Double Click Time

To allow more time to tap the second time after the first, move the slider bar in Double Click Time Area toward "Slow."

Note: Changing Double Click Time will simultaneously change this time for Digital Mouse as well as the two Pen Buttons.

5. Adjusting Work Area

5.1 Work Area

Work Area option (label **e** in Diagram 6) this part of the Panel shows Work Area and Hot Cells surrounding it. To adjust the size of Work Area, select Work Area by tapping it and dragging one of the “handles” (small squares). To adjust the position, drag Work Area to desired position.

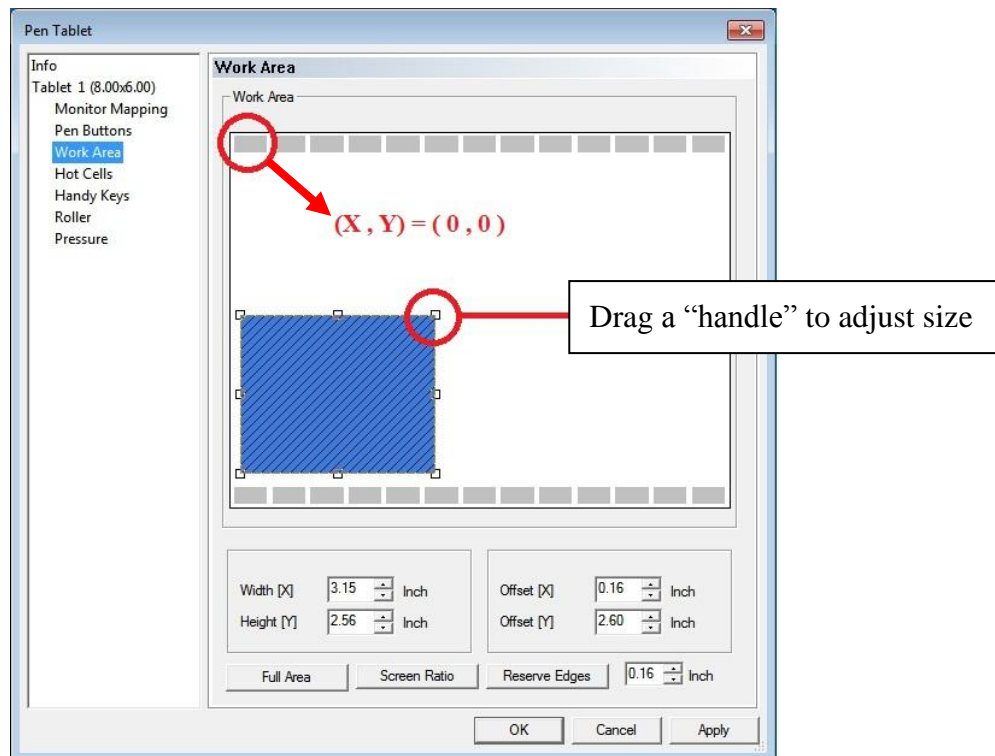


Diagram 12 Adjusting Work Area

Active Area is the area of Digital Tablet within which Digital Pen can be detected. Work Area is an area within Active Area, where Digital Pen can control the cursor on the computer screen.

If you reduce the size of Work Area, small movements of Digital Pen would move the cursor a proportionally long distance. This may be preferred when working with a large Digital Tablet.

5.2 Work Area Dimensions

This part of the Panel shows the dimensions of Work Area in real time as you adjust Work Area. You may also set the numerical values of these dimensions, and the effects will be reflected graphically in real time also.

5.3 Work Area Offset

This part of Panel shows the position of the upper left corner of Work Area relative to the upper left corner of Active Area minus areas reserved for Hot Cells. *Offset [X]* indicates the horizontal distance; *Offset [Y]* indicates the vertical distance. You may also set the numerical values of these offsets, and the effects will be reflected graphically in real time.

5.4 Full Area

To obtain the largest possible Work Area, tap Full Area button. Many users would tap Screen Ratio button right after this.

When the aspect ratio of resulting Work Area is different from that of the computer screen, tapping Full Area without Screen Ratio may not be desirable. Drawing a perfect circle, for instance, on the Tablet might result in an eclipse on the screen. See Diagram 13 Distortion of graph drawn on tablet due to different aspect ratios on page 23.

5.5 Screen Ratio

The Screen Ratio button is used to address a special problem, namely the distortion on the computer screen from what is drawn on the Tablet. Tapping this button automatically eliminates such distortion by adjusting the width or height of Work Area to have the same aspect ratio as that of the computer screen.

Note: We recommend that you tap Screen Ratio button every time you change the size or shape of Work Area

When the aspect ratio of Work Area is different from that of the computer screen, distortion results, as shown in the left of Diagram 13. No such distortion exists when the aspect ratios are the same, as shown in the right.

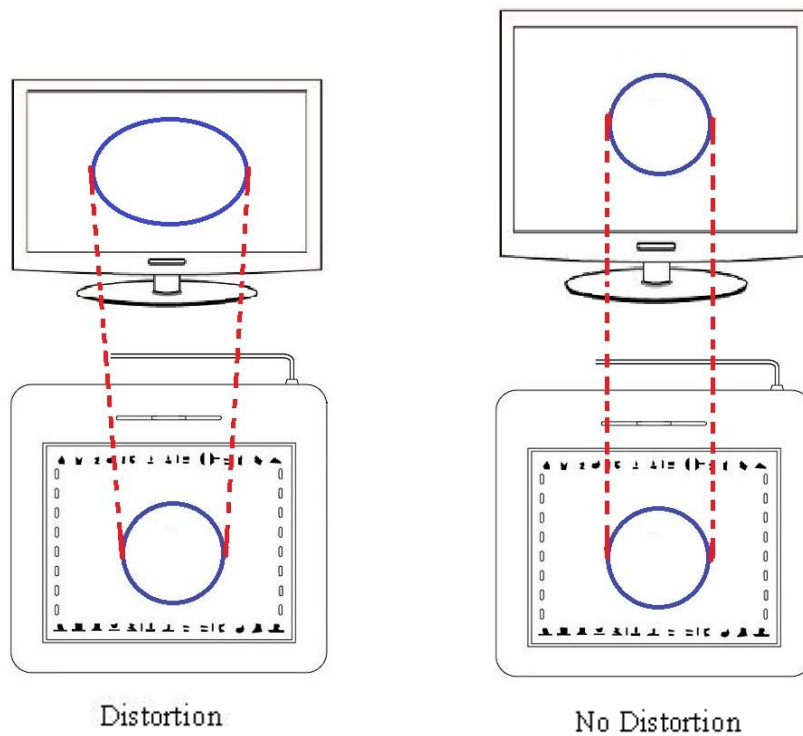


Diagram 13 Distortion of graph drawn on tablet due to different aspect ratios

5.6 Reserving Edges

Tap Reserve Edges button in order to allocate space on the edges for Hot Cells. This would reduce the size of Work Area.

6. Configuring Hot Cells

Hot Cells are small rectangular areas on the edges of Active Area on Digital Tablet. When you tap on one of these cells, a pre-defined function is executed, if one is defined. You may define these functions as you wish, such as visiting a web site, starting a word processor, playing a video clip, and so on. There may be functions already defined for some of the Cells with names printed on the protective cover of the Tablet.

The function of a Hot Cell is defined by tapping Hot Cells button on Tablet Configuration Panel (see page 16) and using Hot Cells Configuration Panel (see Diagram 14 Defining Hot Cell function below).

6.1 Hot Pad Layout

Hot Pad Layout Area on Hot Cells Configuration Panel shows the physical layout of Hot Cells, and is also used to give a name to each Hot Cell. You use this name to remind yourself of the function defined.

To name a Cell, select the Cell and type name in the space shown as shown below.

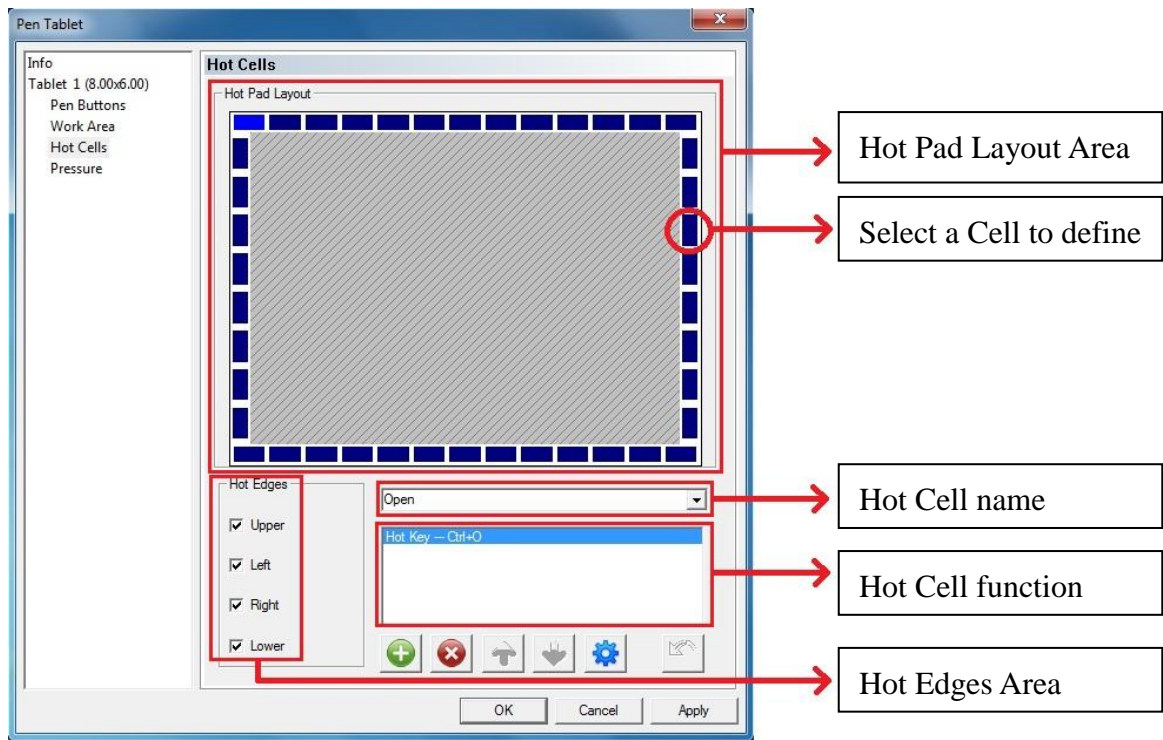


Diagram 14 Defining Hot Cell function

6.2 Hot Edges

You may individually turn off and on each of the four edges for Hot Cells in Hot Edges Area. In fact, in order to maximize the Work Area for drawing purposes, many users like to define no Hot Edge, or define one Hot Edge on top. See diagram below.

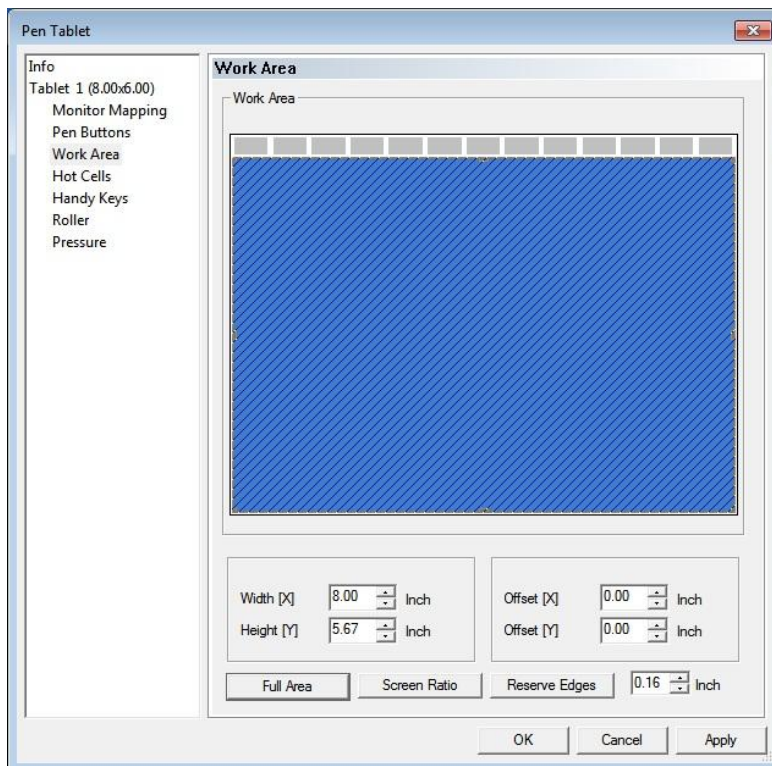


Diagram 15 Defining one Hot Edge on top of Work Area

6.3 Defining Hot Cell function (+)

To define the function for a Hot Cell, first select the Hot Cell in Hot Pad Layout Area, and then tap the green plus button (+). At this point, Hot Cell Function Panel will pop up. You may

- (1) Select Run tab to define a program to be executed,
- (2) Select Internet tab to specify a web site to be visited or another Internet service, or
- (3) Select Hot Key tab to specify a combination of keys (Hot Key combination) to invoke the same function.

The specified function is either a program to be executed or an Internet service, depending on which one is defined.

When you tap the associated Hot Cell on the Tablet with Digital Pen, the specified function will be executed. This same function may also be invoked by pressing the optional Hot Key combination.

6.3.1 Running a Program

The following diagram shows the Run tab, where you select the program to run by tapping the browse button (📁), and the folder to start the program in, with optional parameters.

For example, to specify a video clip to be played upon tapping a certain Hot Cell, first select the video playing program, and type or paste in “Start in” the directory where the video is located, and type or paste in Parameters the name of the video clip.

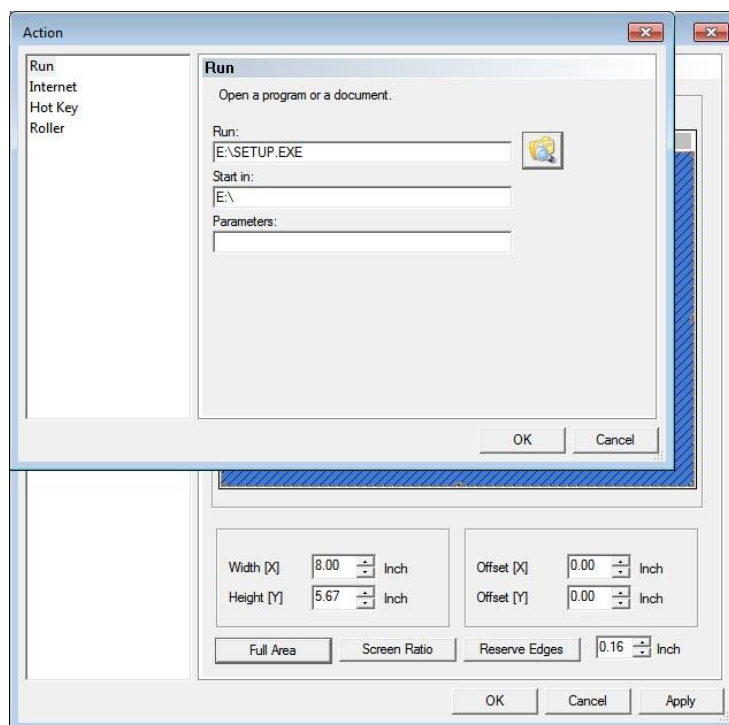


Diagram 16 Selecting Run a Program as Hot Cell Function

6.3.2 Internet service

Selecting Internet tab allows you to select one of the Internet services as the function of the selected Hot Cell. Under Kind of Services, you may select

- (1) Go to a Web site – to visit a specified Web address (such as *http://www.abc.com/*) with the default browser.

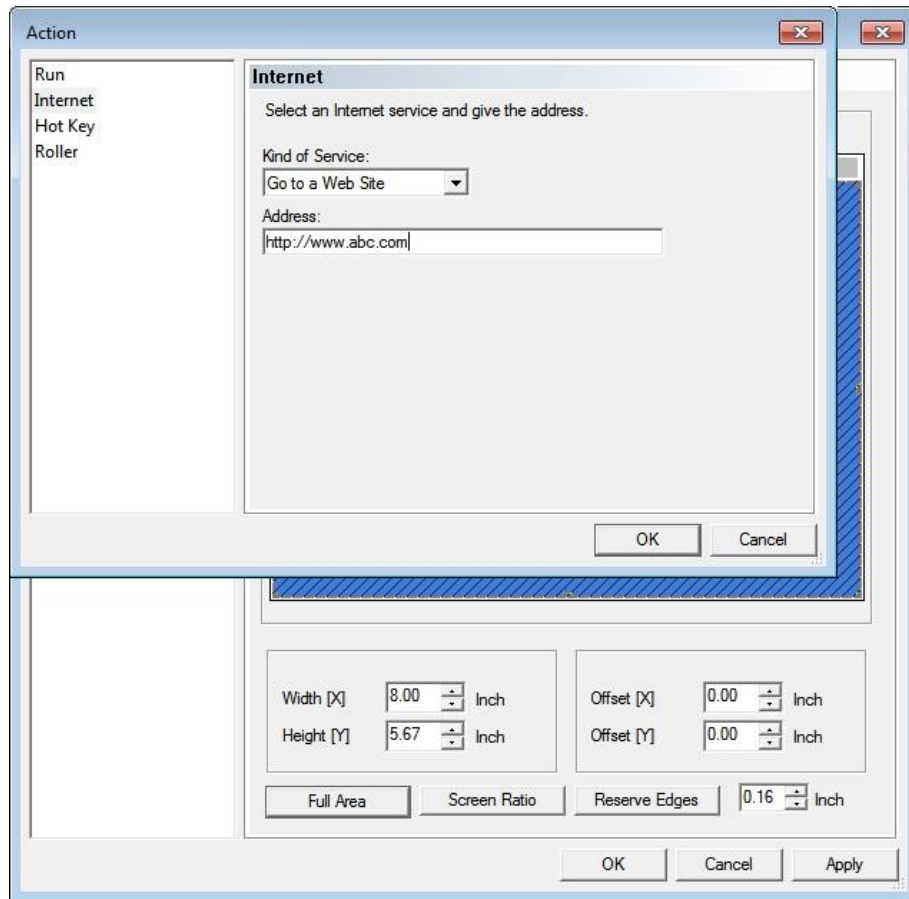


Diagram 17 Selecting Internet Service as Hot Cell Function

- (2) Set up an Email address – to send e-mail to a specified e-mail address, such as *mailto:info@abc.com* (see Diagram 18). After this is defined, tapping this Hot Cell will call the default e-mail program to let you work with it (see Diagram 19).

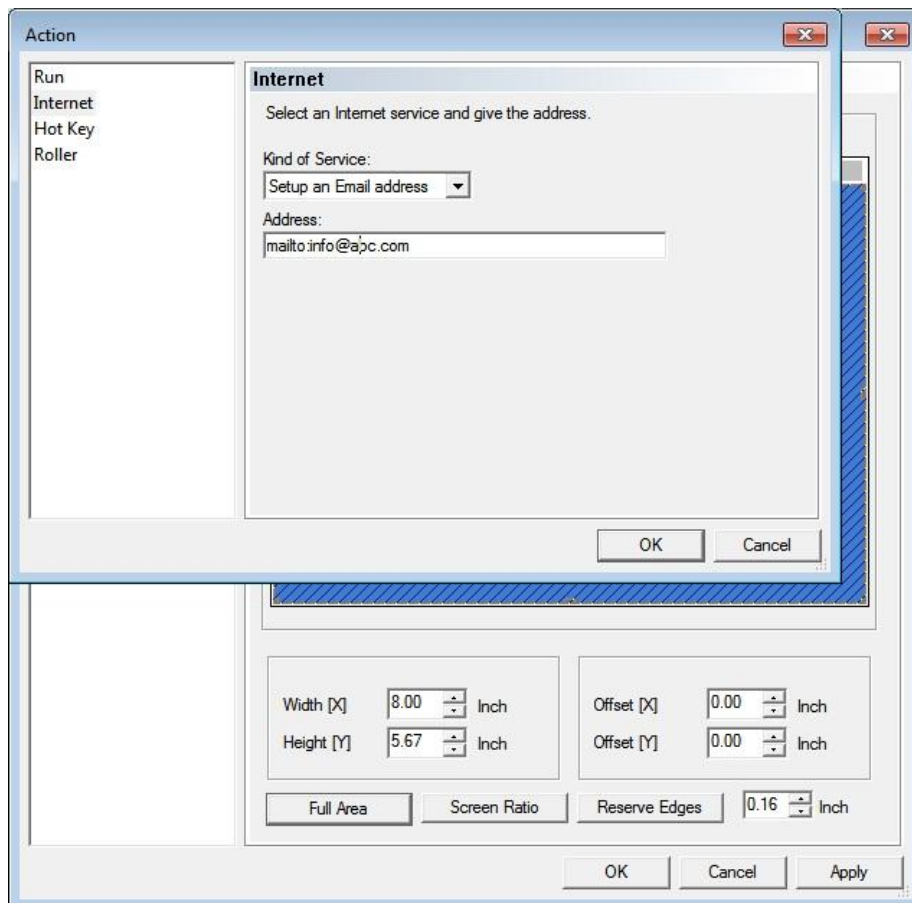


Diagram 18 Selecting Setup an Email address as Hot Cell Function

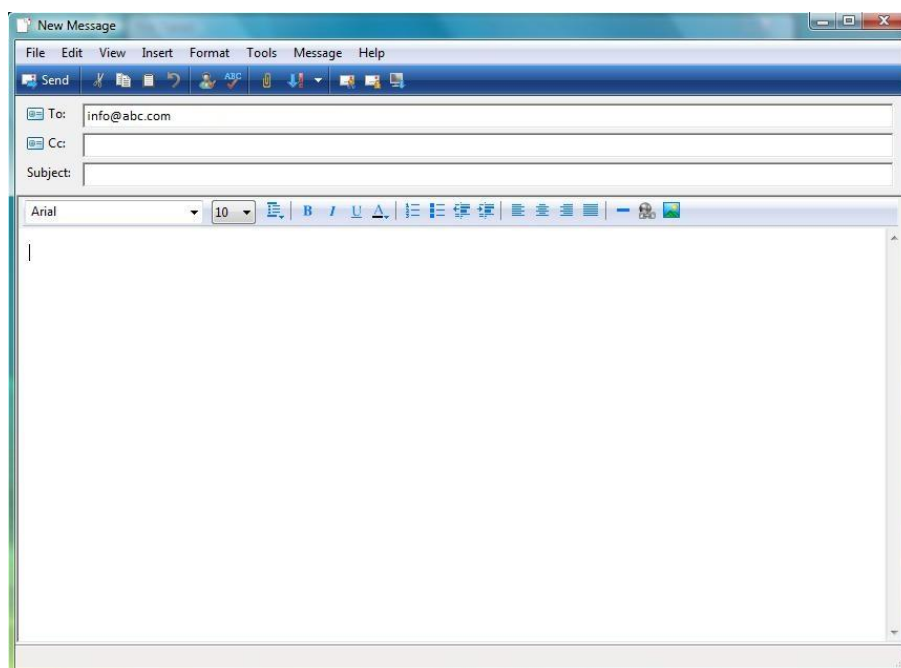


Diagram 19 An e-mail program is called

- (3) Go to a Newsgroup – to visit a specified newsgroup (such as [news://.....](#)).
- (4) Other Internet Service – to perform some other Internet service such as [ftp://ftp.abc.com](#). You define the service by entering an appropriate URL.

6.3.3 Specifying Hot Key combination

The Hot Key tab on Hot Cell Function Panel lets you specify a key combination (such as Ctrl-Alt-a) to invoke the function defined for the selected Hot Cell. All the keys specified in the key combination must be simultaneously pressed and released to invoke the Hot Cell function.

The key combination may be any basic key combined with any one or two or three of Shift, Ctrl, and ALT keys. The basic key must be selected from the pull down list, and may be any alphanumeric key, a cursor control key (left, right, up, or down arrow), or one of many other keys on the keyboard.

In defining key combination, no distinction is made between left and right Shift, Ctrl, or ALT keys.

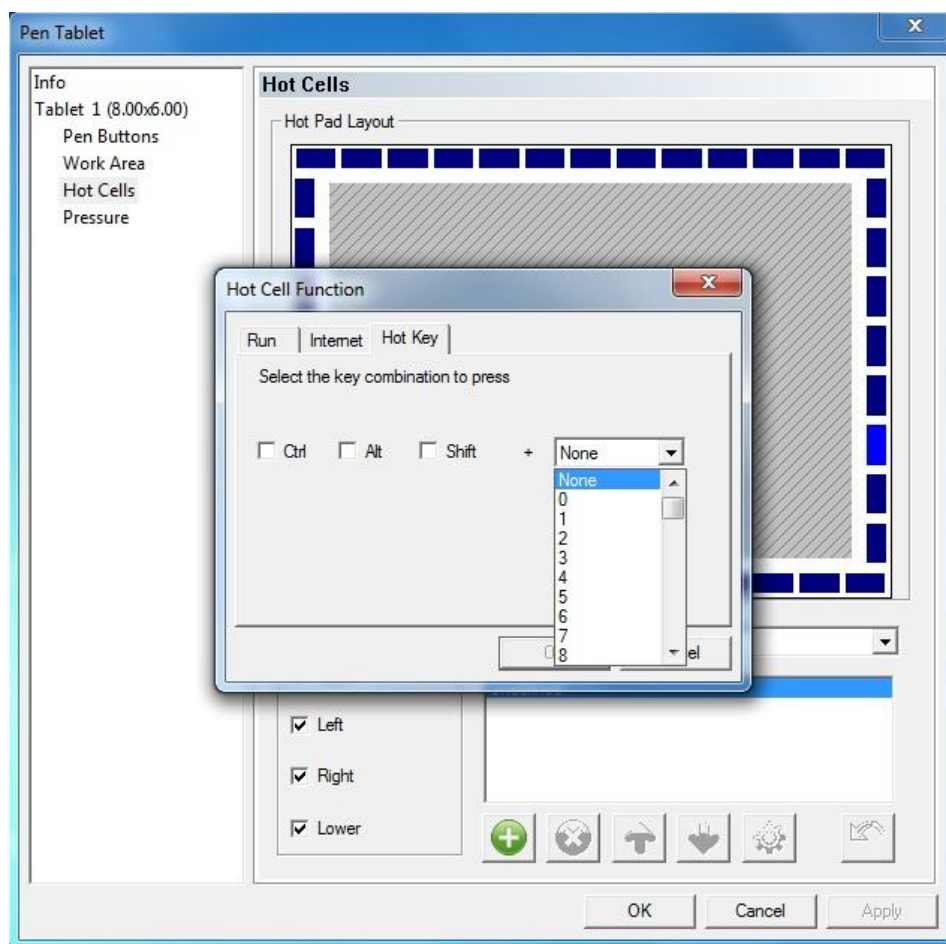


Diagram 20 Specifying a Hot Key combination to invoke Hot Cell function

6.4 Clear (✖)

Tapping (✖) button on Hot Cells Tablet Configuration Panel clears the function previously defined for the selected Hot Cell. After such clearing, no function will be performed when the selected Hot Cell is tapped, but the specified name and Hot Key combination, if any, remain unchanged.

6.5 Sorting up (↑) and sorting down (↓)

You may assign more than one Web site address to a Hot Cell, and change the order or execution as you like by tapping sort up (↑) and sort down (↓) button. When you do, tapping this Hot Cell will open up all defined addresses in the default browser as tabs in the order you define them.

For example, you may assign three Web site addresses to a Hot Cell (see Diagram 21). After that, when you tap the Hot Cell, all three sites will be opened (see Diagram 22).

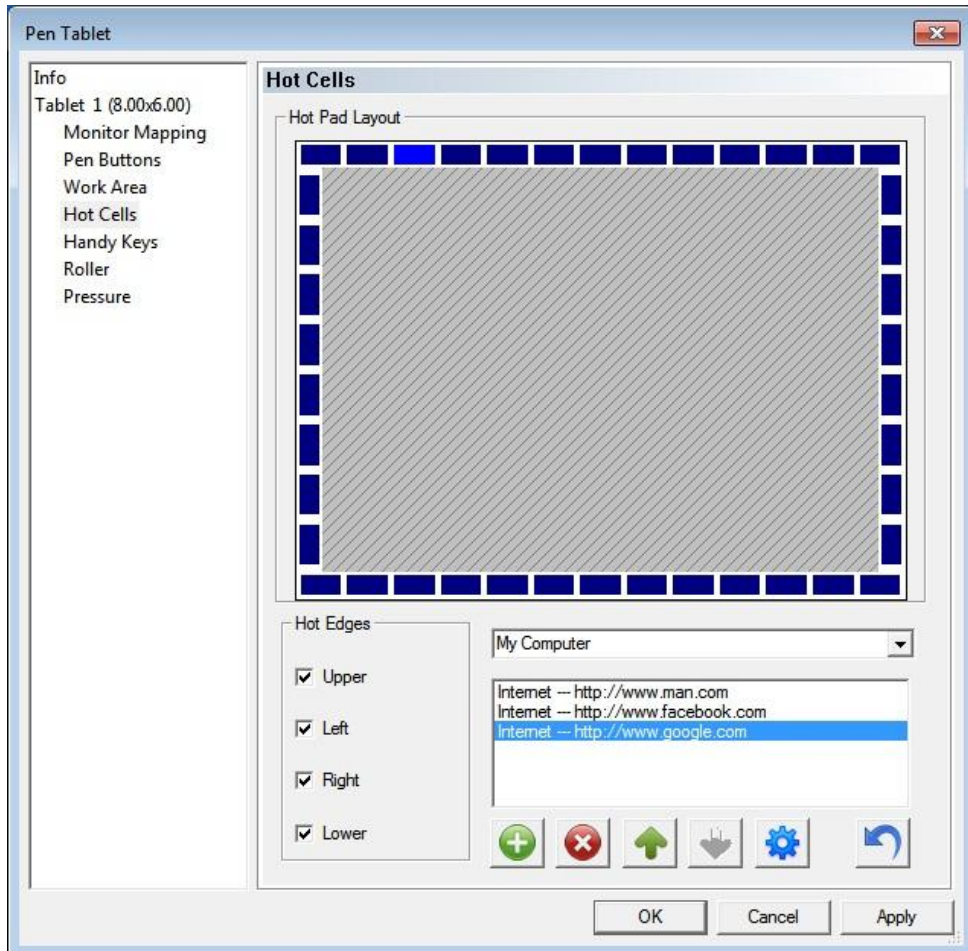


Diagram 21 Multiple Web site addresses defined

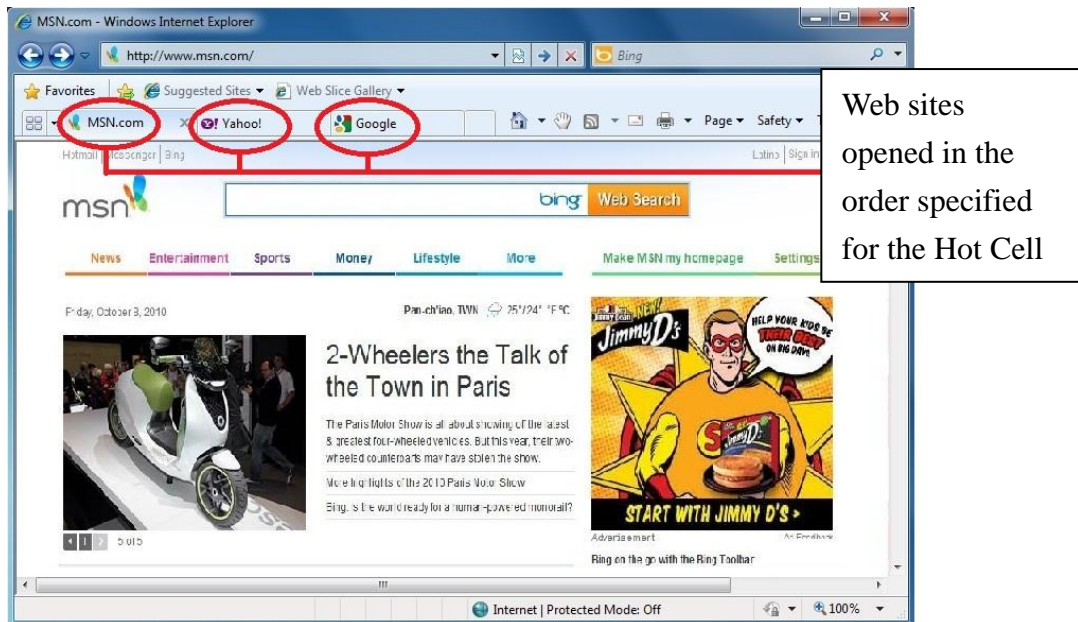



Diagram 22 All specified Web Sites are visited

6.6 Changing Hot Cell settings

Press  to change the actions previously assigned to a Hot Cell. The previously assigned actions are shown first.

6.7 Restoring Hot Cell Settings

Press  to restore the settings of a Hot Cell right before the last time you selected

Change Hot Cell 

7. Configuring Handy Keys

When you press one of Handy Keys with your finger, a pre-defined function will be performed. The function may be a single action such as running a program or visiting a web site. The function may also consist of a series of actions, such as opening several web pages that you visit often as a group, or print and followed by save. As in defining Hot Cell functions, you may also specify a key combination to call out the same function as defined for this Handy Key.

The actions that may be attached to a Handy Key are exactly the same as those for Hot Cells. The configuration options are also identical. See Diagrams below showing some examples.

Note: A special function of Handy Key is to assist with the use of Roller.
See Section 7 Configuring Roller below.. As the factory default,
Handy Key 4 is defined to select the next Action Pair as *active* for
the Roller.

7.1 How to configure a Handy Key

- (1) To configure a Handy Key, you need to call up Tablet Configuration Panel first and select Handy Keys to display Handy Key Configuration Panel (see Diagram 23 below). Select the Handy Key you wish to configure in this panel. The currently defined function for this key will be displayed. You should see none, one, or more actions listed in the bottom window.

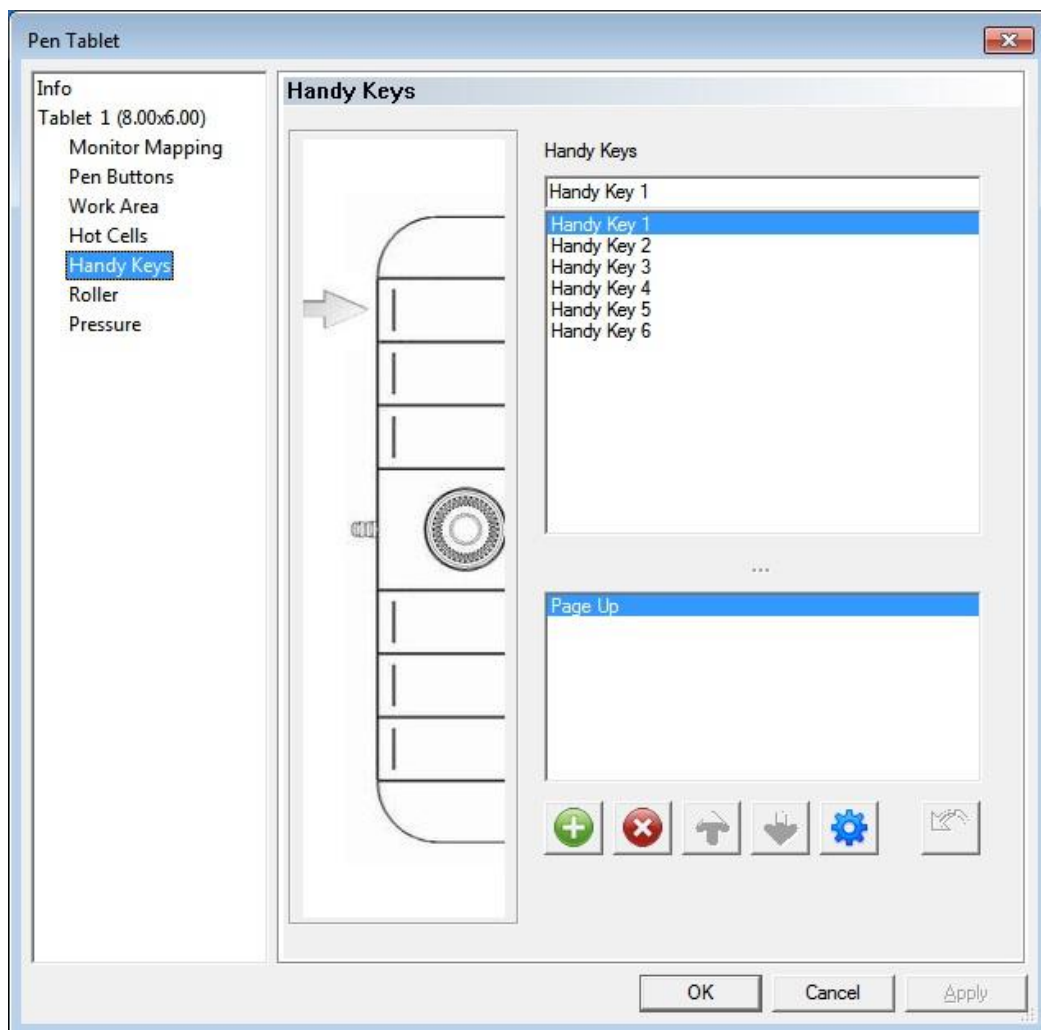



Diagram 23 Handy Key Configuration Panel

- (2) Select the New button () to add a new action to the list of for the selected key (see Diagram 24 below). Define Handy Key Action Panel will be displayed (see Diagram 25 below). You may now select one action from this panel. You may repeat this to add more actions to the Handy Key.

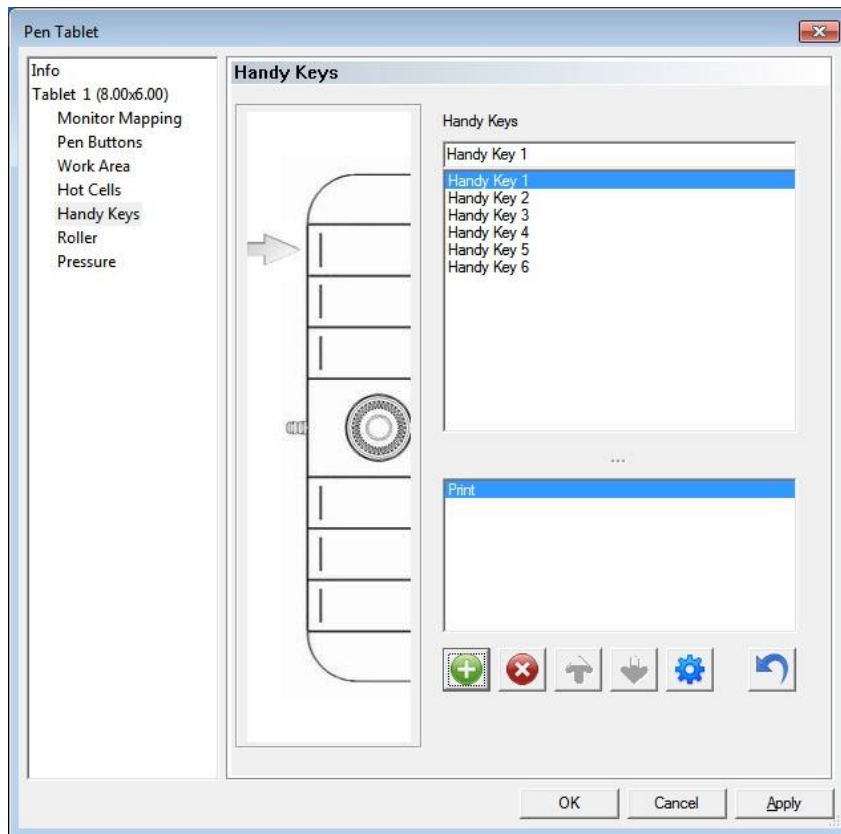


Diagram 24 Select Add button to add a new action for a Handy Key

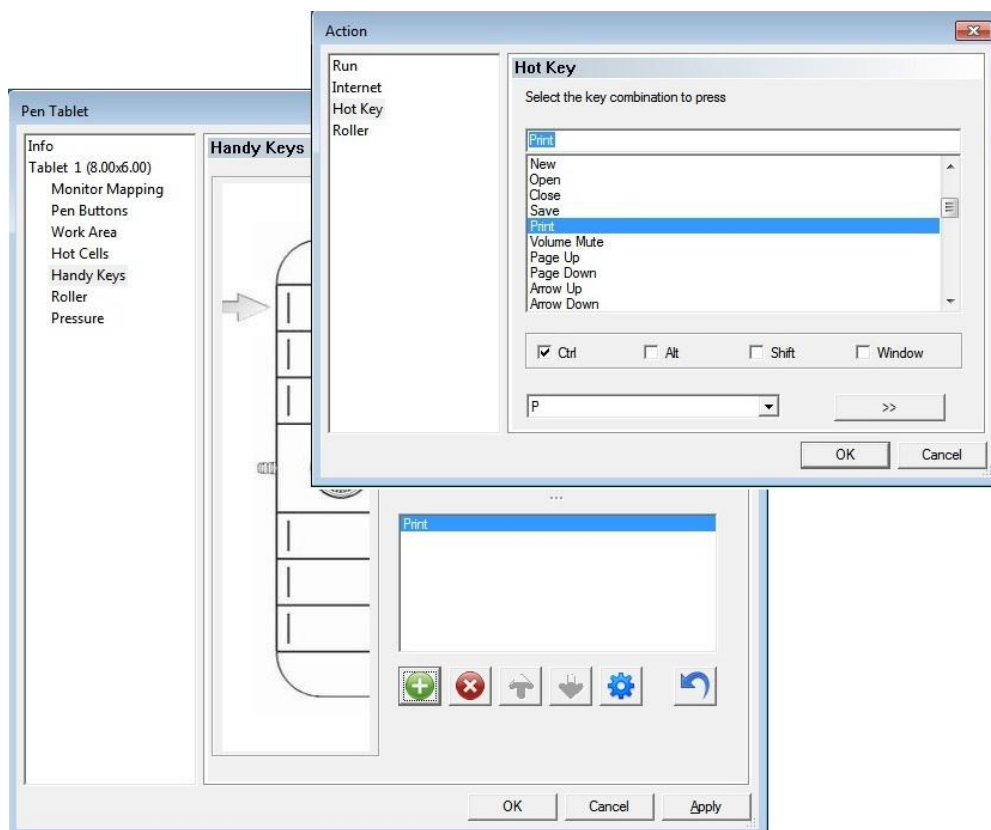



Diagram 25 Select an action for a Handy Key

- (3) To remove any action from a defined function, select the action and select the Delete button()

7.2 Examples of configuring a Handy Key

7.2.1 Example 1 – Attaching a single action

First, call out the Handy Key Definition Panel and select one of the Handy Keys, say, Handy Key 3, as shown in the Diagram below.

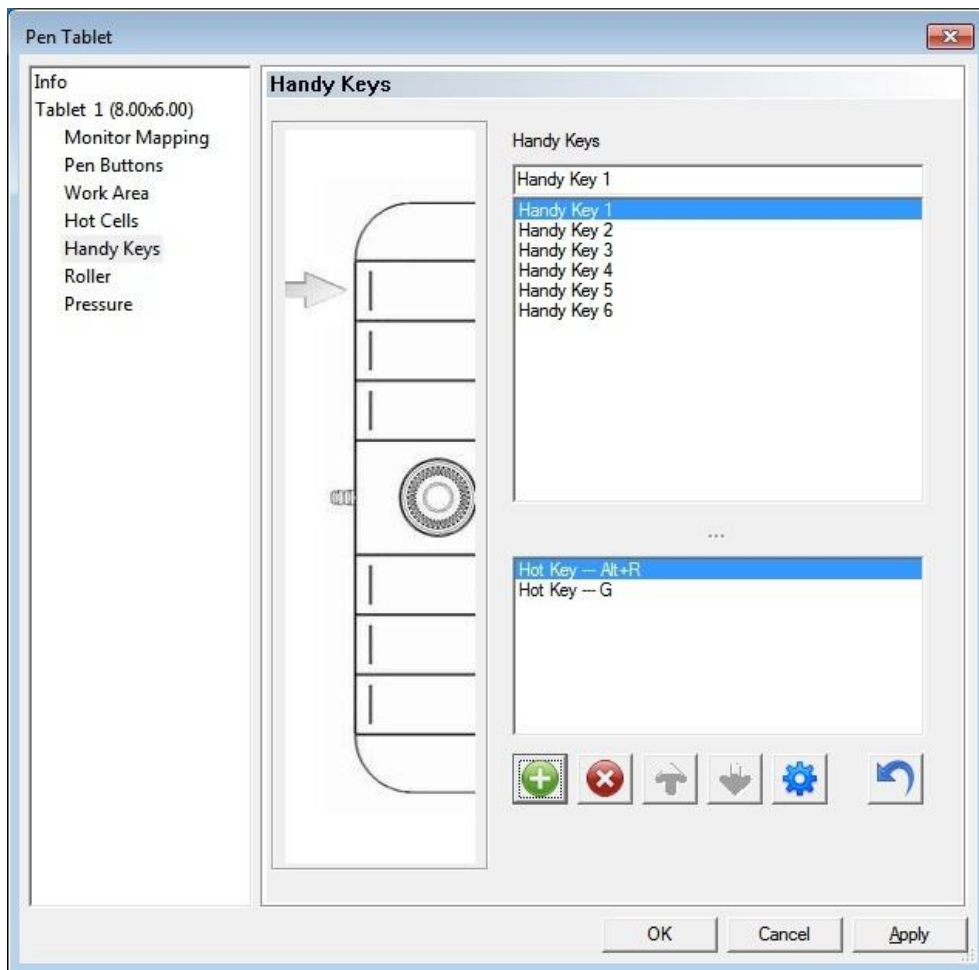


Diagram 26 Defining Handy Key 3

Now, select one of the actions, say, Run an application, and press OK, as shown in the Diagram below.

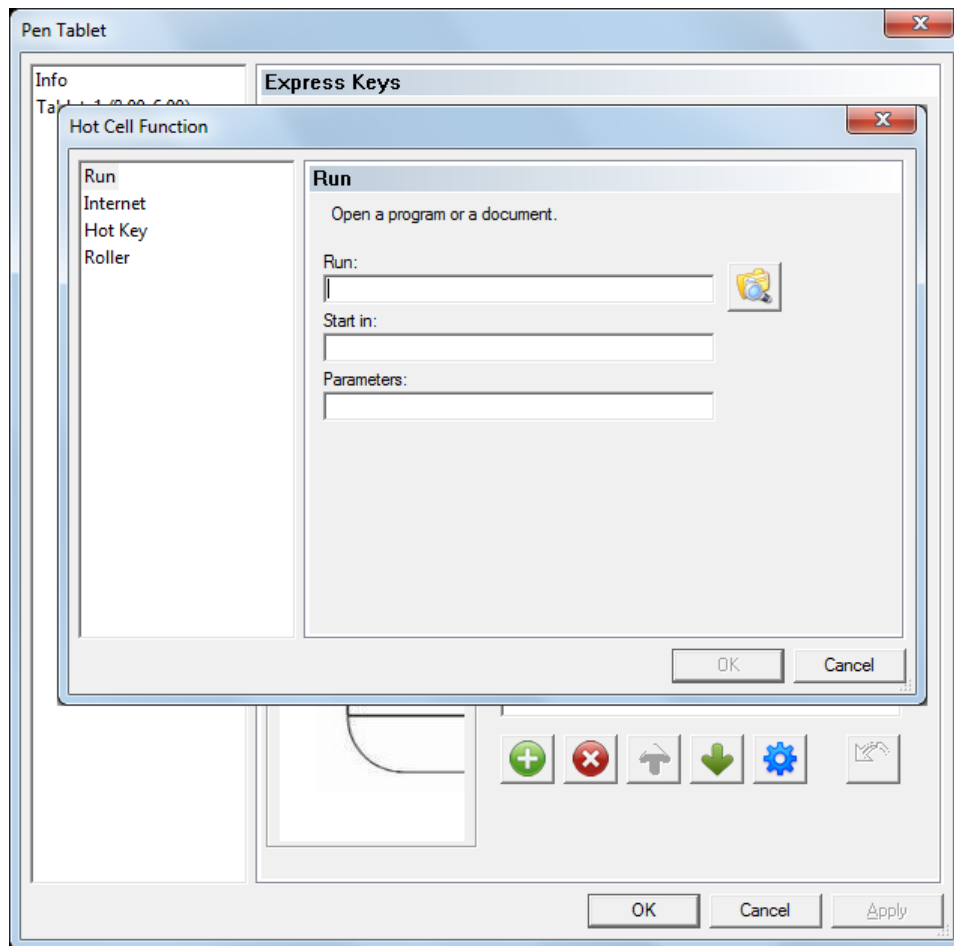


Diagram 27 Attaching “Run” action to a Handy Key

Alternatively, you may attach a Hot Key combination (such as Ctrl-Alt-a) to this Handy Key, so that when you press the specified key combination, the function attached to the Handy Key will be performed. See Diagram below.

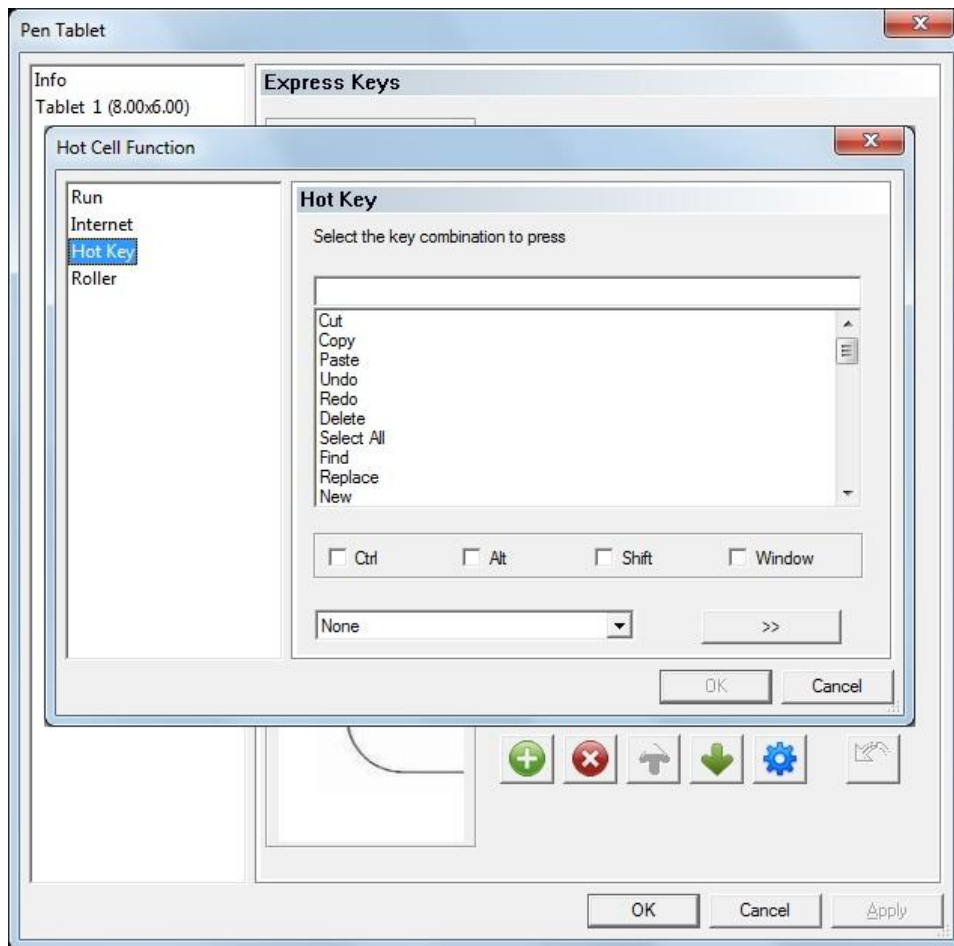


Diagram 28 Attaching Hot Key combinations to trigger Handy Key function

8. Configuring Roller

Roller can be defined to perform action pairs such as *scrolling up/scrolling down* in viewing web pages, and *volume up/volume down* in playing music. For example, if the action pair *scrolling up/scrolling down* is attached to Roller, rotating roller in one direction will perform one or more scrolling up actions, while rotating in the other will perform scrolling down.

8.1 Attaching Action Pair(s) to Roller

To attach or detach Action Pair(s) to Roller, call out Define Roller Function Panel (see Diagram 29). You select one of the applicable actions from the right window and press the green left arrow (➡) to add it to the Selected Action Pair list, displayed in the left window. To remove an Action Pair from the defined list, select it and press the green right arrow (⬅) to remove the action defined.

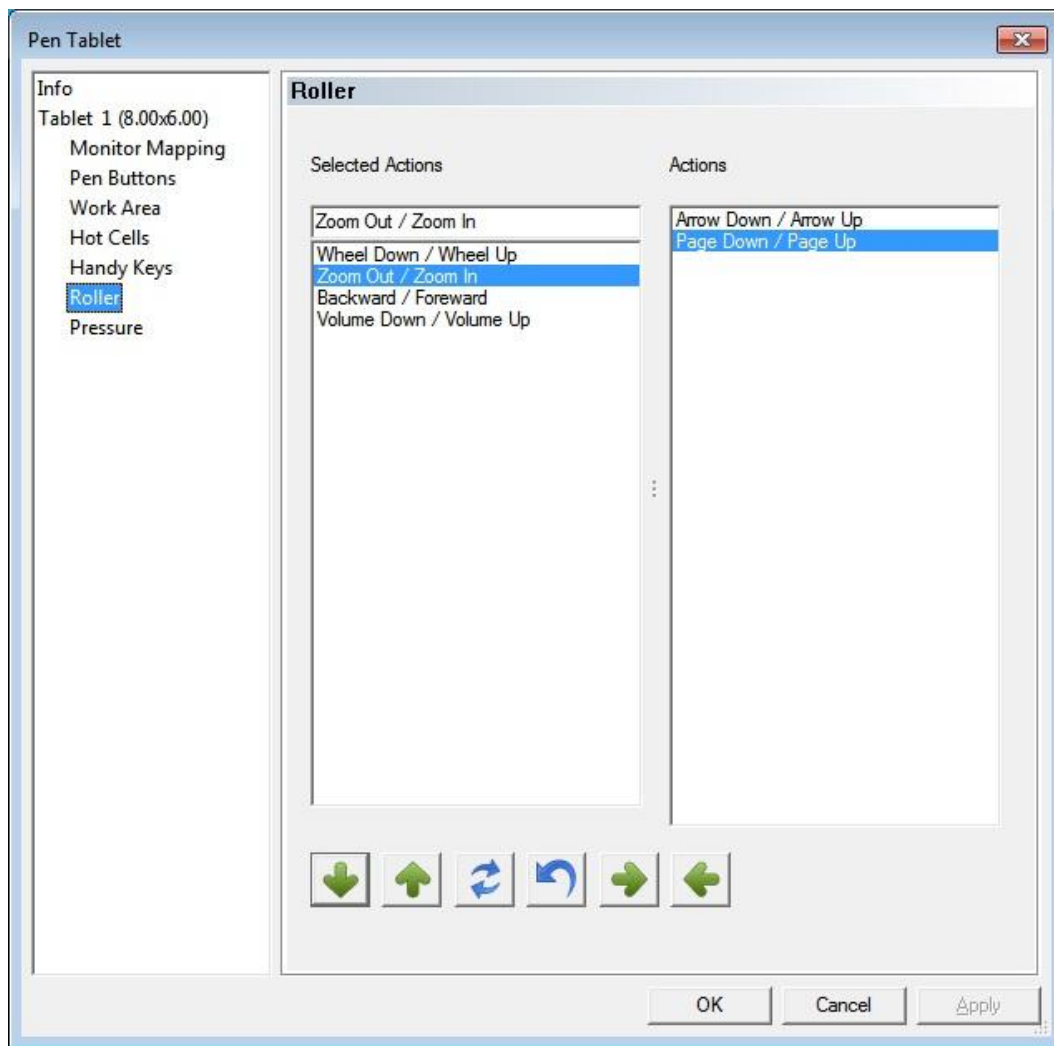


Diagram 29 Attaching Action Pair(s) to Roller

8.2 Applicable Action Pairs

The table below shows the Applicable Action Pairs to attach to Roller.

Applicable Pair	Description
Scroll down/scroll up	Simulate the action of a mouse roller – this action pair cannot be removed.
Enlarge/reduce	Simulate pressing Ctrl++ and Ctrl- -on the keyboard, that is, press and hold the control key, and then press plus or minus key.
Volume down/volume down	Turn down or up volume when playing music or video
Down arrow key/up arrow key	Simulate pressing down arrow or up arrow on the keyboard.
Previous page/next page	Simulate pressing Alt-left arrow or Alt-right arrow on the keyboard, usually used in a browse to move to a previously viewed page or the next viewed page.
Page up/page down	Simulate pressing Page up key or Page down key on the keyboard.

8.3 Selecting a method to choose active Action Pair

If more than one action pair is attached to Roller, only one of these pairs is *active* at any time. You may change the active pair by defining one of the Handy Keys to perform this function. There are three options for using the specified Handy Key to select the active action pair: Select Next Function, Select Previous Function, or Popup a Menu to select, as explained below. In the description below, we assume Handy Key 4 has been defined to select the active action pair for Roller, and three action pairs, (1) *Scroll up/scroll down*, (2) *volume up/volume down*, and (3) *previous page/next page*, have been attached to Roller in that order, and the current active action pair is *Scroll up/scroll down*.

- (1) Select Next Function – when Handy Key 4 is pressed, the active action pair becomes *volume up/volume down*, which is the next pair after the current one.
- (2) Select Previous Function – when Handy Key 4 is pressed, the active action pair becomes *previous page/next page*, which is the previous pair before the current one (the “previous” pair of the first pair is the last pair)..
- (3) Popup a Menu to Select – When Handy Key 4 is pressed, a menu showing all currently attached action pairs will be displayed, so you may select one to be the active one.

The diagram below shows the panel used to select one of the above options.

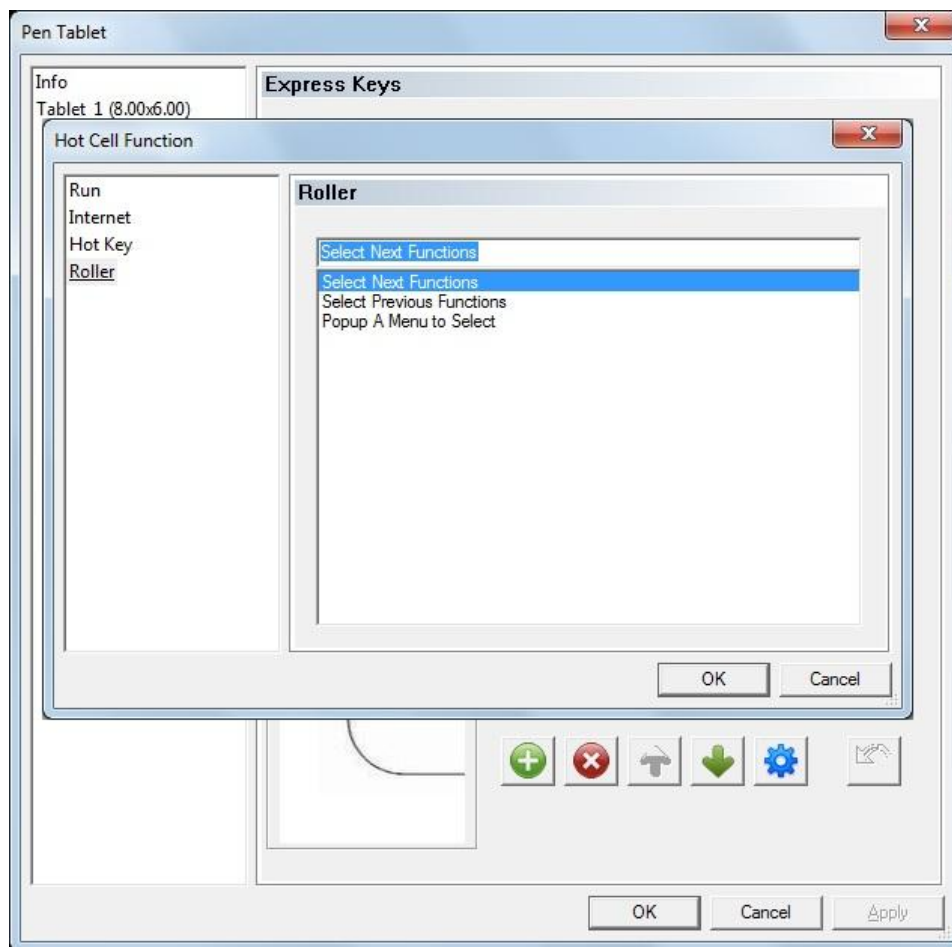


Diagram 30 Defining a Handy Key for selecting the method of choosing active Action Pair

9. Testing and Configuring Pressure Sensitivity

When you press Digital Pen against the Tablet in Work Area, the Tablet senses the pressure exerted by Pen Tip and sends the pressure value to the computer. The pressure value has a minimum of 0 and a maximum value depending on the model of the Tablet. This section describes the procedure for verifying the proper functioning of this *pressure sensitivity* function. This procedure is especially useful when an application program appears to lose pressure sensitivity function or when you are not familiar with pressure-dependent functions of an application program and need to experience the feel of a pressure sensitive Digital Pen. See Diagram 31 below.

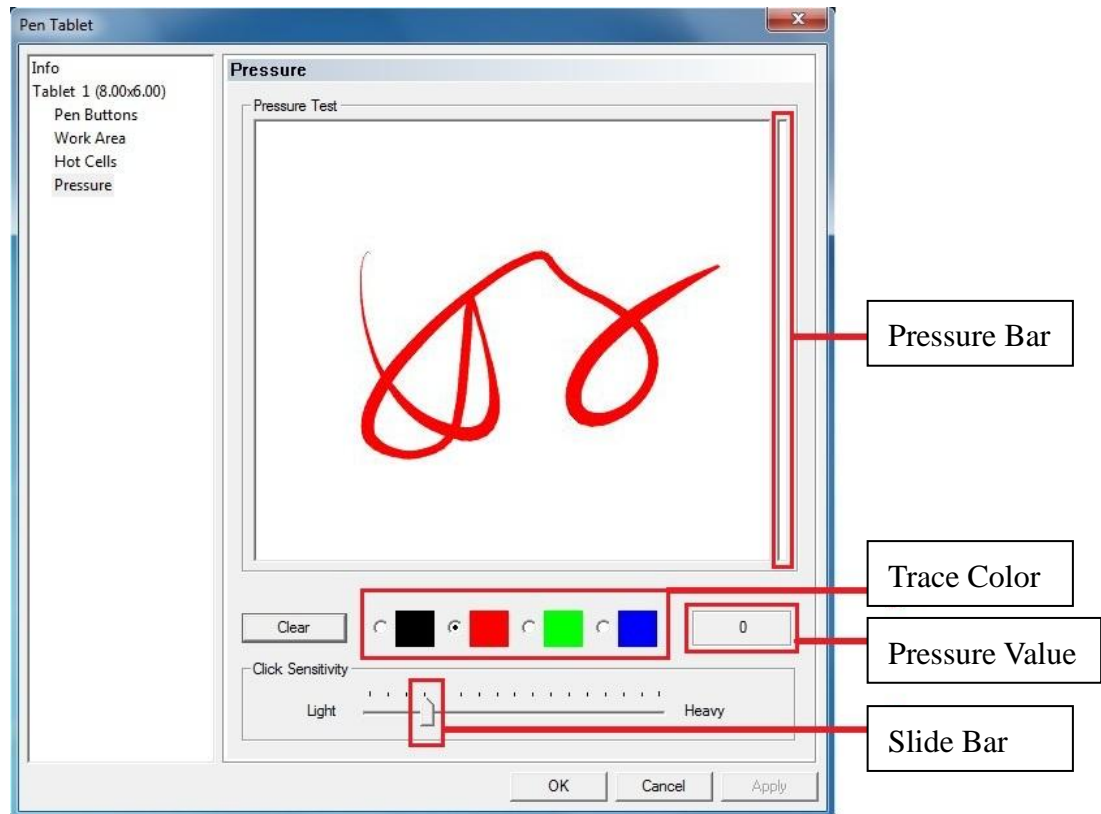


Diagram 31 Pressure Configuration Panel

9.1 Pressure Test Area

This area shows the trace of your drawing action, showing a thicker line when you press harder. The Pressure Bar on the right hand side graphically reflects the pressure value with its height – taller bar indicates higher pressure.

If the displayed Pressure Value or Pressure Bar does not vary as you press Pen Tip with varying force against the Tablet surface within Active Area, there is either no Pressure Sensitivity function or Driver Software has not been properly installed.

9.2 Clear Button

Tapping “Clear” button clears the trace shown in Pressure Test Area.

9.3 Trace Color Area

You may pick any of the colors shown to be the color of trace.


9.4 Pressure Value


The numeric value shown in real time in this area is the actual Pressure Value sent to the application program by the driver.

9.5 Click Sensitivity Area

Moving the Slide Bar toward “Light” means a slight tap with Pen Tip would cause a “click” to be registered, making the pen feel “lighter.” Try and adjust the Pen Tip sensitivity to your liking. Note that this has no effect on the pressure value sent to an application program.

10. Show Icon in System Tray

If you select “Show Icon in System Tray” on Tablet Configuration Panel (see Diagram 6 Tablet Configuration Panel on page 16, label **k**), the icon representing Digital Tablet () will show in System Tray, normally in the lower right corner of the screen. Turning this feature on not only gives visual confirmation of the presence of Digital Tablet, but also provides a convenient way of calling up Tablet Configuration Panel.

If you de-select *Show Icon in System Tray*, that is, tick the square off, the Digital Tablet icon () will not show in System Tray, even with Driver Software installed properly and Digital Tablet properly connected and functioning.

Part E Frequently Asked Questions (FAQ)

1. General Questions

1.1 Can I connect my tablet to a 4- or 8-port USB hub?

A USB hub device may not have enough power for a tablet, especially when many devices are attached and operating at the same time. It is best to connect your tablet into a USB port on your PC or Notebook PC.

1.2 Does Digital Tablet support dual monitors? I use two monitors at the same time, would the tablet work with both of them?

Dual monitors are supported if Driver Software is installed.

1.3 Can I use the tablet and a regular mouse at the same time?

You may install both a tablet and a regular mouse on the same PC, but you should use one of Wireless Mouse or the regular mouse at any one time. You should also keep your Digital Pen out of the tablet Active Area when using a regular mouse (or Wireless Mouse).

1.4 How do I update Driver Software for the tablet?

You may download the most up-to-date version of Driver Software for your model from our website and follow the instructions below to install it. See also Setup Guide Section 3 Installing Driver Software on page 10.

- (1) Uninstall the old version of Driver Software: Click [Start] ► [All Programs] ► [TABLET] ► [Uninstall], then restart the computer.
- (2) Unzip the .zip file into a folder on your hard disk.
- (3) Double-click Setup.exe in the folder to execute it.
- (4) Follow the instructions on screen to complete the installation and restart the computer.

1.5 How do I change the functions pre-defined for Hot Cells on the tablet?

Hot Cell functions may be defined to your liking by calling up Configuration Panel and choose Hot Cells. Please see Configuration Guide Section 6 Configuring Hot Cells on page 23 for more details.

1.6 My tablet seems to have lost its pressure function. What do I do?

You should first check your application program to ensure that the pressure sensitivity function is not inadvertently turned off. If the pressure function is turned on, you should first ensure that your Digital Tablet is properly connected and Driver Software is properly installed. Proper connection of Digital Tablet may be verified by unplugging and

plugging it and watch the LED light. See Section 4.1 Digital Tablet Startup in Setup Guide on page 12. You may verify pressure sensitivity by calling up Configuration Panel and choose Pressure. See Section 4.5 Verifying Pressure Sensitivity in Setup Guide on page 13.

1.7 What can I do when the protective cover of Digital Tablet is scratched?

You may go back to where you obtained your Digital Tablet to get a replacement cover for your model of Digital Tablet. Scratches do not affect the functionality of Digital Pen Device.

Note: Digital Tablet cover is not covered by the warranty.

A good protective cover does not overly wear out Pen Tip and provides a natural degree of resistance for writing or drawing. It also allows you to put a drawing underneath it for tracing, and to label the hot cells to remind you of their defined functions.

1.8 My Pen Tip seems to have worn out, what can I do?

When Pen Tip wears out, you may change it with a replacement Pen Tip included in Digital Pen Device package. The diagrams below show the procedure to change Pen Tip. Make sure you use the Pullout Tool included in the Package specifically for this purpose.

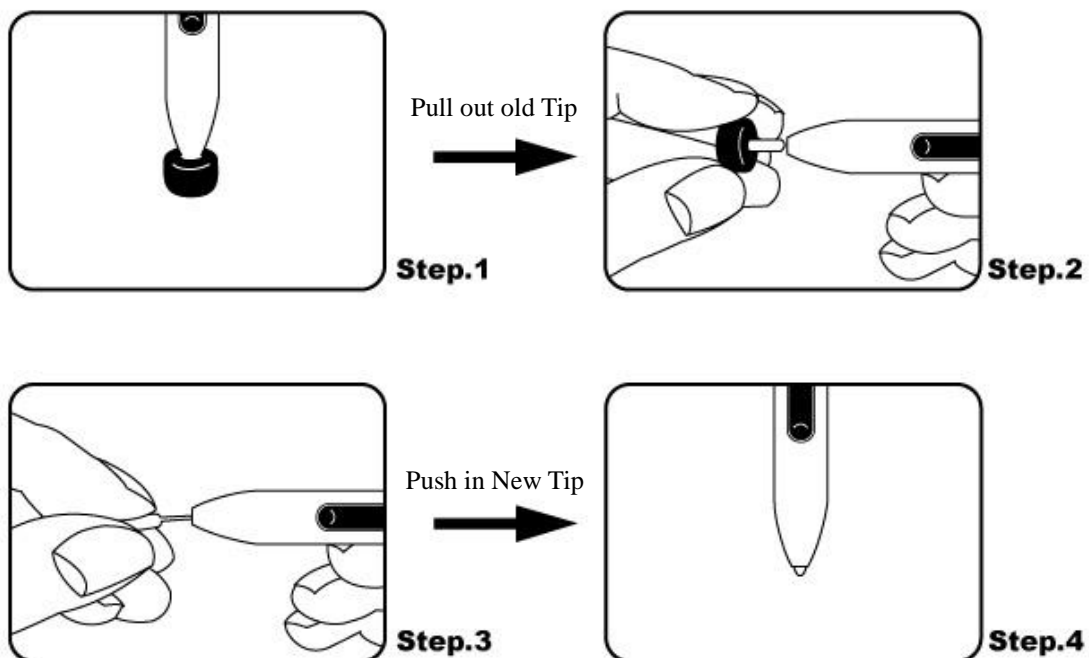


Diagram 32 Changing Pen Tip

Note: Do not use a sharp pair of pliers to pull out the worn Pen Tip to avoid damages.

Note: Be sure to press the new Pen Tip in place, otherwise Digital Pen will not function.

2. Usage Basics

2.1 How should I hold the pen?

Hold Digital Pen vertically with a slight slant as you do regular pen or pencil, but do not over-slant it.

The tablet senses Digital Pen when its tip is up to $\frac{1}{4}$ inch (about 5 mm) above its surface. Do not let Pen Tip touch the tablet surface if you only wish to move the cursor around on the screen.

Note: Please do not put a regular mouse on the tablet surface to avoid scratching and other possible problems.

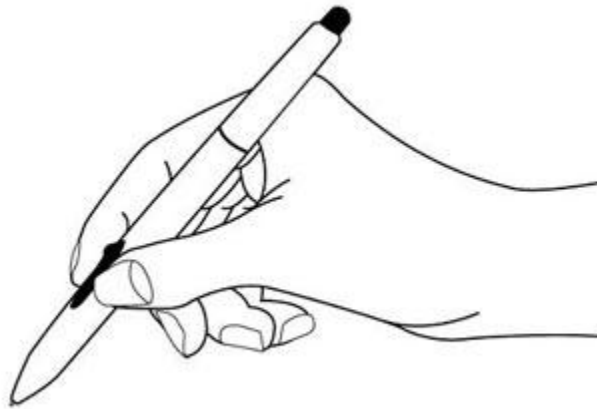


Diagram 33 Holding Digital Pens

To perform a Single Click, tap the surface of the tablet once with the pen tip.

To perform a Double Click, tap the surface of the tablet twice with the pen tip, and try to tap the same spot. Also try not to move Pen Tip at each tap.

To perform a Drag, touch the tablet surface and press against it, and move the pen while keeping Pen Tip on the tablet surface.

2.2 How do I use the wireless Digital Mouse?


Keep the wireless Digital Mouse on the tablet surface to use it. The Digital Mouse functions only when it is within Active Area. You use it the same way as you would a regular mouse.

3. Technical Support

3.1 The LED light on the Tablet is blinking, what does it mean?

The LED Light is the key indicator of the working status of Digital Tablet.

1. When the tablet is connected to the computer, the LED blinks quickly until the computer has recognized the tablet.

Note: If Driver Software is installed properly, the Tablet Icon () will show at the bottom right corner of the screen, unless you have stopped its display through Configuration Panel.

2. The LED blinks slowly when the tablet detects the presence of Digital Pen or Digital Mouse
3. The LED stays lit while either Pen Tip or one of the Pen Buttons is pressed.

3.2 When using the pen, why does the cursor on screen tremble or not moving smoothly?

1. Make sure Pen Tip is not too far away from the Table surface. The maximum detectable height is about $\frac{1}{4}$ inch (about 5 mm) from the pen tip to the tablet surface.
2. The battery in Digital Pen may be low, or may have dislocated. Replace the battery or reinstall the battery and see if the problem goes away.
3. You may have left Pen Tip within Active Area while using a regular mouse or Digital Mouse. Take the pen out of active area.

If the problem persists, there may be a hardware problem. Take Digital Pen Device to the store where you obtained it and seek assistance there.

3.3 The cursor on screen won't move when I move Digital Pen around Digital Tablet. Why?

There may be a number of possible causes.

First of all, verify that the LED indicator blinks slowly when Pen Tip hovers over the tablet surface within Active Area, at a maximum height of about $\frac{1}{4}$ inch or 5 mm. If it does not, it is possible that the battery in Digital Pen needs to be replaced, or wire connections are loose. Replace the battery and verify that USB connections are attached properly. If neither solution works, either Digital Pen or Digital Tablet is faulty. Try to obtain a known working Digital Pen and test it again. If this does not work, seek technical assistance from an expert.

If LED indicator blinks when Pen Tip is within Active Area and the cursor still does not

move, the problem may be with Driver Software. Detach Digital Tablet from the computer and remove Driver Software by selecting [Start] ► [All Programs] ► [TABLET] ► [Uninstall], then restart the computer.

Attach Digital Tablet again to the computer and see if the cursor will move along with Digital Pen movement on the tablet. If not, the battery in Digital Pen may be weak or the battery is dislocated. Replace the battery and see if it works. If not, seek technical assistance from an expert.

If Digital Tablet works without Driver Software, but stops working after Driver Software are installed, the installed Driver Software is incompatible with your Digital Tablet on the particular operating system (Windows or Mac OS). Try to install a compatible Driver Software.

3.4 Why is Digital Pen's battery running out so quickly?

It is likely that the tip of Digital Pen was pressed during storage.

Digital Pen draws its power from a battery inside. It starts to consume power as soon as Pen Tip is pressed. After several minutes of non-use, Digital Pen automatically shuts itself down to conserve energy. Digital Pen with fresh battery is designed to last many months if used for several hours each working day.

When storing Digital Pen, you should keep Pen Tip from touching anything to avoid triggering it unintentionally. For instance, you may keep Digital Pen in the provided Pen Holder (if one is provided in the product package), keep Pen Tip pointing upward in a penholder, or else ensure the tip of Digital Pen does not move to press against anything when lying in a drawer.