

Uniscan e46 Utility



User's Manual

Preface

©Copyright 2002

All Rights Reserved.

This manual is designed to assist you in using the *Uniscan e46 Utility*. Information in this document has been carefully checked for accuracy; however, no guarantee is given to the correctness of the contents. The information in this document is subject to change without notice.

In no event will the manufacturer be liable for direct, indirect, special, incidental, or consequential damages arising out of the use or inability to use the product or documentation, even if advised of the possibility of such damages.

This document contains proprietary information protected by copyright. All rights are reserved. No part of this manual may be reproduced by any mechanical, electronic, or other means in any form without prior written permission of the manufacturer.

Table of Contents

Preface.....	i
About the Uniscan e46 Scanner.....	1
Equipment included:	1
Software Installation.....	2
Connecting to the Scanner	3
The Uniscan e46 Utility Interface.....	5
Using the Uniscan e46 Utility.....	6
Scan Function	6
Copy/Print Function	8
Custom Function	11
OCR Function.....	13
E-mail Function.....	15
Preferences	17
Function Settings	18
Select Menu.....	19
<i>Add Application</i>	<i>19</i>
Preference Settings	24
<i>Display Scanner Status</i>	<i>24</i>
<i>Temp Folder</i>	<i>25</i>
<i>Smart Scan Status</i>	<i>25</i>
Scanning with TWAIN compliant applications	26

How to Initiate the TWAIN interface	26
Scanning settings.....	28
<i>Preview Window</i>	<i>28</i>
<i>Ruler Button.....</i>	<i>28</i>
<i>Crop.....</i>	<i>29</i>
<i>Drag.....</i>	<i>29</i>
<i>Zoom</i>	<i>29</i>
<i>MultiJob</i>	<i>29</i>
<i>Setup</i>	<i>29</i>
<i>Help</i>	<i>29</i>
<i>Message bar.....</i>	<i>29</i>
<i>Toggle Advanced/Primary Mode</i>	<i>29</i>
Configuration area.....	31
General Settings	31
<i>Color Mode</i>	<i>31</i>
<i>Resolution.....</i>	<i>32</i>
<i>Descreen</i>	<i>34</i>
<i>Scan Size</i>	<i>35</i>
<i>Auto Adjust</i>	<i>35</i>
Image Adjust.....	35
<i>General Adjust.....</i>	<i>35</i>
<i>Curves</i>	<i>37</i>
<i>Level.....</i>	<i>37</i>
<i>HSB (Hue, Saturation and Brightness)</i>	<i>38</i>
Tips for correcting scanned images	39
Problems with connections	43
<i>Scanner does not respond.....</i>	<i>43</i>
Problems during installation	43
<i>Setup wizard does not autostart.</i>	<i>43</i>
<i>Cannot find program icons after restarting the computer.....</i>	<i>43</i>
<i>Setup wizard crashes during installation.....</i>	<i>43</i>
Other problems with the scanner.....	43

<i>The scanner's scanning lamp does not light up.....</i>	<i>43</i>
<i>Scanner scans very slowly.....</i>	<i>43</i>
<i>Error: Scanner not found.....</i>	<i>44</i>
Problems in TWAIN	44
<i>The TWAIN window does not appear after choosing Acquire.</i>	<i>44</i>
<i>Unable to scan to application software.....</i>	<i>44</i>
Problems with the scan.....	44
<i>The scanned image is too light or too dark.....</i>	<i>44</i>
<i>Moiré patterns appear on the scanned image.....</i>	<i>44</i>
<i>Transitions in color are very abrupt (after scanning in true color mode).....</i>	<i>44</i>

Chapter 1

About the Uniscan e46 Scanner

Equipment included:

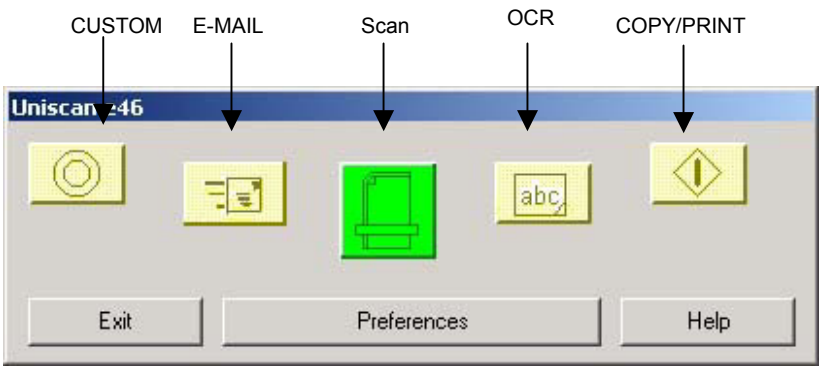
Please ensure all the following items are included before installing the Uniscan e46 scanner.



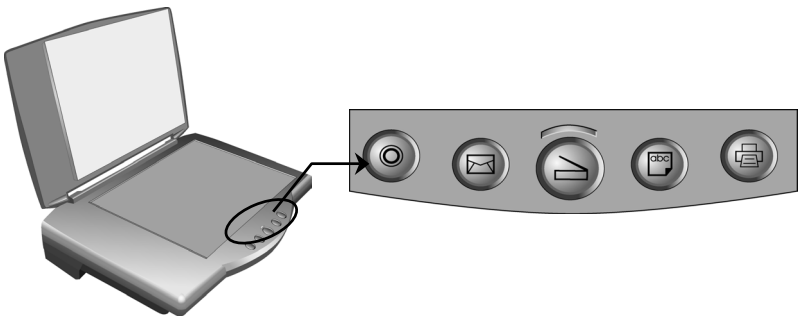
1. Uniscan e46 Scanner
2. Power cord
3. USB Connector
4. Quick guide
5. Installation CD

Software Installation

The *Uniscan e46 Utility* provides a convenient interface for accessing the advanced scanning functions. With the *Uniscan e46 Utility*, you can quickly scan documents or images, make a quick copy of a document and send it to the printer, scan an image and send it directly to your email client, scan text documents and edit them with word processing software, or define a default application to send your scanned document to for post processing.



The *Uniscan e46 Utility* interface emulates the control pad on the scanner, and allows you to control scanner functions from your PC:



The *Uniscan e46 Utility* interface has five buttons: Scan, OCR, CUSTOM, Copy/Print and E-mail. Pressing a button scans an item and sends it to your printer or a specific application, such as your e-mail software.

Each button has a default application pre-selected for post processing. When you install the scanner, the software checks your computer for an application that is appropriate for each button (for

example, Microsoft Outlook for the E-mail button). If one is found, the software assigns that application to the button.

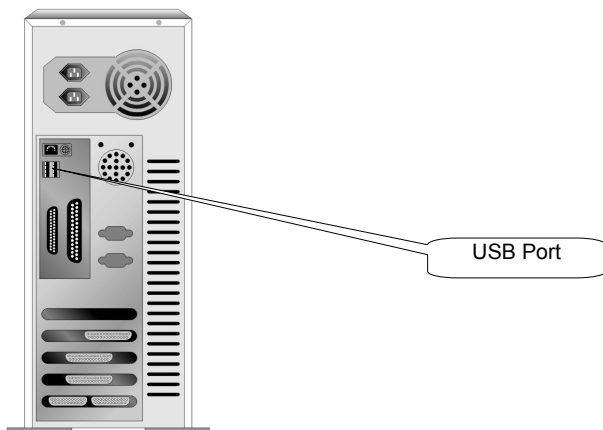
If you want to select another application or customize the scan settings, you can create new configurations or edit existing ones. For example, if you scan color photos for use on the Web, you can create a configuration that works best when scanning pictures for use with HTML.

Connecting to the Scanner

This scanner uses the USB interface, which is only supported by Microsoft Windows 98/Me, 2000 or XP.


Plug & Play devices are supported by the USB interface. To verify whether your computer supports USB, first make sure there is a USB port at the back of your PC (some computers have USB ports in other locations, such as on the monitor or keyboard).

If your computer does not have any USB ports, you may need to install a USB interface card (check your computer User's Manual for USB support information).



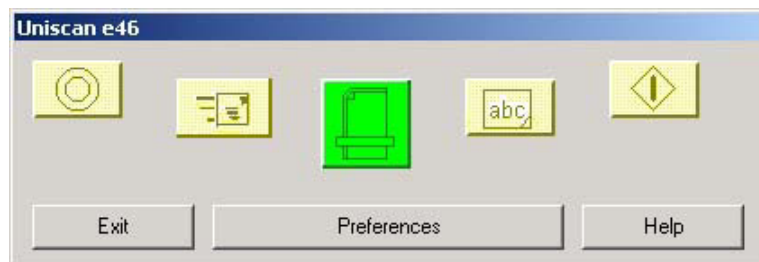
About the Uniscan e46 Scanner - Connecting to the Scanner


Starting the Uniscan e46 Utility

After installing the scanner software and drivers and rebooting, the scanner icon  will be displayed in the Windows taskbar:

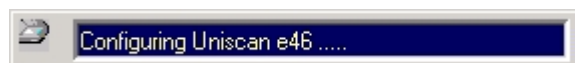


Double-clicking the icon opens the *Uniscan e46 Utility*:

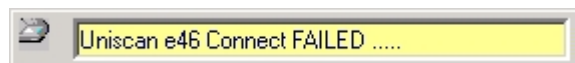


Note: If you have not connected the scanner to the PC, the scanner disconnected icon  will be displayed. You must establish a connection before using the *Uniscan e46 Utility*.

Once you have connected the scanner via USB port, the Utility will automatically connect to the scanner and display the following message box:



If the connection fails, you will see the following message:



Please refer to [Troubleshooting](#) for more information.

Clicking a button opens the associated application. Click **Help** to display online help for the *Uniscan e46 Utility*. Click **Exit** to send the Utility back to the Windows Taskbar. Clicking **Preferences** enables you to set preferences for each application.


The Uniscan e46 Utility Interface

The following table describes the function of each button on the *Uniscan e46 Utility* interface:




Copy/Print Button: Click  to send a scanned image or document directly to a printer or printer application.

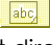


Fax Button: Click  to display your scanned item in the default fax software.

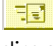


OCR Button: Click  to convert a scanned item to black and white text for use with word processing software.




E-Mail Button: Click  to send a scanned image or document directly to an e-mail program.

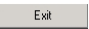


Custom Button: Click  to send a scanned image or document directly to a pre-selected application.


Preferences

Preferences: Click  to set preferences for each button. You can add and choose settings for post processing applications, set scanner status display options, and set advanced properties such as image mode, color control and resolution.

Exit

Exit: Click  to send the *Uniscan e46 Utility* back to the Taskbar.

Help

Help: Click  to display the online help for the *Uniscan e46 Utility*.

The next chapter describes how to use each function in detail.

Chapter 2

Using the Uniscan e46 Utility

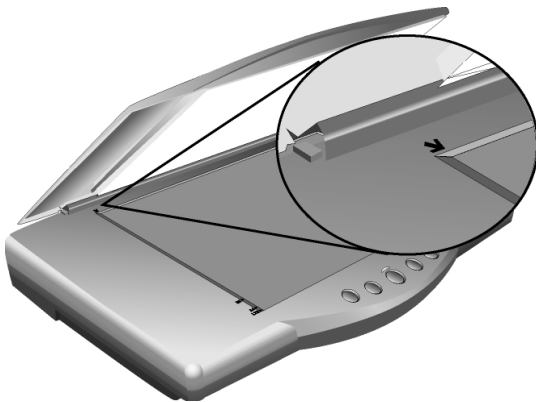
This chapter describes each function in detail.

Note: For information regarding the TWAIN Interface, refer to the TWAIN Interface online help.

Scan Function

Use the **Scan** function to scan images or documents and send them to the TWAIN Interface for image post processing. Follow these instructions:

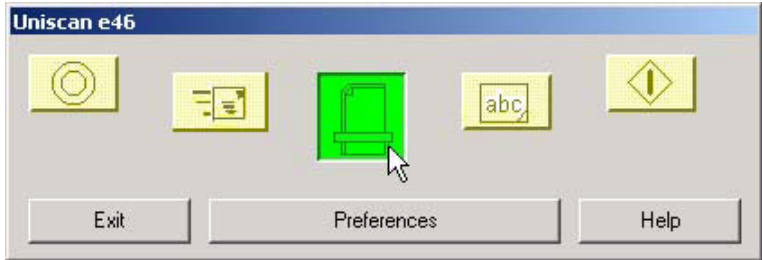
1. Place the item face down on the scanner, with the corner of the paper next to the arrow, as shown:



2. Double-click the *Uniscan e46 Utility* icon in the Windows taskbar. The *Uniscan e46 Utility* will open.



- Click the **Scan** button on the *Uniscan e46 Utility*. The TWAIN Interface will open.



- In the TWAIN Interface, make any adjustments to the **General Settings** and **Image Adjust** before clicking **Scan**.

If sending the scanned image to another application after scanning, you must wait at least ten seconds for the post-processing application to load.

Note: For information on setting the TWAIN interface options, refer to the TWAIN interface online help.

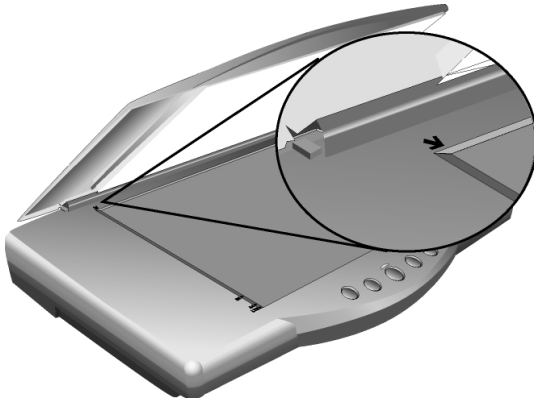


Note: You can set the post processing application that the TWAIN Interface sends the image to. Please refer to the [Preferences](#) section for more information about settings.

Copy/Print Function

Use the Copy/Print function to scan images or documents and send them to the printer.

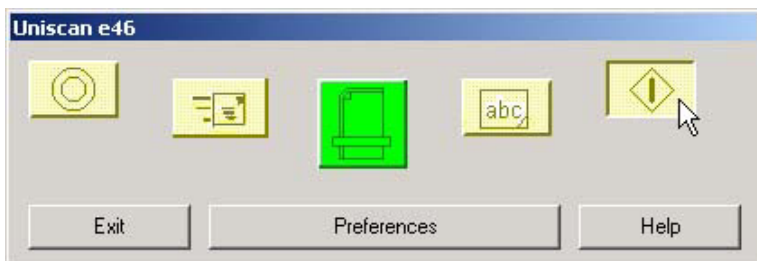
1. Place the item face down on the scanner, with the corner of the paper next to the arrow, as shown:



2. In Windows, double-click the *Uniscan e46 Utility* icon in the Windows taskbar. The *Uniscan e46 Utility* will open.



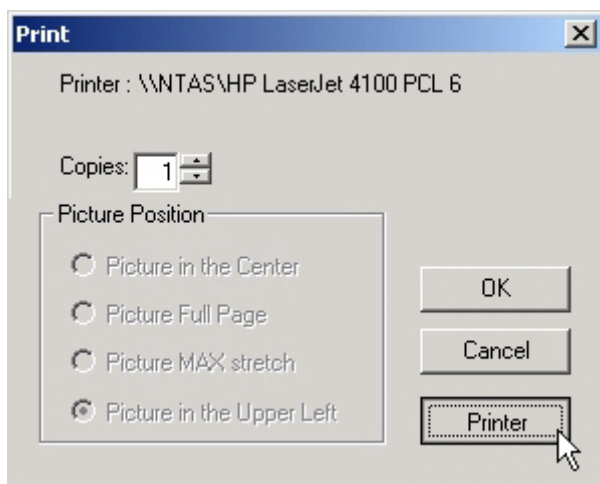
3. Click the **Copy/Print** button on the *Uniscan e46 Utility* interface.



Using the Uniscan e46 Utility - Copy/Print Function

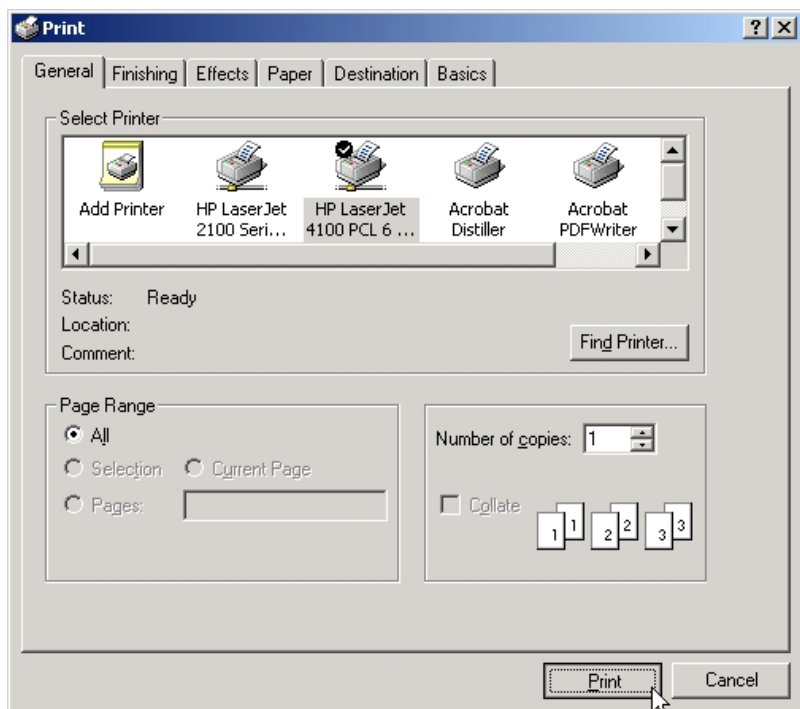
4. After the image is scanned, the **Print** dialog box opens. Note that you must wait at least ten seconds for the **Print** dialog box to load.

Note: By default, the scanned image is sent directly to the selected printer without opening the TWAIN Interface.



5. Click **Printer** to select a printer. A new **Print** dialog box will open. Select a printer icon from the menu. Click **Print** to print out the scanned image, or click **Cancel** to return to the Scanner Utility Print dialog box.

Using the Uniscan e46 Utility - Copy/Print Function



- Click **OK**. The document is then sent to your printer.

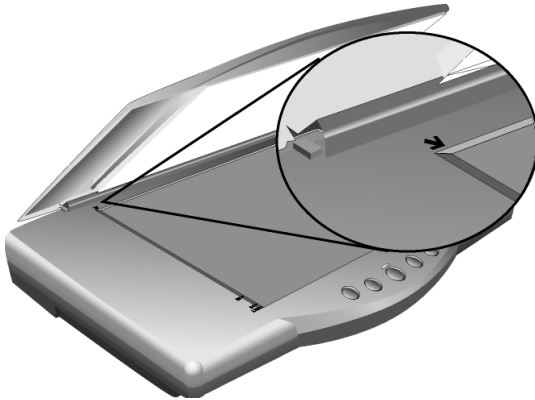


Custom Function

Use the **Custom** function to scan images and documents and send them to a user-defined application for post processing.

Note: Before you can use this function you must assign a default application for post processing.

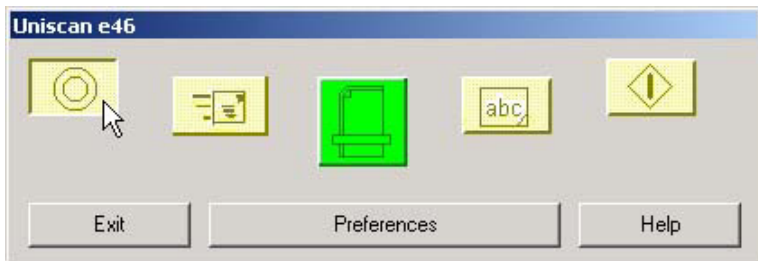
1. Place the item face down on the scanner, with the corner of the paper next to the arrow, as shown:



2. Double-click the *Uniscan e46 Utility* icon in the Windows taskbar. The *Uniscan e46 Utility* will open.



3. Click the **Custom** button on the *Uniscan e46 Utility*. The TWAIN Interface will open.

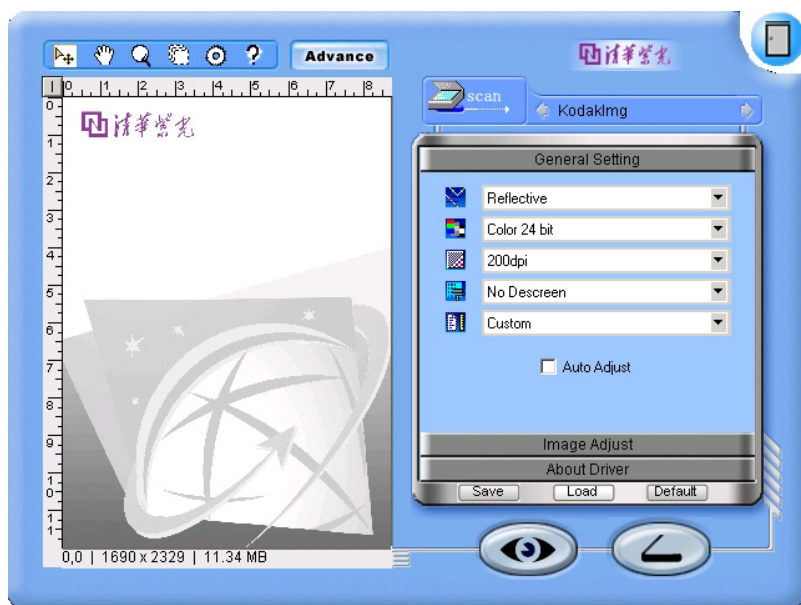


Using the Uniscan e46 Utility - Custom Function

4. In the TWAIN Interface, make any adjustments to the **General Settings** and **Image Adjust**. Then click **Scan**.

After the image is scanned, it is sent to the assigned application for post processing.

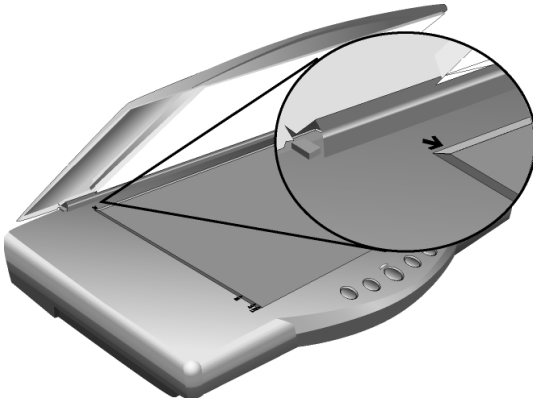
Note: For information on setting TWAIN interface options, please refer to the TWAIN interface online help.



OCR Function

Use the **OCR** function to scan images or documents and send them to your default word processing application. Follow these instructions:

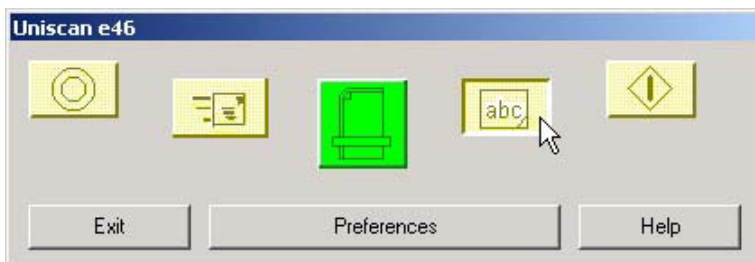
1. Place the item face down on the scanner, with the corner of the paper next to the arrow, as shown:



2. Double-click the *Uniscan e46 Utility* icon in the Windows taskbar. The *Uniscan e46 Utility* will open.



3. Click the **OCR** button in the *Uniscan e46 Utility*. The TWAIN Interface will open.



Using the Uniscan e46 Utility - OCR Function

4. In the TWAIN Interface, make any adjustments to the General Settings and Image Adjust, and then click **Scan**.

After the image is scanned, you must wait at least ten seconds for the word processing application to load.

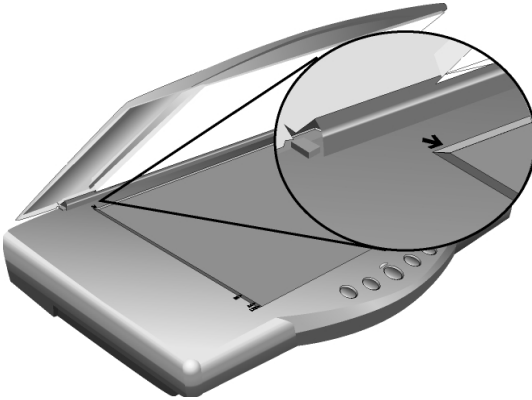
Note: Before you can use this function, you must assign a default application for post processing. Refer to [Preferences](#) for more information.



E-mail Function

Use the **E-mail** function to scan images and documents and send them to your e-mail program. Follow these instructions:

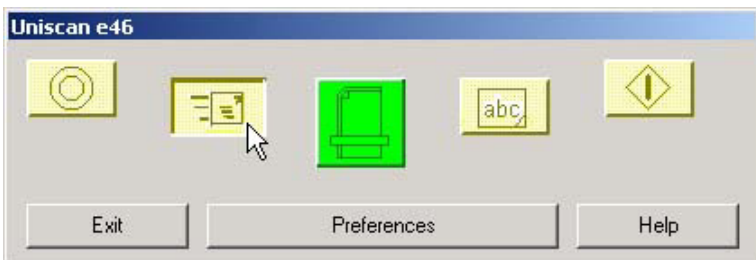
1. Place the item face down on the scanner, with the corner of the paper next to the arrow, as shown:



2. Double-click the *Uniscan e46 Utility* icon in the Windows taskbar. The *Uniscan e46 Utility* will open.

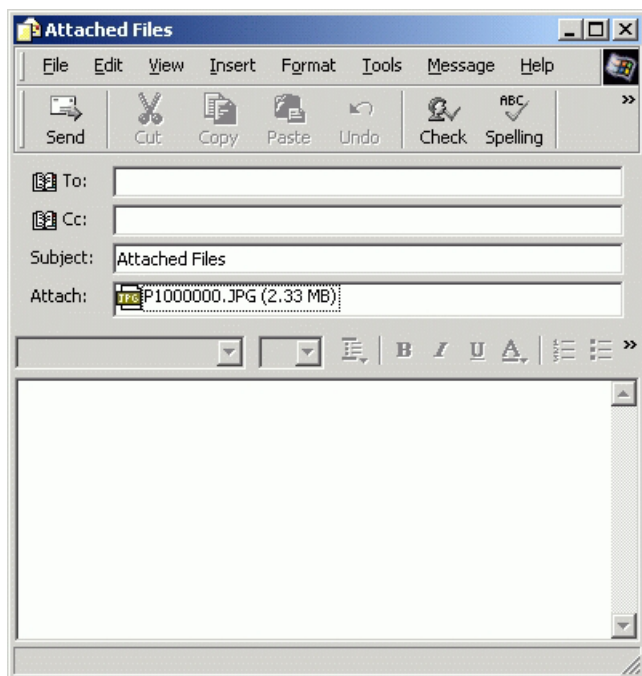


3. Click the **E-mail** button on the *Uniscan e46 Utility*. The image will then be scanned.




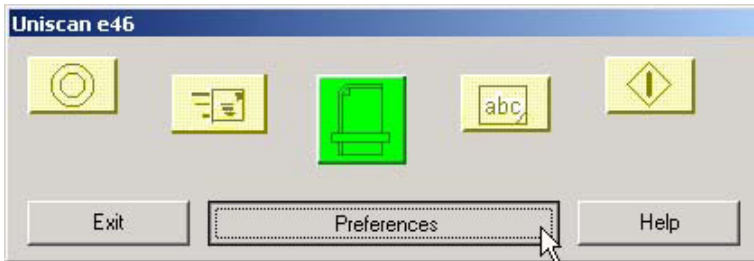
4. After the image is scanned, it is sent to your default e-mail program and attached to a blank e-mail, ready to be addressed and sent. Note that you must wait at least ten seconds for the e-mail program to load.

Using the Uniscan e46 Utility - E-mail Function



Preferences

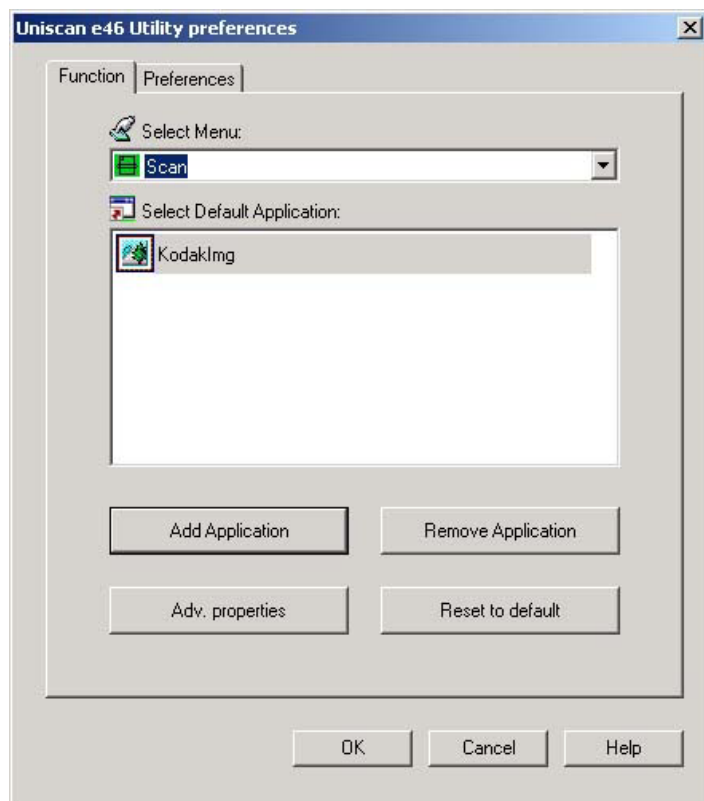
The **Preferences** dialog box enables you to configure the settings for each button and assign applications for post processing. Double-click the scanner icon  in the Windows taskbar to open the *Uniscan e46 Utility*:



Click Preferences to open the *Uniscan e46 Utility* Preferences dialog box:

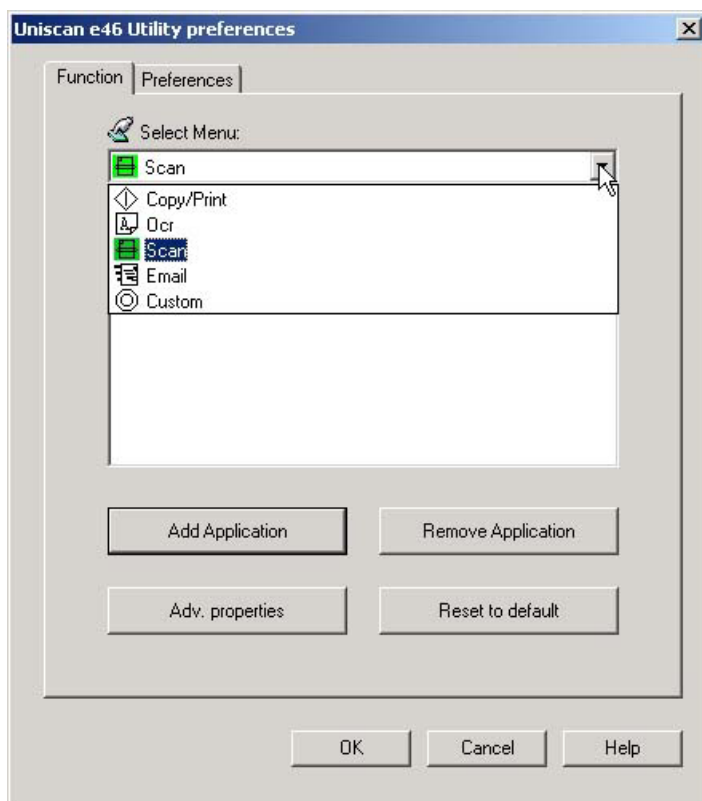
Function Settings

This section explains how to use the options in the *Uniscan e46 Utility* Preferences Function Settings tab.



Select Menu

The Select Menu enables you to choose which button you want to configure and set preferences for. Choose a button from the drop-down menu:



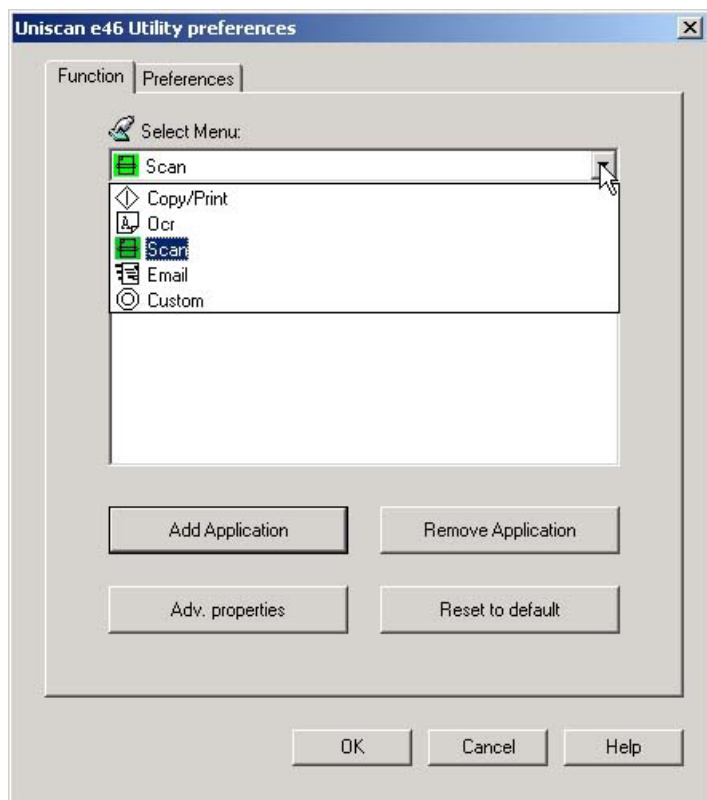
After selecting a button, you can add or remove an application to be associated with it, set advanced properties, or reset the button to the default values.

Add Application

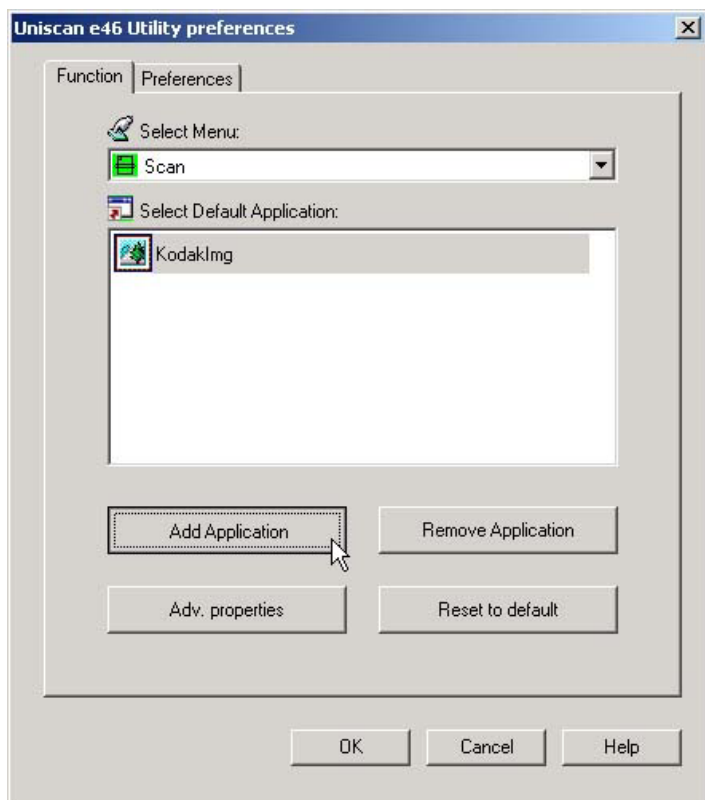
Use **Add Application** to associate an application to a button for post processing scanned images or documents.

1. Select a button from the drop down list.

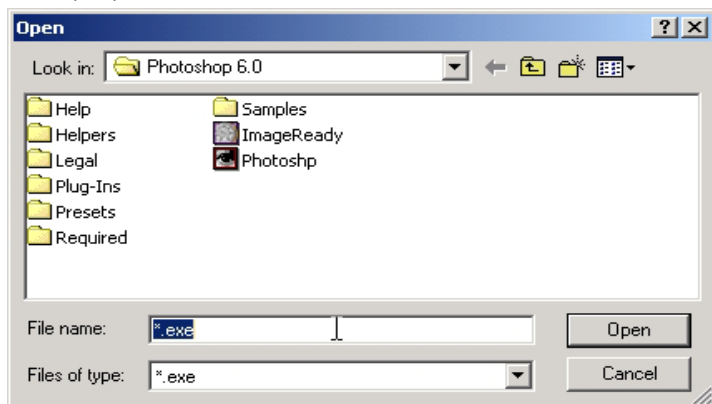
Using the Uniscan e46 Utility - Select Menu



2. The button's default application list is displayed:

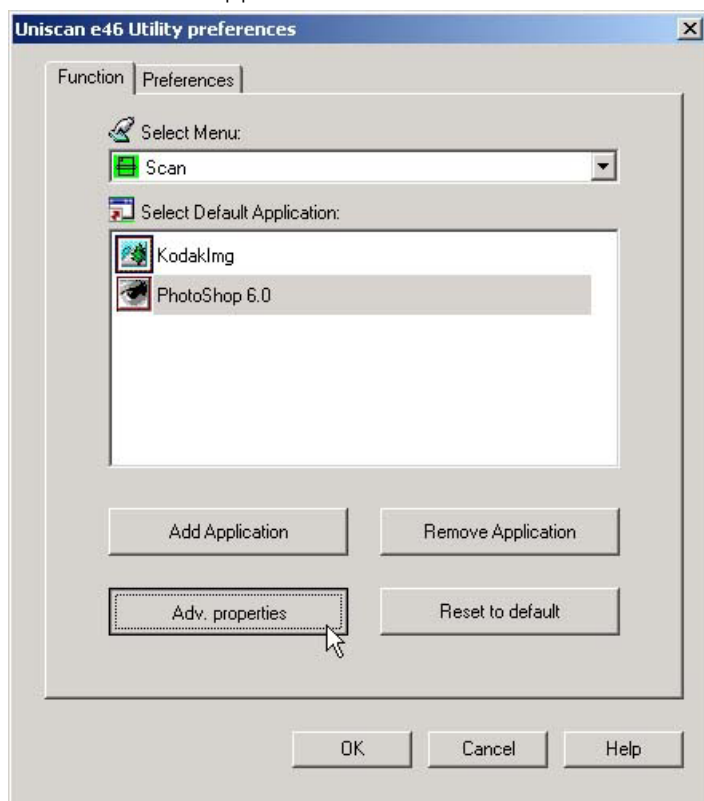


3. Click **Add Application**. The **Open** application dialog box is displayed:

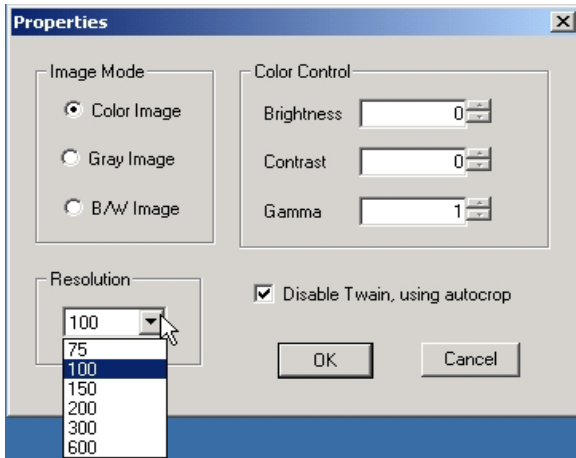


Using the Uniscan e46 Utility - Select Menu

4. Browse to the location of the application that you want associated with the button. Click **Open** to add the application to the default application list:



5. Select the application and click **Adv. Properties**. The **Properties** dialog box is displayed:



The Properties dialog box enables you to set the following items:

- **Image Mode:** select color, gray, or black & white (B/W) for output image mode.
- **Color Control:** enter the brightness, contrast, and gamma in the boxes.
- **Resolution:** select the output resolution from the drop-down menu. You can select a resolution from 75 to 600 dpi.

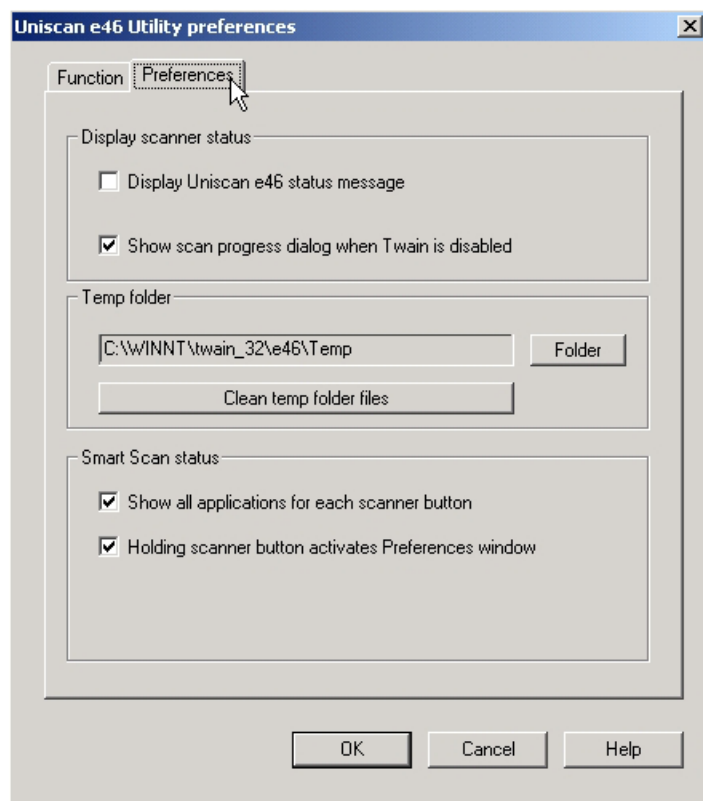
Check the box next to **Disable TWAIN, using autocrop**, to have images scanned directly to the application without being opened in the TWAIN dialog first. The image is automatically cropped before opening in the application.

Click **OK** to save your changes and return to the **Uniscan e46 Utility Preferences** dialog box or click **Cancel** to exit without saving changes.

To remove an application from the button's default application list, select the application and click **Remove Application**. To return the button's application list to the default settings, select the application and click **Reset to default**.

Preference Settings

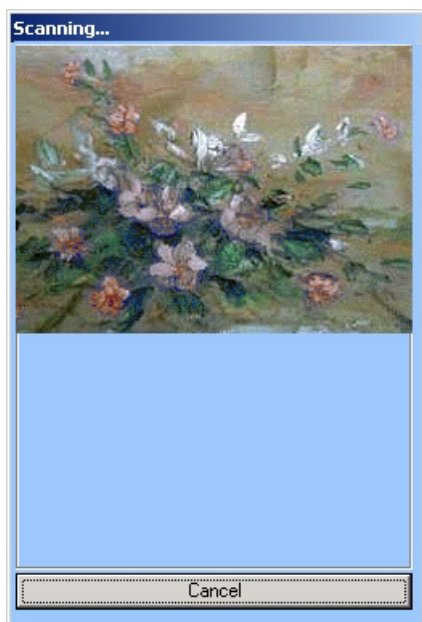
In the *Uniscan e46 Utility* Preferences dialog box, click the Preferences tab to open the following screen:



Display Scanner Status

Display Uniscan e46 status message: click this box to display a *Scanner Activated* message at the top of the Windows desktop:

Show scan progress dialog when TWAIN is disabled: click this box to display a scan progress window when the TWAIN box is disabled.



Temp Folder

This setting enables you to select the folder where image files are stored. Set this folder on a drive with sufficient disk space for large image files. Click **Clean temp folder files** to delete the files in the temp folder.

Smart Scan Status

Show all applications for each scanner button: uncheck this box to display only the applications that were assigned to the button when you installed the software.

Holding scanner button activates Preferences window: if this box is checked, pressing and holding any of the buttons on the scanner will open the *Uniscan e46 Utility* Preference dialog box.

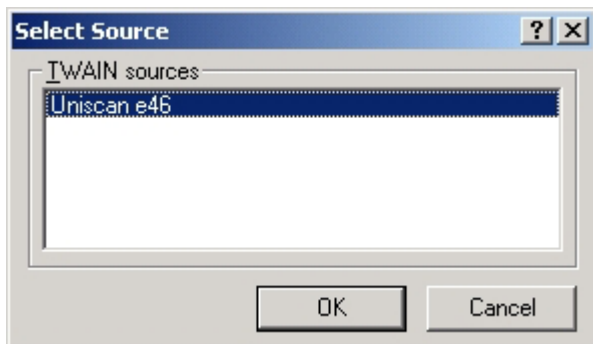
Scanning with TWAIN compliant applications

In addition to the included Presto! PageManager scanning software, the scanner can also be used with any other application that accepts scans via a standard link called TWAIN. Most major scanning and image software programs operate using the TWAIN interface, including MGI PhotoSuite, CorelDraw, lphotoPlus, Painter, PhotoDeluxe, PhotoImpact, PhotoShop, TextBridge, and many more. This chapter discusses how to use the TWAIN interface in detail.

How to Initiate the TWAIN interface

After installing the scanner and associated software, you should be able to find the scanner commands, as follows:

1. From within the TWAIN compliant application, choose **Select Source** in the File menu to show the **Select Source** dialog box. Select "Uniscan e46". Then click **Select** to close the dialog box.

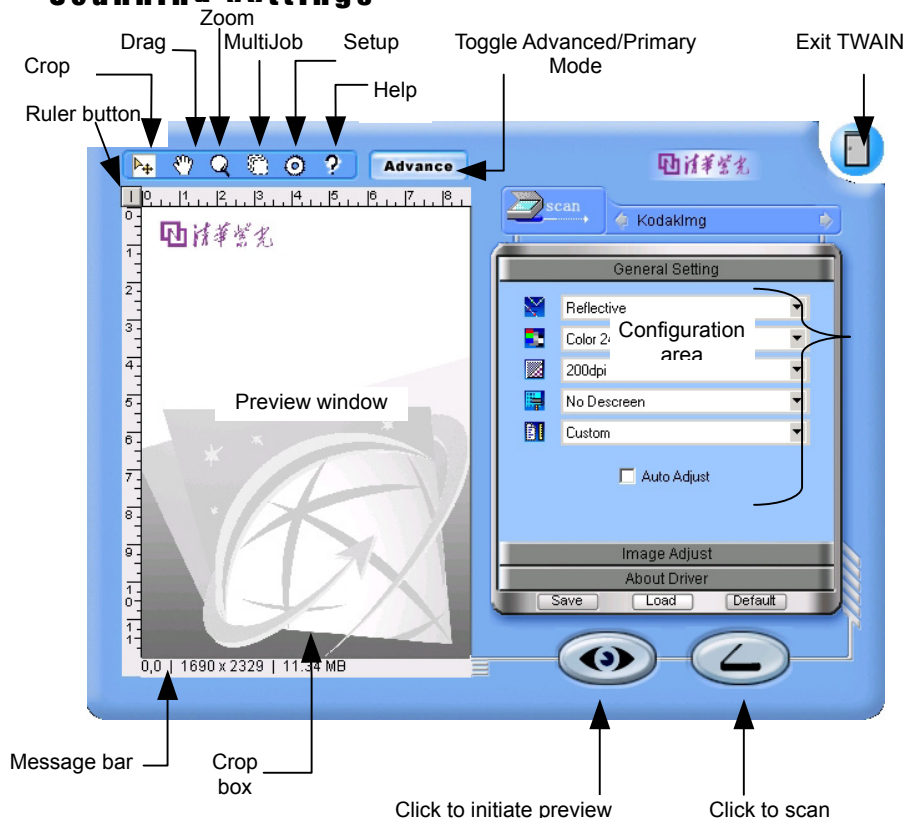


Scanning with TWAIN compliant applications - How to Initiate the TWAIN interface

2. Choose **Acquire** in the **File** menu, and the TWAIN window will open:



Scanning settings



Preview Window

After clicking the preview button, this window shows the document or photo on the scanner glass. You can then view the effects made by changes to the scan settings and define an area to scan: simply drag your mouse to outline the area. You can adjust this area's size by dragging its handles, or its position by clicking on it and dragging. At the top left of the window is a ruler type button; click this to toggle the ruler units between inches, cm, and pixels.

Ruler Button

Clicking on the icon in the top left corner of the preview window allows you to toggle the ruler's measurement units from inches to centimeters or pixels.

Crop

Selects the cropping tool. With this tool selected, click and drag with the left mouse button in the preview window to define the area to be scanned.

Drag

Selects the Drag tool. With this tool selected, click and drag with the left mouse button to move the selection.

Zoom

Zoom in or out by clicking in the preview window.

MultiJob

The **MultiJob** function allows segmenting a scan image into multiple sections, to output to multiple image files. This way, you can scan different sections of the original image into several different output files. For example, using MultiJob, you can create a scan of the entire picture and also each of the four quadrants of the image with one pass of the scanner. The maximum number of mutlijobs is six.

Setup

Opens the Setup dialog box. From this dialog box, you can configure preset scanning icons for one-click scanning from the **Primary** mode.

Help

Opens TWAIN online help.

Message bar

The message bar displays the predicted size of your scan, the current units and the amount of free space on your hard disk. The predicted size changes if you change the scan area size, scan mode and/or resolution. If the image size exceeds the amount of free space, you will not be able to complete the scan. In this case, you can lower the scan mode, resolution or scan area, or create more space on your hard disk.

Toggle Advanced/Primary Mode

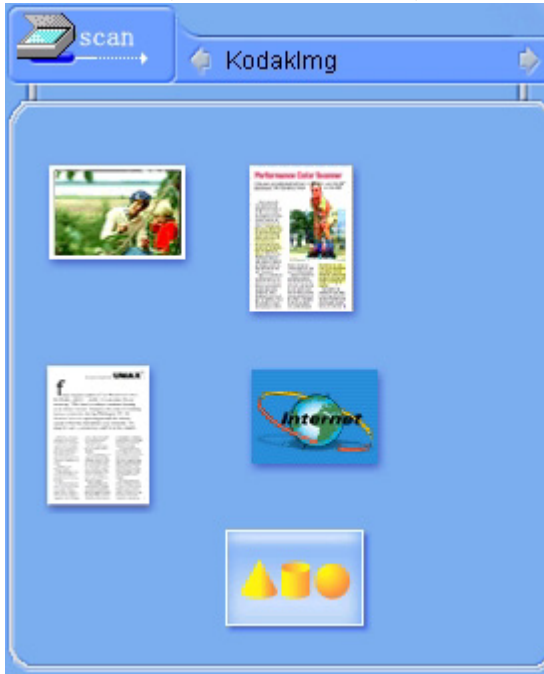
Click the Advance/Primary button to switch between Advanced and Primary modes.

Primary Mode

In Primary mode, you can click one of the five preset icons to scan depending on your desired type of output.

Scanning with TWAIN compliant applications - Scanning settings

The five icons are: Scan Photograph, Scan Magazine, Scan Data for OCR , Scan Photo for Web, and Custom.



Advanced Mode

In Advanced mode, you can set specific settings for this particular scanning instance. See Configuration Area, below, for details.

Configuration area

General Settings



General Settings provides the following general configuration options:

Color Mode

Color Mode determines the amount of color information collected from your original. Choose this option based on whether the original is color or black & white, and on the purpose of your scanned image (i.e., color display, black & white printing, OCR, etc.). Your choice also influences file size; true-color creates the largest files, while grayscale creates smaller files and black & white creates the smallest. When you change this option, notice the projected file size in the message bar: true-color images are three times larger than grayscale and twenty-four times larger than black & white!

Color 48-Bit

Your scanner is capable of scanning images using 48-bit color depth. This provides a more dynamic color and tonal range, giving your scanned images a smoother and more colorful appearance.

The 48-bit color mode is disabled by default because currently only a few application programs (such as Adobe PhotoShop) can accept 48-bit image data. When disabled, your images will be scanned in 24-bit color mode. To scan images in 48-bit color, simply

Configuration area - General Settings

enable 48-bit Color Mode in the **Color Mode** menu.

Color 24-Bit

This color mode collects a large amount of color information from the original, up to around 16.7 million colors! Choose this option for a color original that you want to display, print or edit in color.

Grey 16-Bit and Grey 8-Bit

Use either of these modes for black & white photos or for scanning color material to print on a black & white printer. Choose 8-Bit for lower quality and smaller file size black & white images.

B & W

Use this mode to scan text or line drawings - a picture or text containing black lines only, with no colors or shades of gray.

Resolution

Resolution determines the amount of detail collected from an original. The higher the resolution, the greater the detail. Select a value based on the purpose of your scan. In general, we recommend you keep the resolution as *low as possible*, because the higher the resolution, the slower your scan and the larger the resulting file size. Furthermore, a lower resolution (100-200dpi) when using True Color or Greyscale can capture more color and detail than most printers or monitors can show. When you adjust the resolution, keep an eye on the projected file size in the message bar. The following are suggested settings for various scan file types:

Document Type	Resolution
Text (printed)	300
Text (fax)	200
Text for OCR	300
Black & White or greyscale image	150
Color photo or image	150

100 dpi

For images to display on screen at about the same size as the original in a presentation or on your web page. Also use this for larger images that you will reduce in size to include in a report or presentation and print out on a normal color or black & white printer

(with a print resolution of 300~360dpi).

200 dpi

For small images to display at a larger size on screen, or for any image to be printed out at original size on a color or black & white printer (up to 720dpi print resolution). Also use 200dpi (with black & white scan mode) for clear OCR text (larger than 10pt); for smaller text, use 300dpi.

300 dpi

When quality is critical and a lower resolution is inadequate, choose 300dpi for any size image and for any use (to determine if the resolution is too low, look for squares in the image; see below). Also use 300dpi (with black & white scan mode) for optimum OCR results.

Over 300 dpi

Unless you have a specific reason for selecting a higher resolution, we suggest you do not, as the resulting file size may be very large and take up a lot of your hard disk space. For example, a 3" x 5" photograph scanned at 2400dpi, true-color will result in a file over 240MB in size.

Configuration area - General Settings



72dpi



100dpi



200dpi



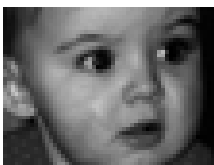
300dpi



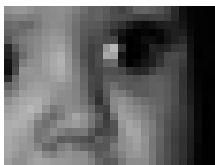
200dpi
(enlarged 2x)



200dpi
(enlarged 3x)



200dpi
(enlarged 4x)



200dpi
(enlarged 8x)



300dpi
(enlarged 2x)



300dpi
(enlarged 3x)



300dpi
(enlarged 4x)



300dpi
(enlarged 8x)

Note: When scanning an image that will result in a file size larger than 25MB, a warning screen will appear giving you the option to cancel.

Descreen

Descreen is used to reduce the effects of Moiré patterns. Although not always obvious, Moiré patterns interfere with the quality of your scanned image. Depending on their severity, they can appear as waves or patterns superimposed over your image, or simply make the image fuzzier. Moiré is a form of interference caused by the imperfect alignment between pixels sent from the video card and the screen. They appear in all color scan displays, and more often affect scans of printed images than text, as well as scans at higher resolutions as compared to those of lower resolutions. Moiré patterns are an inevitable result of scanning, and will not be completely eliminated until significant improvements in monitor

technology can be made. If your scanned image is overlaid with a ripple, wave, dot or other odd pattern, select **Descreen** and scan again to remove this phenomenon and produce a cleaner image.

The scanner scanning in half tone pixels causes moiré, which the screen is not able to display well. **Descreen** operates by replacing half tone pixels with full tone pixels. Use higher levels of Moiré Reduction for objects printed in Matt finish or on plain paper, while lower levels can be used for originals such as gloss finish photographs. A side effect of using the **Descreen** feature is a loss in quality of the scanned image; try different settings until you find a setting that gives the best compromise between quality and clarity.

Scan Size

Choose a Scan Size depending on the size of paper you wish to output to (if output is to be printed). You can also adjust scan size by cropping the image in the preview window, which will set scan size to Custom. You can move the area by dragging the box.

Auto Adjust

The auto adjust function is disabled by default. Select this option to let the scanner automatically determine the size of the item being scanned. When **Auto Adjust** is selected, the scanner makes two passes. The first pass detects the item's size and the second pass scans the item. To enable **Auto Adjust**, simply check the **Auto Adjust** box in the general settings window.

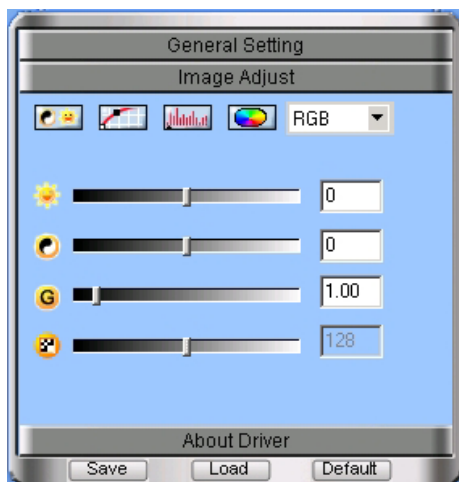
Image Adjust

Image Adjust is used to make specific alterations to the quality and coloration of the output image. When you are satisfied with the adjustments you have made, you can save the configuration for later use by clicking **Save** and selecting a file name and directory. Image Adjust contains 4 option screens: General Adjust, Curves, Level and HSB.

General Adjust

General Adjust allows you to adjust the Brightness, Contrast, Gamma and Sharpness of the output image.

Configuration area - Image Adjust



Brightness

Brightness is a measure, ranging from -100 to 100, of the relative lightness or darkness of the image. Increasing the brightness will bleach the scanning image, while decreasing it will result in a darker final image. Move the slider to adjust the brightness of the overall image or the selected color.

Contrast

The higher the Contrast, the clearer the image, while lower Contrast results in blurry images. Increasing the Contrast decreases the mid-range hues, and increases the high and low hues. Generally, adjusting Contrast is used to eliminate spots and shadows from scanned black & white or greyscale images, or to "clean" color images. Move the slider to adjust the Contrast of the overall image or the selected color. This function is not suitable for line drawings or other pure black & white images.

Gamma

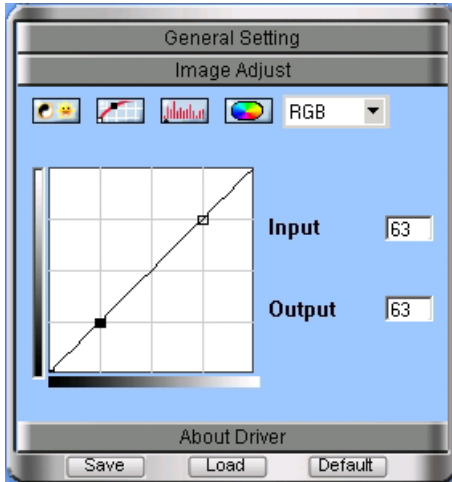
Moving the **Gamma** slider will affect the colors in your image as seen on the monitor. Although the default Gamma setting is ideal for most scans, the computer does not always receive the precise color information from the scanning hardware, and some distortion in color may occur. Through altering the gamma of either the overall image or the selected color, you can achieve the exact coloration you desire.

Sharpness

Move the slider to make the image sharper or fuzzier.

Curves

Select Curves to display the red, green, or blue color curve. The mixed color will be displayed in black.

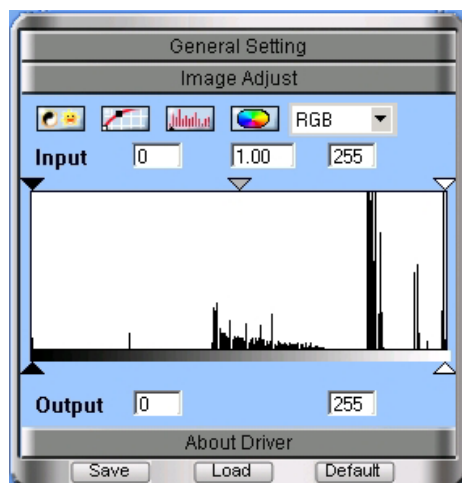


Note: changing the color curve will affect the results of all scanner output.

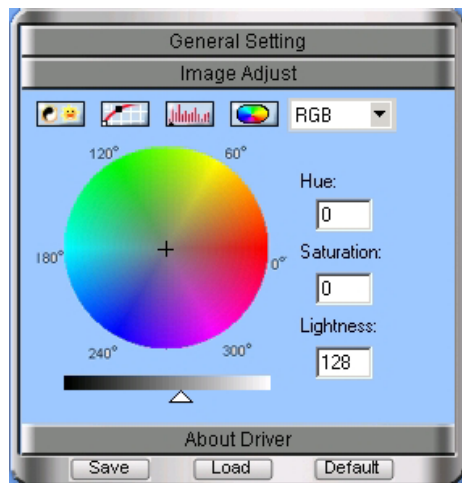
Level

Level displays a histogram of the distribution of red, green, blue, grayscale, hue, saturation, and/or lightness values in an image. The horizontal axis represents the lightness values of the image from black to white (0 to 255). The vertical axis indicates the number of pixels at each value. At a lightness level where there are many pixels of one of the values, the corresponding line spikes; where there are few pixels, it appears close to the horizontal axis. In dark images, most of the pixels are grouped at the left side. If an image is too light, the pixels are grouped at the right.

Configuration area - Image Adjust



HSB (Hue, Saturation and Brightness)



Saturation is the intensity or purity of the colors displayed in the image. The intensity of the color refers to the color's distance from the shade of gray; a value of -100 represents gray, while a value of 100 represents the most intense color.

Hue indicates a color's position on the standard color wheel. At a value of 0, the colors stay true to the original image. Changing hue rotates the color's position by the appropriate number of degrees along the color wheel. For example, selecting a hue value of -30

Configuration area - Tips for correcting scanned images

rotates the color's position 30 degrees, while a hue value of 30 represents a clockwise rotation of 30 degrees. Obviously, the greatest hue values are -180 and 180, which changes all the image's colors to the exact opposite colors according to the color wheel.

Brightness is a measure, ranging from -100 to 100, of the relative lightness or darkness of the image. Increasing the brightness will bleach the scanning image, while decreasing it will result in a darker final image. Move the slider to adjust the brightness of the overall image or the selected color.

Tips for correcting scanned images

The above options are for advanced users and users already familiar with image editing tools. We strongly recommend that beginners do not use these tools until they have become familiar with the scanner and the technical terminology related to image creation. Many image editing software applications also include these functions. If you must adjust image color levels, please choose the appropriate options before you begin adjusting. Below are a few practical tips for your reference.

Also known as tone correction commands, these settings adjust images as they are scanned. For example, you may have a photo that is over-exposed (too light); you can thus decrease the brightness or color correction to darken the photo. Contrast makes the difference between dark and light areas more or less obvious. Increasing it increases the difference, while decreasing it reduces the difference. Try small changes at first and view the effect.

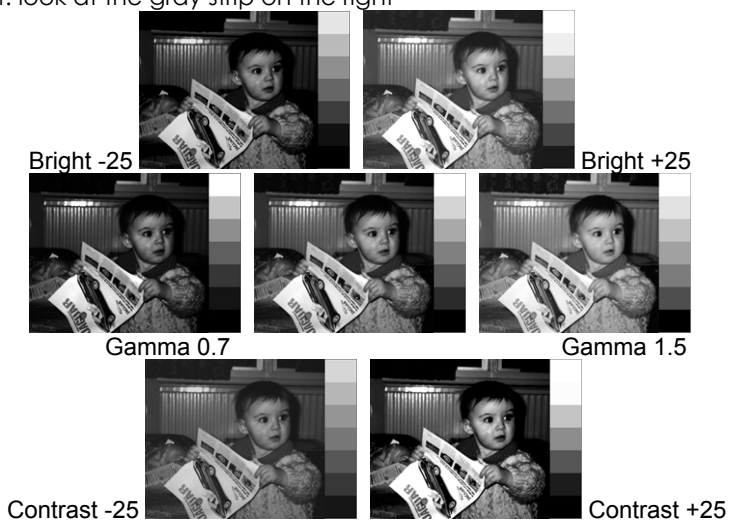
Experimentation is the best route to good results. However, for most photos and documents, you will not need to adjust these values.

The color correction control also allows you to adjust the gamma. If you have an "off-color" original, for example one in which skin tones are a little green, try reducing green gamma and/or increasing red gamma. Gamma may be adjusted either by increasing/reducing the gamma of the color, or by reducing/increasing its complementary colors.

After previewing your scan, changes made to these settings are reflected in the preview window. Making changes in this way allows you to experiment without having to scan again to check the results every time.

Configuration area - Tips for correcting scanned images

Hint: look at the gray strip on the right



Scanning night shots*

If you have particularly dark photos (that are correctly exposed) try increasing the gamma a little (maybe up to 1.4) to bring out details in the shadowed areas without affecting the overall tonal range in the image.

Scanning snow shots*

For very light photos, for example from a skiing trip in bright sunlight, reduce the gamma (maybe down to 0.8) to bring out details in the bright areas. This again does not affect the overall tonal range in the image.

- If you use brightness or contrast in the above two cases, you actually reduce the amount of information collected from the original, while gamma collects more information in the darker or lighter areas, and less in the opposite type of area.

Scanning text for OCR

If your OCR result is not satisfactory, it may be because the original is unclear. First, adjust the brightness. Try -10 for bolder text, for lighter, try +10. With this you can increase the contrast slightly for bolder text or decrease the contrast for lighter text.

Scanning line art drawings

If parts of lines fade out after scanning, you can reduce the brightness and/or decrease the contrast in much the same way as for scanning text. Similarly, if you find that scanned lines appear bolder (fatter), reduce the brightness and/or increase the contrast.

Troubleshooting

This section provides information on maintaining the scanner and answers questions to help you solve problems you might encounter when using it. If you continue to experience problems, or if the problem is not covered in this guide, please contact your local dealer.

Problems with connections

Scanner does not respond.

- Make sure all connections are secure and correct.
- Restart the computer and try again.
- Reinstall the software, restart your computer and then try again.
- Check that the Universal Serial Bus of your computer is Enabled. This setting (Universal Serial Bus Controller) can be found under the System option in your Control Panel in the Device Manager (if in doubt, check Windows Help).

Problems during installation

Setup wizard does not autostart.

- Check your computer system to see if Autostart is available.
- Under Windows, check if your CD-ROM is set to Auto Insert Notification. This setting can be found under the System option in your Control Panel in the properties of your particular CD-ROM model (if in doubt, check Windows Help).

Cannot find program icons after restarting the computer.

- If program icons do not appear in the Start menu under Programs, try reinstalling.

Setup wizard crashes during installation.

- Reinstall the software.

Other problems with the scanner

The scanner's scanning lamp does not light up.

- Make sure the TWAIN window appears on screen. If not, reselect the TWAIN source and activate the TWAIN interface again.
- Make sure all connections are secure and correct.

Scanner scans very slowly.

- Make sure the resolution of the scanner is not set too high (preferably 300 dpi or lower).

- Check your connections (see [Problems with connections](#) above).

Error: Scanner not found.

Displayed if there is a problem communicating with the scanner. This may be caused by a power outage, misconnection or an installation problem. First check your connections and check that your wall socket and power switches are all turned on. Next check the following:

(1) USB setting is enabled. (2) Power adapter is plugged into the scanner connector. (3) USB cable is properly connected from the scanner to your PC.

Problems in TWAIN

The TWAIN window does not appear after choosing Acquire.

- Make sure all connections are secure and correct.
- Check that the scanner is selected in the Select Source dialog box.
- Reinstall the software.
- Check your connections (see [Problems with connections](#) above).

Unable to scan to application software.

- Check that the scanner is selected in the Select Source dialog box.
- Make sure all connections are secure and correct.
- Close all open programs and Windows, restart your computer and try again.

Problems with the scan

The scanned image is too light or too dark.

- Check if the Scan Window is clean.
- Adjust the brightness or color gamma settings and try again.

Moiré patterns appear on the scanned image.

- The original image is commercially printed. Try reducing the resolution by a small amount, for example from 200 dpi to 190 dpi; keep reducing until the patterns disappear. Or you may check **Descreen** under the **Advanced** tab in the TWAIN interface.

Transitions in color are very abrupt (after scanning in true color mode).

- This is normal if you are using a display mode that can only display 256 or 16 colors. Try using a high- or true-color mode instead. Refer to the Windows Manual and your display card guide for more information.