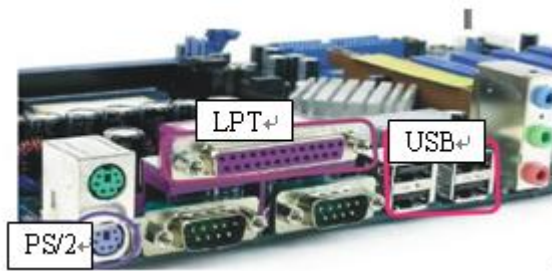


76 POS printer driver installation instructions

- 1 OS Support: Windows 2000\ Windows XP\Windows 2003\ Windows Vista\WIN7
- 2 Interface: USB ,LPT
- 3 Before installation, please confirm computer on the following interface:



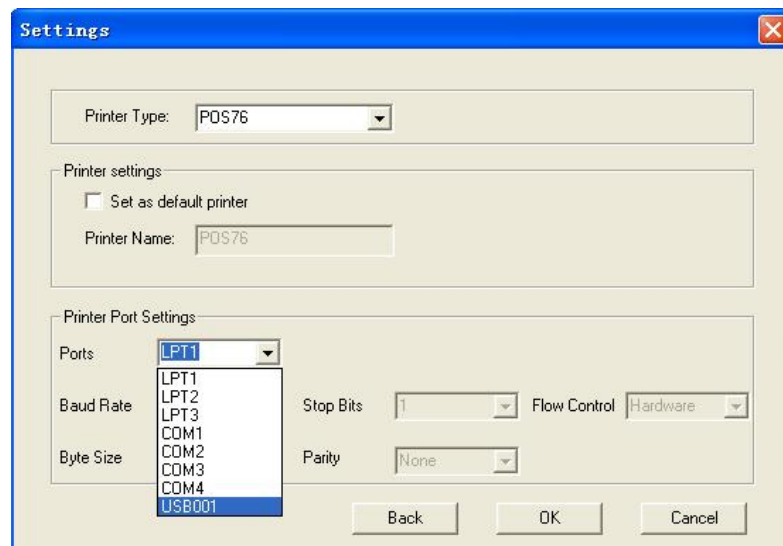
4 Steps

4.1 Put driver CD into computer CD-ROM

4.4 Double click "76 mm dot-matrix driver procedure" after opening, Double click

4.3 Select language—click “next”—click “I accept the agreement”—click “next”—click “install”—click “select operating system”—click “next”— setting--Select port


Note: If the following occurs



Select the correct interface you need Then click "ok ",waiting a few seconds



Click "Finish". Printer driver installed successfully

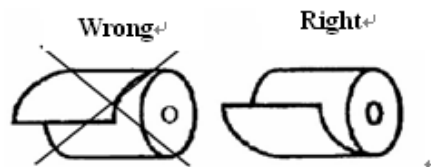
- 4.4 Port Setting:** Right-click the printer after installation is completed, Select “properties” —port —Choose corresponding port according to the current connection of the data, if it is a LPT interface printer, print a test page without setting, if it is a USB interface printer, Click the start menu to find printer and faxes, find the printer icon and then click the port ,select the USB port, click apply and then click test page
- 5** If you print out the receipt with more or less blank lines, please set in the driver, click ”start”, find “printers and faxes” and open, find  ,Open the "Device Settings", set the parameter in the blank line number after printing.. If you need to test the cash drawer in the drive, you can also be set in same way, and select “open XX cash drawer before printing” in cash drawer option.

Common problems and solutions

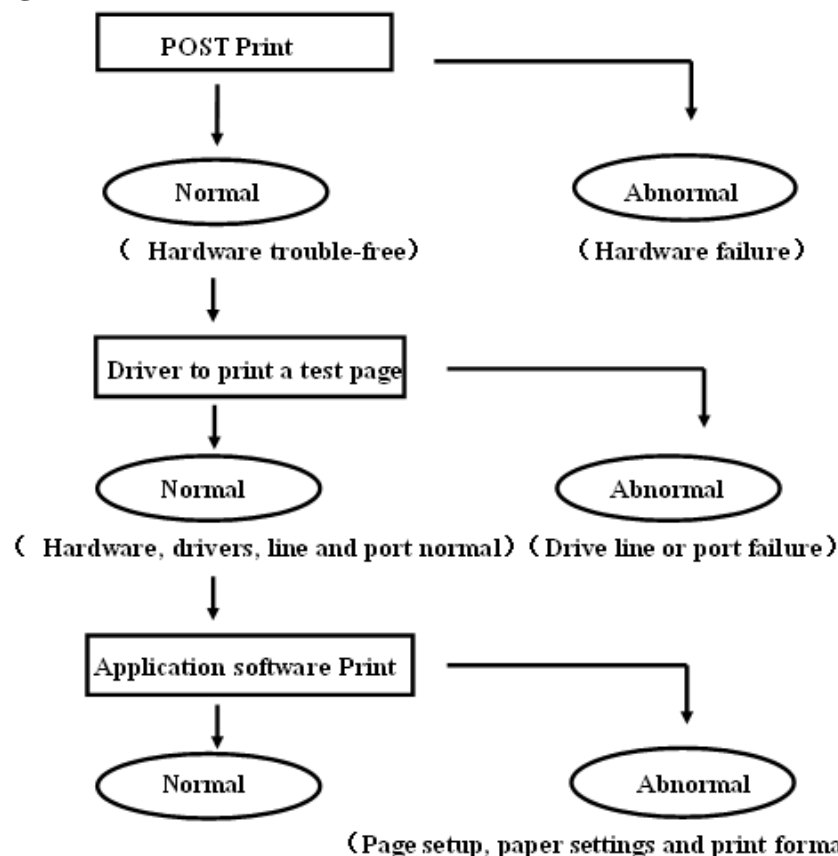
1 Printing blank page:

1.1 The first league printing blank page, confirm whether pack the ribbon, if forget, The installation ribbon methods reference CD-ROM video data

1.2 Copy league print blank page , user should check if the paper installation is correct, see below:



- 2** Don't suck paper: confirm machines have electricity, check error indicator (paper out) whether flashes, if it blinks, you can load paper, if not, please restart ,confirm indicator blinks and then load paper The installation rolls methods reference CD-ROM video data
- 3** He roll paper jam: check if the paper output is in the center of the outlet. If the paper is on the left or right side, re install the paper to solve the problem.
- 4** The flowchart to figure out the root cause:



- 5 Self-test printing test during startup: Press and hold the paper feed button, then power on the printer. Release the paper after you hear a “beep sound. Then the printer start self-test printing. If it works, the print hardware is working normally.**
- 6 Drivers test page printing: open the driver, select test print in normal. In this case, if it print successfully, it means the driver installation, driver setting cable and port are correct. If it fails the print please check the port setting. If the print error is still there, please replace the cable or change the computer port, and confirm the printing again.**
- 7 Application software printing test: if startup self-test and driver test are successful, and the printing fails in application software, please check the application software setting, such as print setting, page setting and print format setting**