

Uniscan Scanner F22A

User Manual



Copyright

This handbook work artificial Unisplendour Corporation Limited Company. The author enjoys and retains all works according to the People's Republic of China copyright law, The power exclusive right, non- beforehand agreed after the author that, does not have or is engaged in the additions and deletions, the reorganization, transcribing completely on this handbook part, pirate or imitation behavior.

Trademark

In this handbook mentions the trademark and the software product range possesses completely for its respective company.

Responsibility declaration

This handbook content, was showing only the author produces the manufacture the colored scanner application method. Related this handbook content, author not Takes any guarantee or the obligation of warranty. This handbook although after the careful inspection and proofreading, still possibly had the writing mistake and the technical description oversight situation, requested earnestly the user and the colleague liberal with Grants instruction points out mistakes, by favors this handbook the revision, makes every effort the handbook content the accuracy. In this handbook contains the content like has the change, not separate informs even slightly.

Table of Contents

Copyright Explain:

Set up your scanner

Set up show and open package	1
What's in the box	1

Installation

Step 1: Install the Software	1
Step 2: Power on the scanner and connect the USB cable to your computer	4

Operating the scanner and Maintenance

Testing the scanner	6
Scan the paper document	7
Use ADF module scan	8
Maintenance	8

Setting Scanner Button

Scan to file	11
Scan to App.	12
Scan to Fax.	13
OCR.	14
Copy	15
Scan to E-mail.	16
Setting.	17

TWAIN Interface

Simple Mode	18
Advanced Mode	21

Set up your scanner

Welcome

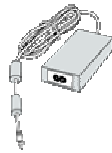
Congratulations on the purchase of your Uniscan F22A scanner. The scanner adopts the advanced technology that uses the LED as the light, so it can warm up quickly, meanwhile, it save the source energy and helpful to environment. With this scanner you can quickly scan paper documents, color photos, To use ADF module to scan multi-page document (thickness 5 millimeter) or length 5 meter document and will save the multi-page document turn into a document. And automatic identify the scanned writing chart files transfer to the writing edition the documents. (See scan to file and OCR section)

What's in the box

Before proceeding, check the contents of the box. If items are missing or damaged, contact the dealer where you purchased the scanner.



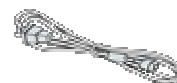
Uniscan scanner F22A



Power Adapter



USB Cable



Power Cable



Installation CD



**Quick install guide
User Manual**



**Cleaning Paper
Package List**



**Warranty Card
Certificate of Quality**

Installation

Installation is a quick, two-step process:

1. Install the software and connect ADF interface to Flatbed body correctly.
2. Power on the scanner and connect the USB cable to your computer.

Step 1: Install the Software

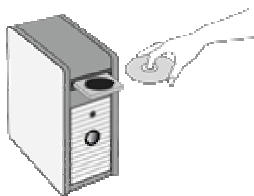
To install the software:

1. Start Microsoft Windows and make sure no other applications are running.
2. Insert the installation CD into your computer's CD-ROM drive.

(Note: This Installation CD support CD-ROM, DVD-ROM and other Compatible CD-ROM)

NOTE: You must install the software before connecting the scanner to the computer.

Otherwise the scanner and soft ware may not run correctly.



The CD automatically starts.

NOTE: If your computer CD-ROM can't run automatically, please install as following:

1. Click "START" from taskbar, select "RUN"
2. Key in "DRIVE:\ SETUP.EXE", DRIVE is drive letter assigned to the CD-ROM of your computer, such as "E". Press "ENTER", the installing interface will display. You can install the Setup/Application driver according to the on-screen instruction.
3. Click on the "Setup/Application Driver " Button, the system start to prepare for installing the process. After the interface "Welcome to the Install Shield Wizard for UNISCAN F22A" is displayed, click on the "NEXT" button.



4. After ensuring to install, click on “INSTALL”, the system will install the Setup/Application CD. When the system completes the installation, click on the “FINISH” button.





ATTENTION: Install the Setup/Application Driver first, and then connect the scanner to your computer.

Step 2: Power on the scanner and connect the USB cable to your computer

Your Uniscan scanner F22A connects to any available USB 1.1 port or USB 2.0 port.

1. Slide the locking tab on the scanner to its unlocked position.



2. Make sure that the ADF cable is securely plugged into the Option port on the back of the scanner.



ADF Connect Line



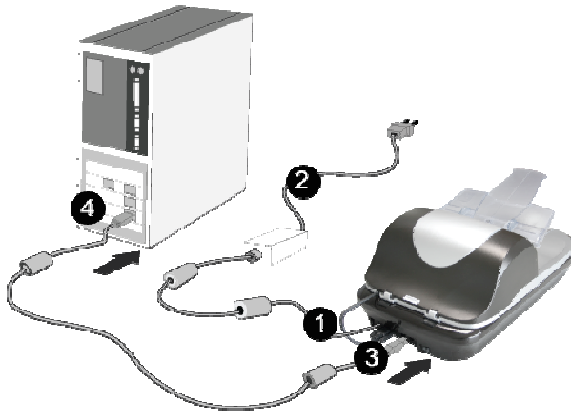
Connect Interface



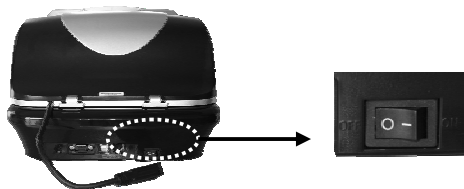
Plug the ADF cable into option port.

Note: If the ADF don't plug into scanner's option port don't means it is used.

3. Plug one side of the power adapter into the scanner's power receptor; plug two sides of power cable into power adapter and power outlet, plug one side of supplied USB cable to USB port at the rear of the scanner, plug the other side to the free USB port on the back of your computer.



4. Turn on the power switch on the back of your scanner.



(Note: “O” position means turn-off electric, “—” position means turn-on electric)

The green status light on the left front of the scanner is illuminated, indicating the scanner is receiving electric.

Operating the scanner and Maintenance

You can use several different methods to scan from your scanner:

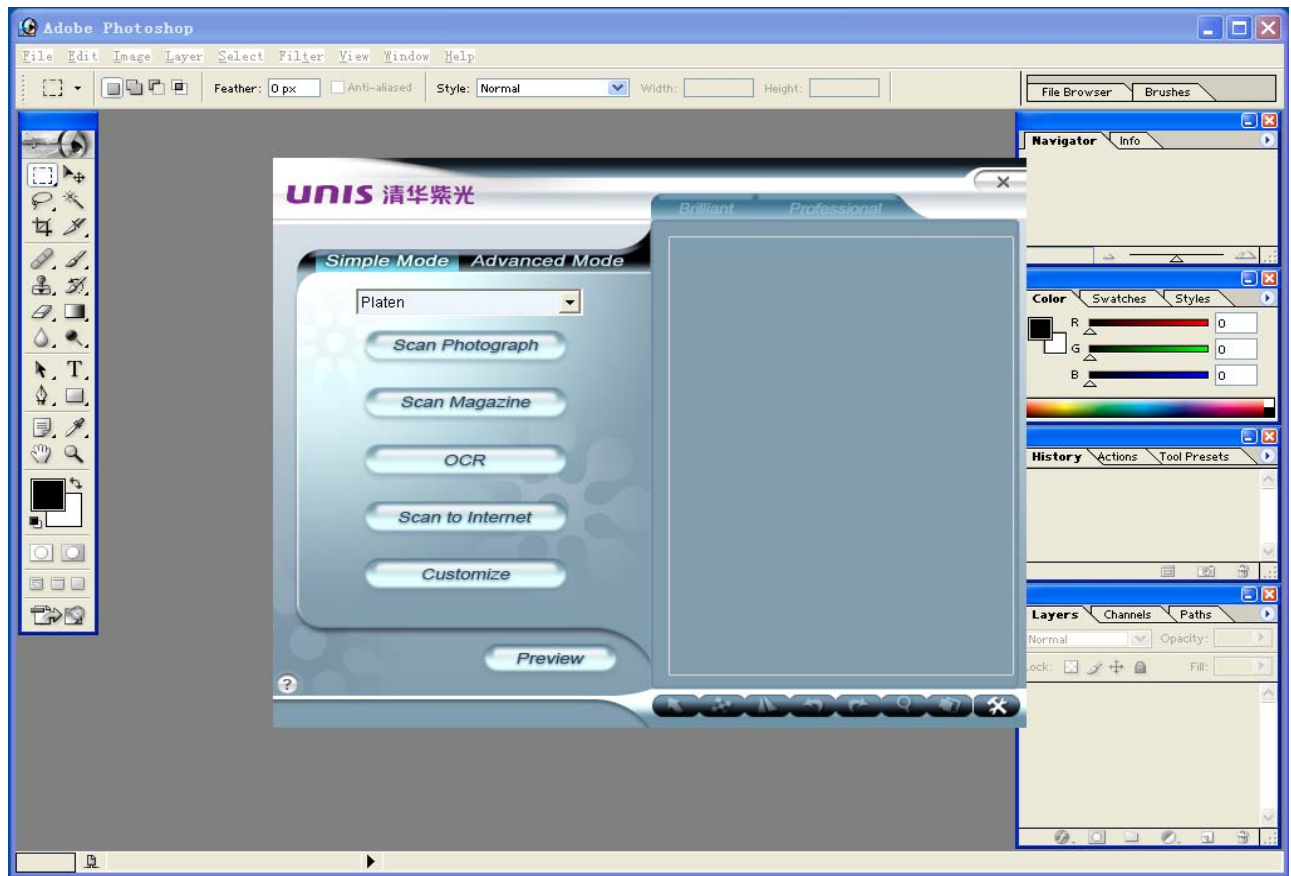
- Press a Hot Key button on the scanner.
- Click a button icon on the on-screen F22A Smart panel.
- Use the Basic Interface or Advanced Interface window from the TWAIN software.

Testing the scanner

The following test procedure checks to see if the scanner is properly functioning with your computer and the scanning software. Before testing your scanner, double check to make sure that all connections are securely fastened.

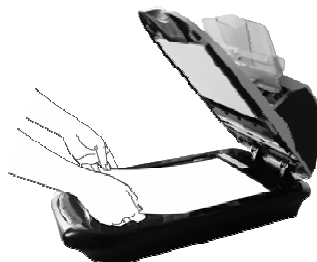
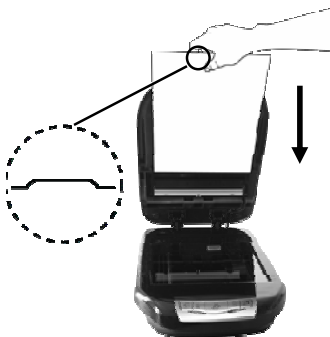
To properly test your scanner, please perform the following steps:

1. Open the scanner's document cover and place a picture onto the scanner glass face-down.
2. Gently close the document cover.
3. Open the scanner's image-editing program; click on following options.
4. **START/PROGRAM/ADOBE PHOTOSHOP** (or other image-editing program).
5. When Adobe Photoshop opens, click on **FILE/ INPUT/ UNISCAN F22A**.
6. Then TWAIN open.
7. If an image appears on your screen (as shown), your scanner is working properly.



Scan Paper Documents

1. Place the item face down on the glass. Align the edge of the item with the arrow at the upper-right corner of the glass.



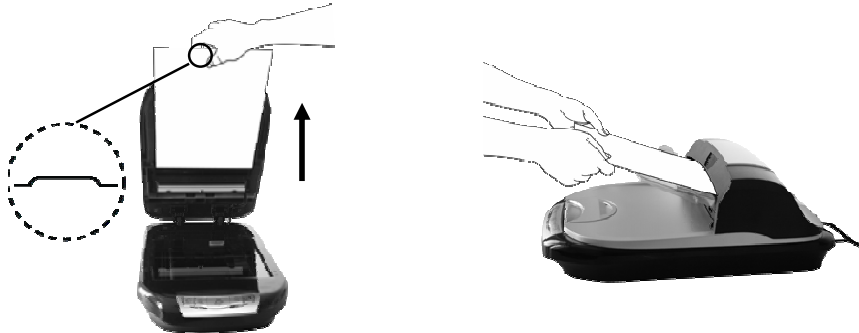
2. Make sure to insert white cover plate correctly position, Close the document cover and press one of F22A Smart panel buttons
3. The F22A Smart panel interface will appear automatically, then follow the instruction of Part 4 to do the setting.

Scan with ADF module

Your Uniscan scanner F22A is specially designed to scan document with ADF module. You can scan multi-page document (thickness 5millimeter) or length 5meter document.

To scan document with ADF module

1. Open the scanner's document cover and carefully remove the white cover plate.



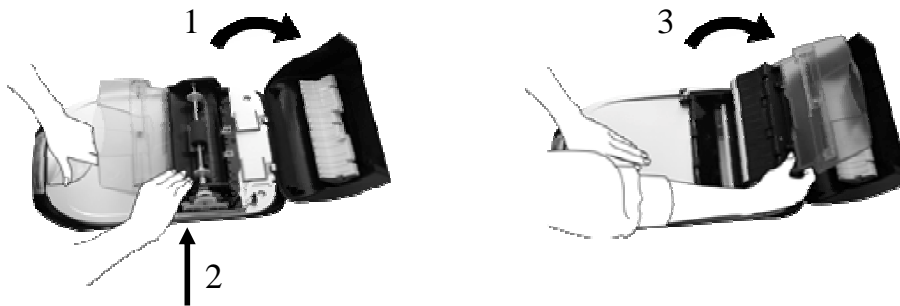
2. Close the cover and place the document face up on paper tray. Adjust paper guide fixed paper position.
3. Press the scan button on scanner.
4. Or open image software, example: Photoshop. File—>Import —>select Uinscan F22A, pop-up UI interface. Click scan button to start scan. User could use advanced or simple mode to scan.

Maintenance

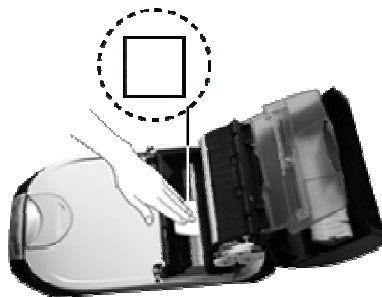
To keep your scanner working smoothly, take a moment to review the following maintenance tips:

- Please firstly link ADF module interface with scan body correctly. Then turn on power.
- Avoid using the scanner in a dusty environment. When it is not in use, keep the scanner covered. Dust particles and other foreign objects may damage the unit.
- If use ADF module scan, image have vertical line, please clean dirt on ADF module glass to use cleaning paper with package. As below show:
 1. To grasp ADF top cover, As arrow 1 show, Gently force to open the ADF module.

2. To grasp ADF module two side. As arrow 2 show, open ADF upper module.



3. To use cleaning paper as below show, clean dirt on ADF module glass, then close ADF module reference open sequence.



- Do not attempt to disassemble the scanner. There is danger of an electrical shock and opening your scanner will void your warranty.
- Do not subject the scanner to excessive vibration. It may damage the internal components.
- Be sure not to bump or knock the scanner glass as it is fragile and could break.
- Clean the scanner glass by lightly spraying a non-abrasive glass cleaner onto a soft lint-free cloth. Then, wipe the glass thoroughly with the cloth. Do not spray cleaner directly onto the scanner glass. Excess liquid residue may fog or damage the scanner.
- Your scanner is allowed to operate in temperatures between 5°C and 35°C, the best temperature to operate is 25°C.

Setting Scanner Buttons

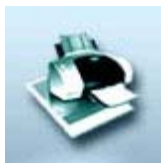
Before setting, please ensure the Smart panel icon is on your computer screen or not. When you install the Driver, the icon will display on the desktop. If not, Please follow these steps to acquire Smart panel Program: Click Windows START/ PROGRAM/ F22A/Smartpanel
Double-click Smart panel icon, Smart panel window appear:



Scan to AP



Copy



Scan to Fax



Scan to Mail



Scan to File



OCR



Setting

Click "Setting" button, the following interface appear. Click the icon on the left to make the setting.

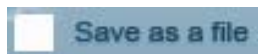
Scan to file



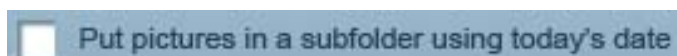
1. Select source: Choose Platen and ADF



2. Scan mode: Tell your scanner what kind of mode you want to scan, there are three modes Color, Gray, B/W for your choice.
3. Resolution: Choose the resolution of scanned image. There are following items to choose: 75,100,150,200,300,400,600dpi.
4. Paper size: The scan size is defaulted as A4.
5. You can save the file name and choose save type, too.
6. When use ADF to scan multi-page document, select image save as type: Gif or Pdf. Please tick in following frame „The multi-document will been saved a document.



7. If you want save the picture a subfolder using today's date automatically, Please tick in following frame:



(Note: Compression Level is effective with the saving the image by “jpg”,the value is range from 0 -100)

Scan to Application



1. Select source: Choose scanner you want to use.
2. Scan mode: Tell your scanner what kind of mode you want to scan, there are three modes Color, Gray, B/W for your choice.
3. Resolution: Choose the resolution of scanned image. There are following items to choose: 75,100,150,200,300,400,600dpi.
4. Paper size: The scan size is defaulted as A4.
5. You can save the file name and choose save type, too.
6. If you want to open scanned image to use other application program, please click “Set”.

Link scanned images to : C:\WINDOWS\system32\mspaint.exe

Scan to Fax



1. Select source: Choose scanner you want to use.
2. Scan mode: Tell your scanner what kind of mode you want to scan, there are three modes Color, Gray, B/W for your choice.
3. Resolution: Choose the resolution of scanned image. There are following items to choose: 75,100,150,200,300,400,600dpi.
4. Paper size: The scan size is defaulted as A4.
5. You can save the file name and choose save type, too.

(Note: You can use Fax function after Modem is installed)

OCR



1. Select source: Choose scanner you want to use.
2. Scan mode: Tell your scanner what kind of mode you want to scan, there are three modes Color, Gray, B/W for your choice.
3. Resolution: Choose the resolution of scanned image. There are following items to choose: 75,100,150,200,300,400,600dpi.
4. Paper size: The scan size is defaulted as A4.
5. You can save the file name and choose save type, too.
(Note: You can use OCR function after it is installed)

Copy



1. Select source: Choose scanner you want to use.
2. Scan mode: Tell your scanner what kind of mode you want to scan, there are three modes
3. Resolution: Choose the resolution of scanned image. There are following items to choose:
75,100,150,200,300,400,600dpi.
4. Paper size: The scan size is defaulted as A4.
5. Brightness: Move the slider to adjust the brightness of the overall image or the selected color.
6. Scale: You can tick "Fit to paper" or "100%" scale based on your choice.
7. You can choose copy numbers, printer, printer quality and printer mode in this interface, too.

Scan to E-mail



The screenshot shows a software window titled "UNIS 清华紫光" with a close button (X) in the top right corner. The main area contains the following elements:

- A message: "[Mail] Attach the scanned image to an E-mail messgae in your mail software" (note the typo 'messgae'). To the right is a "Scan" button.
- A section titled "Scanner settings" with four dropdown menus:
 - "Select source" set to "Platen".
 - "Scan mode" set to "Color".
 - "Image quality" set to "100 dpi".
 - "Paper size" set to "A4(8.5x11.69in)".
- A section titled "Save scanned image to" with:
 - "File name" set to "Email".
 - "Save as type" set to "Jpg".
 - "Set path" set to "C:\\".
 - A "Browse" button next to the path field.
 - An unchecked checkbox labeled "Put pictures in a subfolder using today's date".
- At the bottom are three buttons: "Default", "Apply", and "Cancel".

1. Select source: Choose scanner you want to use.
2. Scan mode: Tell your scanner what kind of mode you want to scan, there are three modes Color, Gray, B/W for your choice.
3. Resolution: Choose the resolution of scanned image. There are following items to choose: 75,100,150,200,300,400,600dpi.
4. Paper size: The scan size is defaulted as A4.
5. You can save the file name and choose save type, too.

Setting



In this interface, you can link all the buttons. Click Mail menu, eight items appear: E-Mail, File, Application1, Application2, Copy, OCR, Fax, Setting. When choose Fax item and press **E-Mail** button on this interface, **【Fax】** interface will appear, you can do more setting on this interface, then press **Scan** Button on Smart panel, you can send the scanned image by fax. As the same, click OCR menu, you can choose any item. If you choose Application and press **OCR** button, **【Application】** interface will appear. On the analogy of Setting interface, you can use Mail, File, Application, Copy, OCR, Fax and Setting eight functions with five buttons on the scanner.

TWAIN Interface

You can use software included in CD or TWAIN Interface to scan. TWAIN program allows you to adjust a number of settings to define the quality of the scanned image. The following chapter describes the TWAIN interface, which automatically opens when you acquire from image-editing application.

The TWAIN program of this scanner has two modes—Primary Mode and Advance Mode.

Primary Mode



Brilliant, make the image looks vivid.

Professional, make the image looks truthful.

Toolbar



Select

With this tool selected, click and drag with the left mouse button in the preview window to select the area to be scanned.



Move

With this tool selected, click and drag with the left mouse button to move the selection.



Flip

With this tool selected, you can flip the scanned image around the central vertical axis.



Rotate-L

With this tool selected, it will rotate the scanned image 90 degree counter-clockwise.



Rotate-R

With this tool selected, it will rotate the scanned image 90 degree clockwise.



Zoom

Zoom in by clicking the left mouse button in the preview window; at most it can zoom in four times.



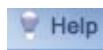
Multiple

With this tool selected, you can choose several scan areas to scan, and adjust Color Mode, Resolution, Descreen etc., to each area. At most, it can support eight scan areas when scanning platen.



Setting

Opens the Setting dialog box. From this dialog box, you can configure preset scanning icons for one-click scanning from the Primary mode.



Help

Open TWAIN online help.

In Primary mode, there is a frame for you to choose to scan in following mode:

Platen: Use this setting to scan normal sheets of paper or any non-transparency material

Platen

If you choose Platen, you can click one of the five preset icons to scan depending on your desired type of output.

The five icons are: Scan Photograph, Scan Magazine, Scan to OCR, Scan to Internet and Custom Scan.



Preview button. Clicking this button, you can review the image in Preview Window, so that you can change the scan area and foresee the image.

2. Advanced Mode

In Advanced mode, you can set specific settings for this particular scanning instance.



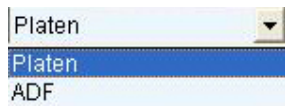
Windows

Windows provides the following general configuration options:



Select Source

There are two choices: Platen & ADF.



Color Mode

Color Mode determines the amount of color information collected from your original. Choose this option based on whether the original is color or black & white, and on the purpose of your scanned image (i.e., color display, black & white printing, OCR, etc.). Your choice also influences file size; true-color creates the largest files, while grayscale creates smaller files and black & white creates the smallest. When you change this option, notice the projected file size in the message bar: true-color images are three times larger than grayscale and twenty-four times larger than black & white!

Color 48-Bit

Your scanner is capable of scanning images using 48-bit color depth. This provides a more dynamic color and tonal range, giving your scanned images a smoother and more colorful appearance.

Currently only a few application programs (such as Adobe PhotoShop) can accept 48-bit image data. If the application programs can't accept 48-bit color more, your images will be scanned in 24-bit color mode. To scan images in 48-bit color simply

Color 24-Bit

This color mode collects a large amount of color information from the original, up to around 16.7 million colors! Choose this option for a color original that you want to display, print or edit in color.

Grey 16-Bit and Grey 8-Bit

Use either of these modes for black & white photos or for scanning color material to print on a black & white printer. Choose 8-Bit for lower quality and smaller file size black & white images.

B&W

Use this mode to scan text or line drawings - a picture or text containing black lines only, with no colors or shades of gray.

Resolution

Resolution determines the amount of detail collected from an original. There are 75,100,150,200,300,400,800,1200,2400,4800 and Custom options. If choose "Custom", there is a window that inform you to fill in a number between 75 and 24000. If the number is less than 75 or more than 24000, the caution word appear: Please fill in the number between 75 and 24000. The higher the resolution, the greater the detail. Select a value based on the purpose of your scan. In general, we recommend you keep the resolution as low as possible, because the higher the resolution, the slower your scan and the larger the resulting file size. Furthermore, a lower resolution (100-200dpi) when using True Color or Grayscale can capture more color and detail than most printers or monitors can show. When you adjust the resolution, keep an eye on the projected file size in the message bar. The following are suggested settings for various scan file types:

Document Type	Resolution
Text (printed)	300
Text (fax)	200
Text for OCR	300
Black & White or grayscale image	150
Color photo or image	150

100 dpi

For images to display on screen at about the same size as the original in a presentation or on your web page. Also use this for larger images that you will reduce in size to include in a report or presentation and print out on a normal color or black & white printer.

200 dpi

For small images to display at a larger size on screen, or for any image to be printed out at

original size on a color or black & white printer (up to 720dpi print resolution). Also use 200dpi (with black & white scan mode) for clear OCR text (larger than 10pt); for smaller text, use 300dpi.

300 dpi

When quality is critical and a lower resolution is inadequate, choose 300dpi for any size image and for any use (to determine if the resolution is too low, look for squares in the image; see below). Also use 300dpi (with black & white scan mode) for optimum OCR results.

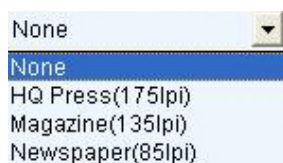
Over 300 dpi.

Unless you have a specific reason for selecting a higher resolution, we suggest you do not, as the resulting file size may be very large and take up a lot of your hard disk space.

Descreen

There are four modes for your choice:

1. Non-setting, do not choose Descreen function.
2. Descreen for HQ Press.
3. Descreen for magazines.
4. Descreen for Newspapers.



Descreen is used to reduce the effects of Moiré patterns. Although not always obvious, Moiré patterns interfere with the quality of your scanned image. Depending on their severity, they can appear as waves or patterns superimposed over your image, or simply make the image fuzzier. Moiré is a form of interference caused by the imperfect alignment between pixels sent from the video card and the screen. They appear in all color scan displays, and more often affect scans of printed images than text, as well as scans at higher resolutions as compared to those of lower resolutions.

Moiré patterns are an inevitable result of scanning, and will not be completely eliminated until significant improvements in monitor technology can be made. If your scanned image is overlaid with a ripple, wave, dot or other odd pattern, select **Descreen** and scan again to

remove this phenomenon and produce a cleaner image.

The scanner scanning in half tone pixels causes moiré, which the screen is not able to display well. **Descrreen** operates by replacing half tone pixels with full tone pixels. Use higher levels of Moiré Reduction for objects printed in Matt finish or on plain paper, while lower levels can be used for originals such as gloss finish photographs. A side effect of using the **Descrreen** feature is a loss in quality of the scanned image; try different settings until you find a setting that gives the best compromise between quality and clarity.

Over 3200dpi, there is no **Descrreen** function, for its effect is not so obvious. For B/W, Gray 16bits and Color 48bits scan mode, **Descrreen** function doesn't work.

Scan Size

There are below items for your choice:



Choose a Scan Size depending on the size of paper you wish to output to (if output is to be printed). You can also adjust scan size by cropping the image in the preview window, which will set scan size to Custom. You can move the area by dragging the box.

☐ **Auto Adjust** Auto Adjust

Select this option to adjust automatically the Histogram to make the scanned image clearer. It does this by increasing the difference between color tones.

☐ **Auto Cut** Auto Cut

Select this option to let the scanner automatically determine the size of the item being scanned. When Auto Cut is selected, the scanner makes two passes. The first pass detects the item's size and the second pass scans the item. To enable Auto Cut, simply check the Auto Cut box in the general settings window.

Image

Image Adjust is used to make specific alterations to the quality and coloration of the

output image. When you are satisfied with the adjustments you have made, you can save the configuration for later use by clicking Save and selecting a file name and directory. Image Adjust contains 4 option screens: General Adjust, Curves, Level and HSB.

General Adjust



General Adjust allows you to adjust the Brightness, Contrast, Gamma and Sharpness of the output image.

Brightness

Brightness is a measure, ranging from -127 to 127 , of the relative lightness or darkness of the image. Increasing the brightness will bleach the scanning image, while decreasing it will result in a darker final image. Move the slider to adjust the brightness of the overall image or the selected color.

Contrast

The higher the Contrast, the clearer the image, while lower Contrast results in blurry images. Increasing the Contrast decreases the mid-range hues, and increases the high and low hues. Generally, adjusting Contrast is used to eliminate spots and shadows from scanned black & white or grayscale images, or to "clean" color images. Move the slider to adjust the Contrast of the overall image or the selected color. This function is not suitable for line drawings or other pure black & white images.

Gamma

Moving the **Gamma** slider will affect the colors in your image as seen on the monitor. Although the default Gamma setting is ideal for most scans, the computer does not always receive the precise color information from the scanning hardware, and some distortion in color may occur. Through altering the gamma of either the overall image or the selected color, you can achieve the exact coloration you desire.

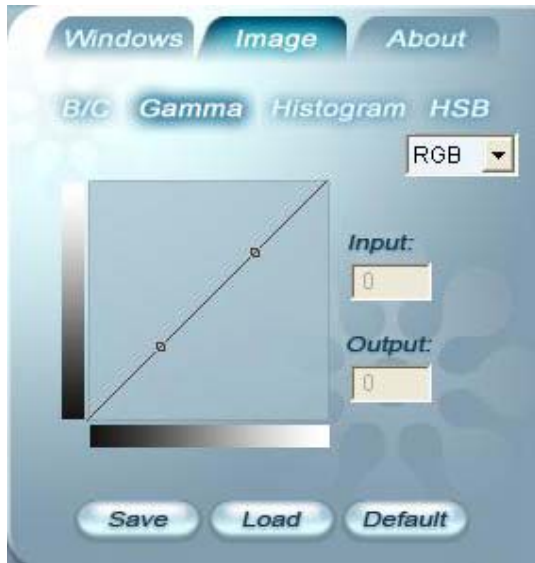
Threshold/Sharpness

If you choose Color Mode as Black and White, move the slider of threshold to make the image sharper or fuzzier.

Note: If you choose the Color Mode as Grayscale(8 bit), Grayscale(16 bit), Color(24 bit), Color(48 Bit), the sharpness setting is as below, there are three choice: None, Sharpen, Sharpen more.

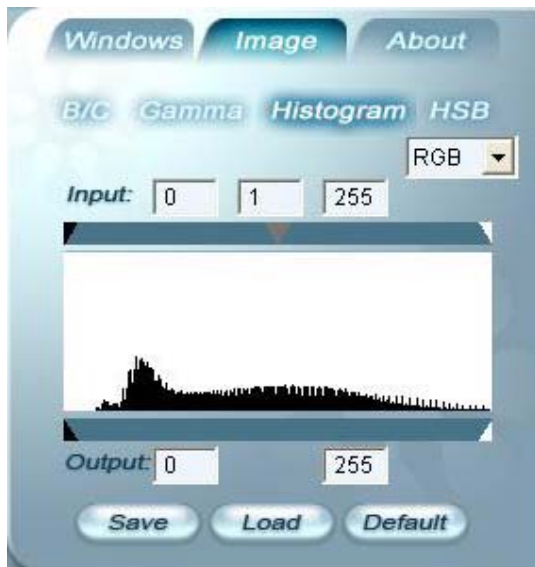


Curves



Select Curves to display the red, green, or blue color curve. The mixed color will be displayed in black. **Note: changing the color curve will affect the results of all scanner output.**

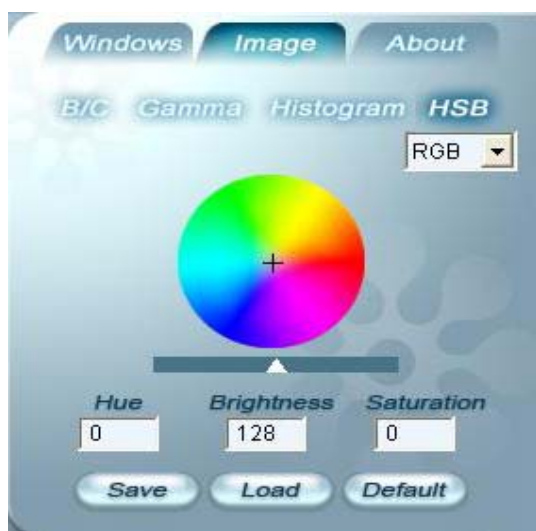
Level



Level displays a histogram of the distribution of red, green, blue, grayscale, hue, saturation, and/or lightness values in an image. The horizontal axis represents the lightness values of

the image from black to white (0 to 255). The vertical axis indicates the number of pixels at each value. At a lightness level where there are many pixels of one of the values, the corresponding line spikes; where there are few pixels, it appears close to the horizontal axis. In dark images, most of the pixels are grouped at the left side. If an image is too light, the pixels are grouped at the right.

HSB (Hue, Saturation and Brightness)



Saturation is the intensity or purity of the colors displayed in the image. The intensity of the color refers to the color's distance from the shade of gray; a value of 0 represents gray, while a value of 255 represents the most intense color.

Hue indicates a color's position on the standard color wheel. At a value of 0, the colors stay true to the original image. Changing hue rotates the color's position by the appropriate number of degrees along the color wheel. For example, selecting a hue value of 30 rotates the color's position 30 degrees, while a hue value of 330 represents a clockwise rotation of 30 degrees. Obviously, the smallest hue value is 0, the greatest hue value is 360, which changes all the image's colors to the exact opposite colors according to the color wheel.

Brightness is a measure, ranging from 0 to 255, of the relative lightness or darkness of the image. Increasing the brightness will bleach the scanning image, while decreasing it will result in a darker final image. Move the slider to adjust the brightness of the overall image or the selected color.

About Driver

This window tells some information about Diver.

