

Star Inbox Driver

Installation Manual

- for Windows 10 -

Table of Contents

Getting started.....	3
1. Installing the Printer Driver Software.....	4
1.1 USB Interface <Installing with Plug and Play>	4
1.2 Non-USB Interface <Installing with the Add Printer Wizard>	7
1.2.1 Adding a Printer Port (Ethernet Interface only)	7
1.2.2 Adding a Printer Driver.....	11
2. Uninstalling	18
2.1 Remove the printer driver	18
2.2 Delete the printer port (Ethernet Interface only)	22
3. Release History	23

- Windows is a registered trademark of Microsoft Corporation in the U.S, Japan and/or other countries.
- Company and product names listed in this document are trademarks/registered trademarks of their respective owners.

Getting started

This manual describes how to install the Star Inbox Driver on a PC running Windows 10. The installation procedure is the same for the following applicable models.

The information included in this manual applies to the 32-bit and 64-bit versions of Windows 10.

Compatible models

- **SP500 / TSP600 / TSP700 / TSP800 / TUP900 / TSP1000**



This manual only contains the installation and uninstallation procedures.
For information on the Inbox Driver functions, refer to the “Star Inbox Software Manual.”

Make the following preparations before installation.

1. Download Software package file “Windows Inbox Driver” from Star’s website and save to any place.
Download File name: StarInboxDriver_win10_yyyymmdd*.zip (*release date)
2. Unzip the zip file to any place.

1. Installing the Printer Driver Software

The installation procedure varies depending on the interface that you are using.

After reading the following information, install the driver by following the appropriate procedure.

Via USB interface <only the printer class>:

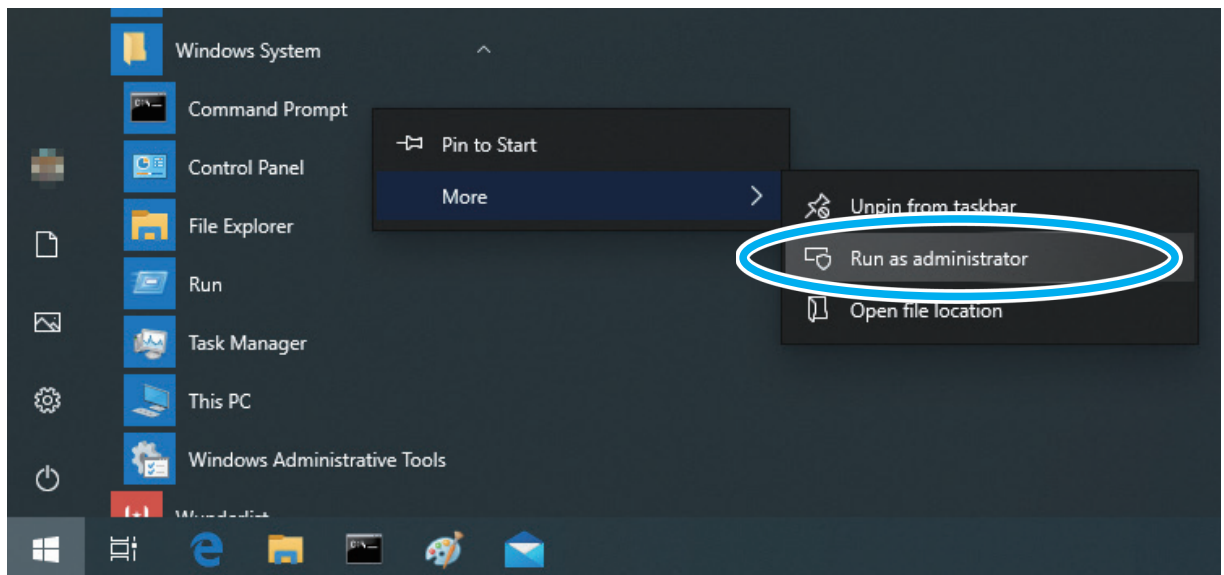
Refer to the installation procedure in "1.1 USB Interface <Installing with Plug and Play>" on page 4

Via Non-USB Interface (Ethernet/Parallel/Serial Interface):

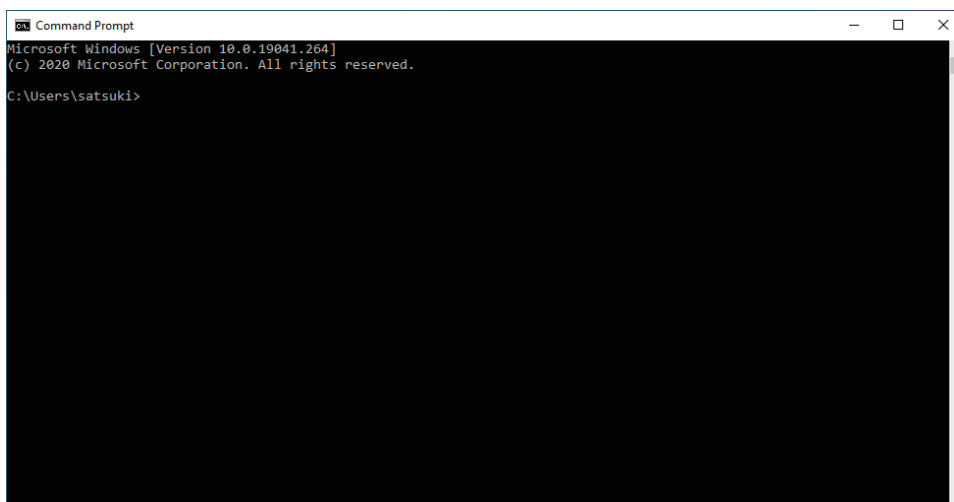
Refer to the installation procedure in "1.2 Non-USB Interface <Installing with the Add Printer Wizard>" on page 7.

1.1 USB Interface <Installing with Plug and Play>

- 1 From the Start menu in Windows, select [Windows System], right-click [Command Prompt], and select [More] > [Run as administrator].



- 2 When the User Account Control dialog box appears, click [YES].
The command prompt starts.



3 Execute the command that is underlined in the following figure.

```

Microsoft Windows [Version 10.0.19041.329]
(c) 2020 Microsoft Corporation. All rights reserved.

C:\Windows\system32> pnputil /add-driver <INF file name (full path)> → command execution
Microsoft PnP Utility

adding driver package :   prnst001.inf
Driver package added successfully. (Already exists in the system)
Published Name :         oem1.inf

Total driver packages :   1
Added driver packages :   1

C:\Windows\system32> → work completion

```

i Specify the <INF file name (full path)> in the command according to your system environment.

32bit OS	Any place*/PrinterDriver/32bit/prnst001.Inf
64bit OS	Any place*/PrinterDriver/64bit/prnst001.inf

* The folder that you unzipped the Zip file.

Command example:

```

Administrator: Command Prompt
Microsoft Windows [Version 10.0.19041.329]
(c) 2020 Microsoft Corporation. All rights reserved.

C:\WINDOWS\system32>pnputil /add-driver C:\Users\satsuki\Desktop\PrinterDriver\64bit\prnst001.inf
Microsoft PnP Utility

Adding driver package:  prnst001.Inf
Driver package added successfully. (Already exists in the system)
Published Name:         oem6.inf

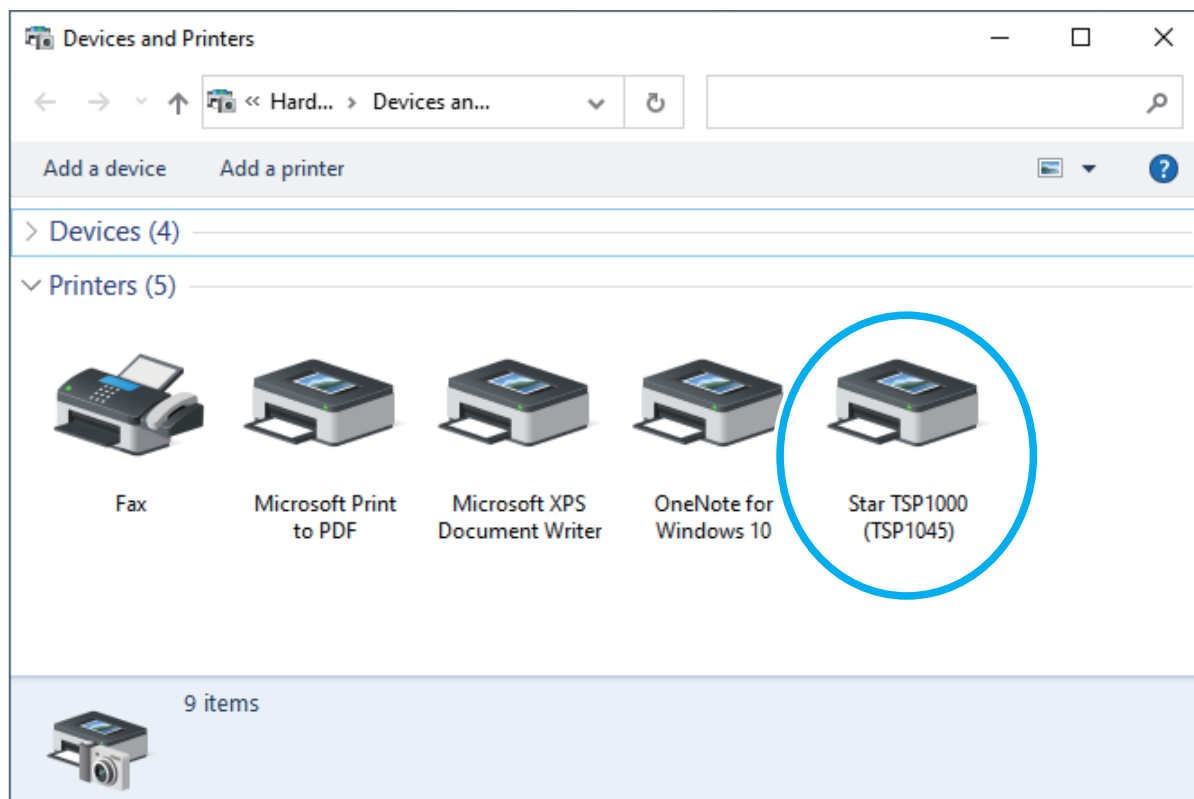
Total driver packages:  1
Added driver packages:  1

C:\WINDOWS\system32>_

```

- 4 After specifying the information, close the Command Prompt dialog box.
- 5 Connect the computer and printer by USB cable, and then turn on the printer with the power switch. The computer detects the new hardware and installs the printer driver with Plug and Play.

If the printer driver was installed successfully, the Devices and Printers window is displayed.

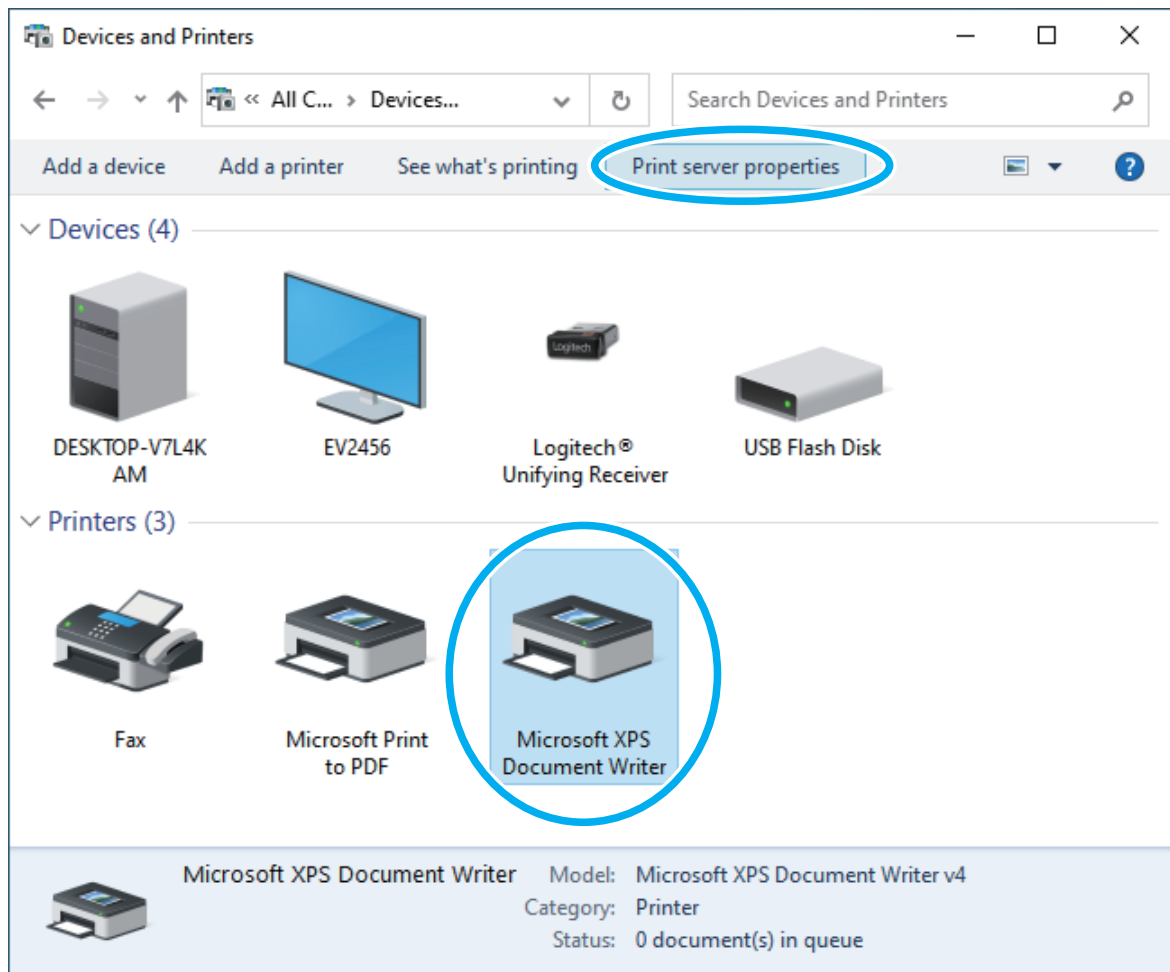


1.2 Non-USB Interface <Installing with the Add Printer Wizard>

If you are using Parallel/Serial Interface, please check the procedure of "1.2.2 Adding a Printer Driver" on page 11.

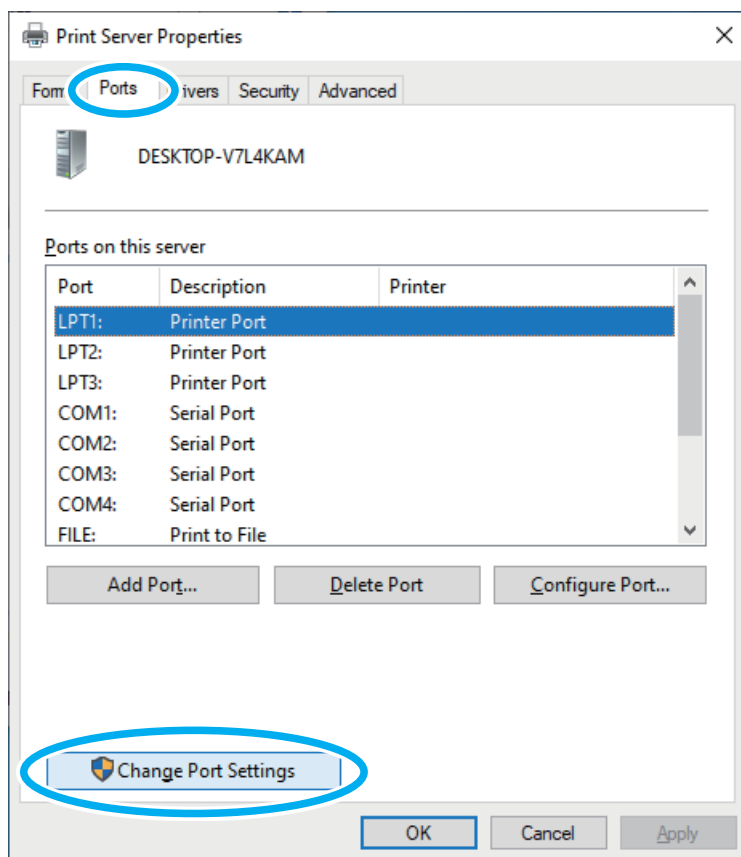
1.2.1 Adding a Printer Port (Ethernet Interface only)

- 1 From the Start menu in Windows, select [Windows System] > [Control Panel] > [Devices and Printers]. The Devices and Printers window opens. Select the icon of the Microsoft XPS Document Writer or another device, and then click [Print Server Properties].

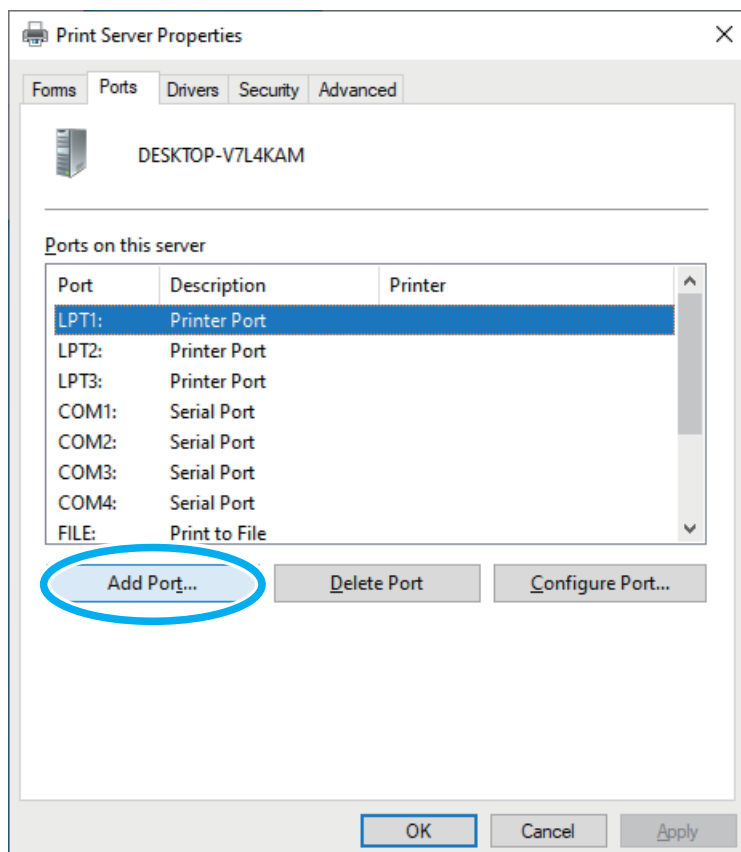


! A device must be selected to display the print server properties.

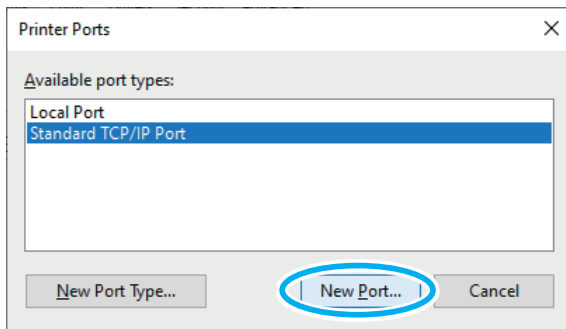
- 2 Select the "Ports" tab and click [Change Port Settings].



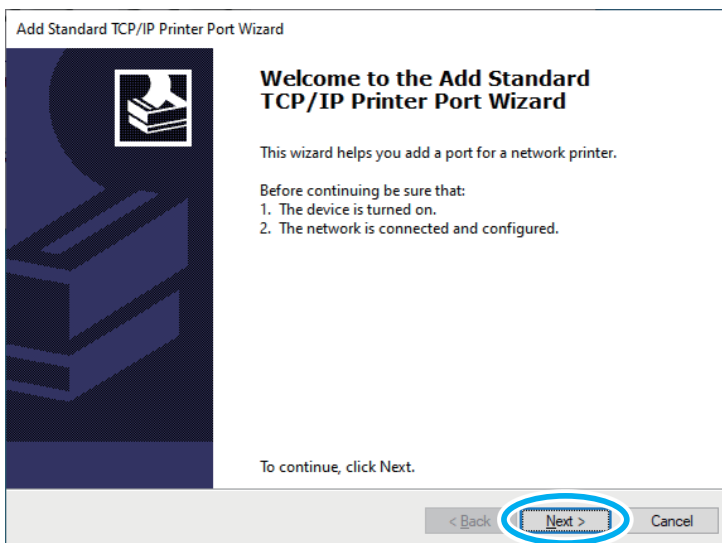
- 3 Click [Add Port...].



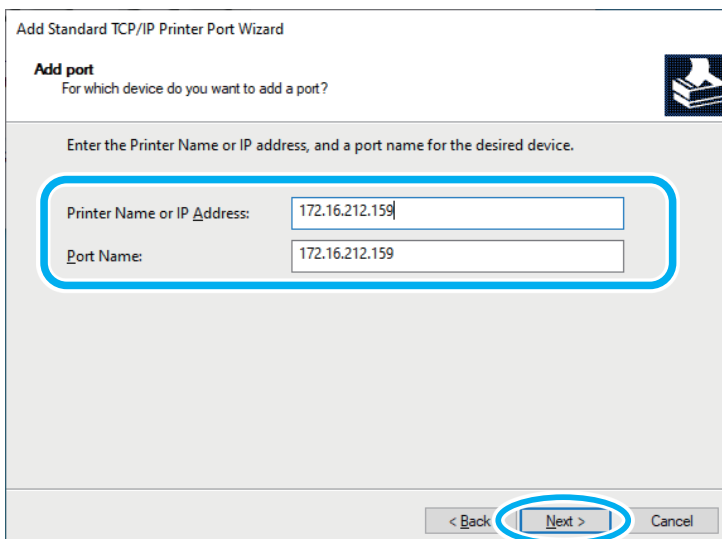
- 4 For the port type, select [Standard TCP/IP Port]. Click [New Port].



- 5 "Add Standard TCP/IP Printer Port Wizard" appears. Click [Next].



- 6 Enter a name of your choice for the new port, and click [Next].
The IP address can be confirmed by printing a self-print.



i The IP address is included in the Network Card information printed by self-printing (by powering on while pressing the Feed button*). For details about the self-printing, refer to the "Hardware Manual".

* **When using SP500:** When the buzzer sounds once, release the Feed button. **TUP900:** Powering on while pressing the SW1.

- 7 For the device type, check "Standard" and select [Generic Network Card]. Then click [Next].

Add Standard TCP/IP Printer Port Wizard

Additional port information required
The device could not be identified.

The device is not found on the network. Be sure that:

1. The device is turned on.
2. The network is connected.
3. The device is properly configured.
4. The address on the previous page is correct.

If you think the address is not correct, click Back to return to the previous page. Then correct the address and perform another search on the network. If you are sure the address is correct, select the device type below.

Device Type

☒ Standard ☐ Custom

Generic Network Card

Settings...

< Back Next > Cancel

- 8 Click [Finish].

Add Standard TCP/IP Printer Port Wizard

Completing the Add Standard TCP/IP Printer Port Wizard

You have selected a port with the following characteristics.

SNMP:	No
Protocol:	RAW, Port 9100
Device:	172.16.212.159
Port Name:	172.16.212.159
Adapter Type:	Generic Network Card

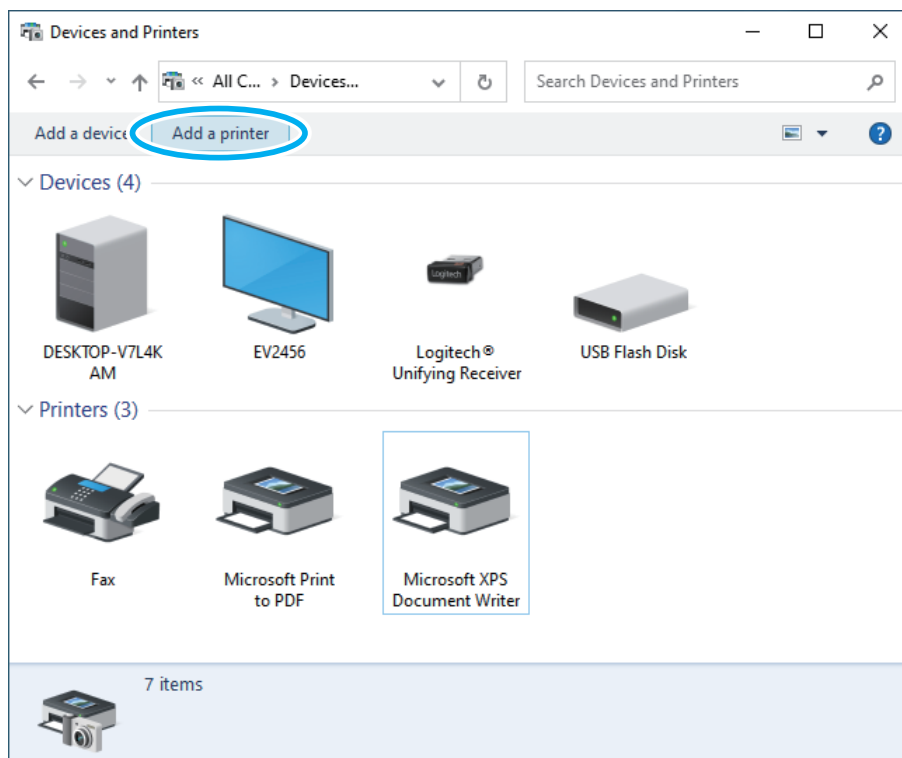
To complete this wizard, click Finish.

< Back Finish > Cancel

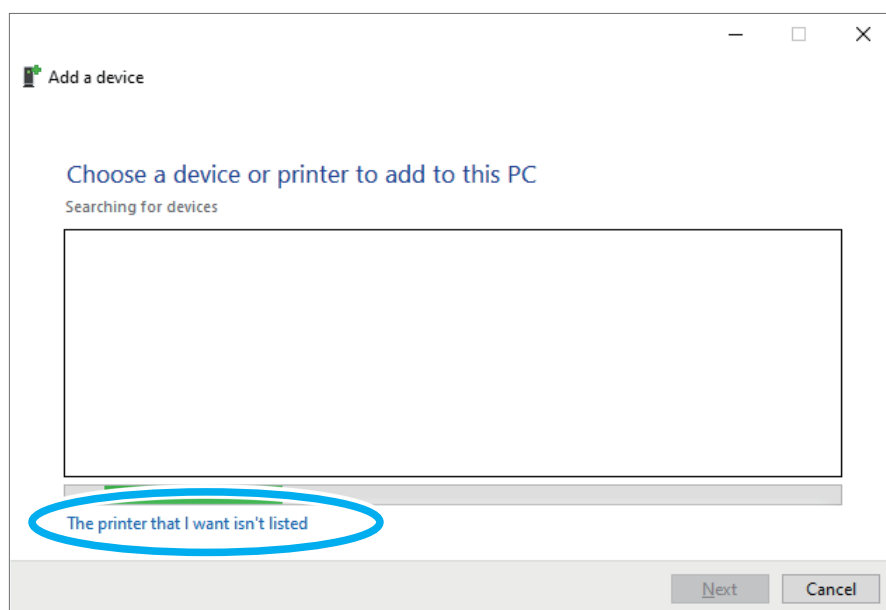
1.2.2 Adding a Printer Driver

Use the following procedure to install the printer driver.

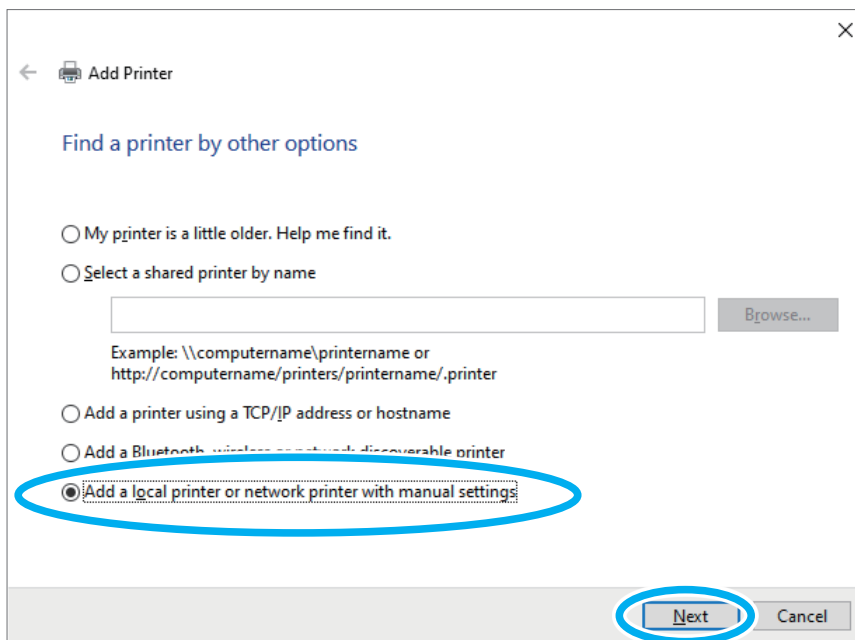
- 1 From the Start menu in Windows, select [Windows System] > [Control Panel] > [Devices and Printers]. The Devices and Printers window opens. Click [Add a printer].



- 2 Click "The printer that I want isn't listed".



- 3 Select "Add a local printer or network printer with manual settings", and click [Next].

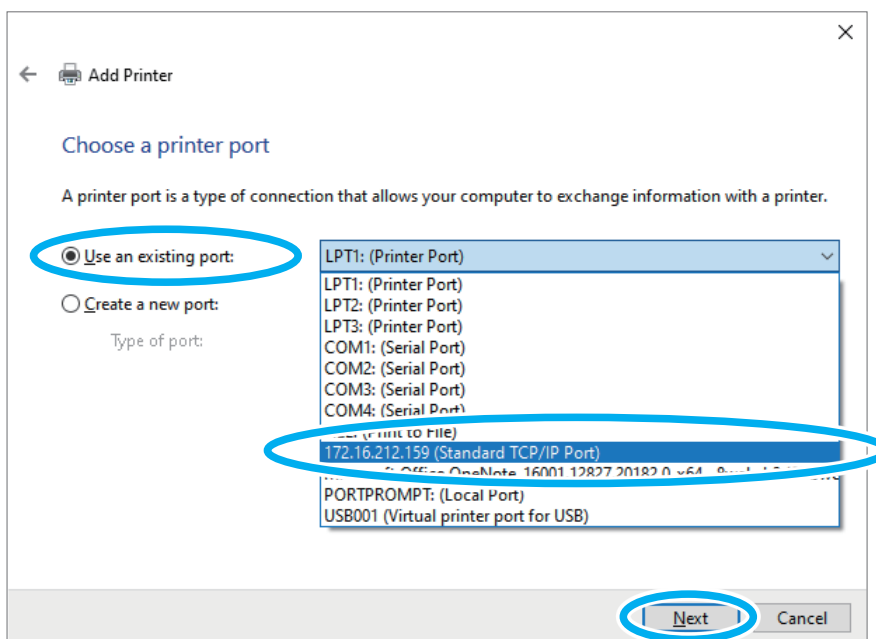


- 4 Select the "Use an existing port:" option, and specify the port according to your Interface. And click [Next].

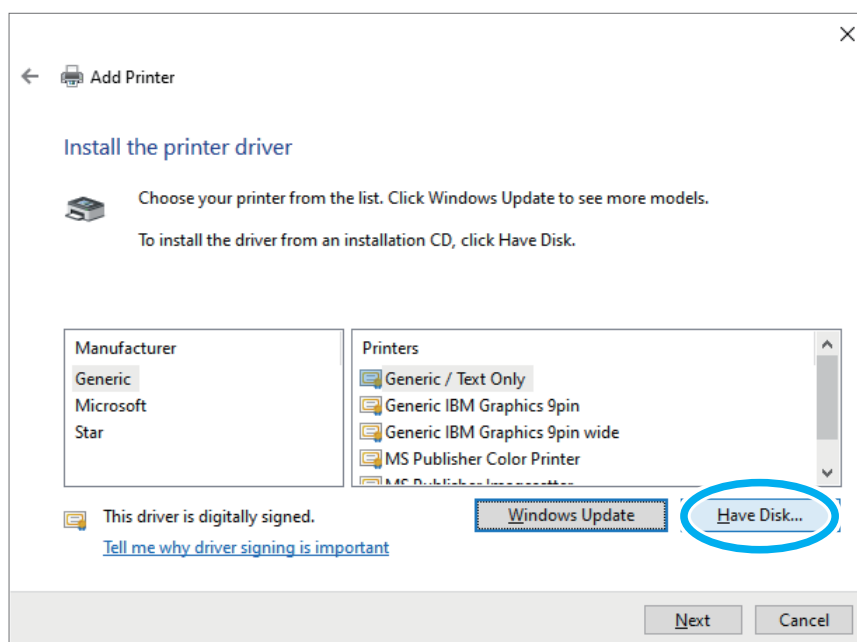
Port to choose:

Ethernet	IP Address (Standard TCP/IP Port) (which was added in "1.2.1 Adding a Printer Port (Ethernet Interface only)" on page 7)
Parallel	LPT1:(Printer Port)
Serial	COM1:(Serial Port)

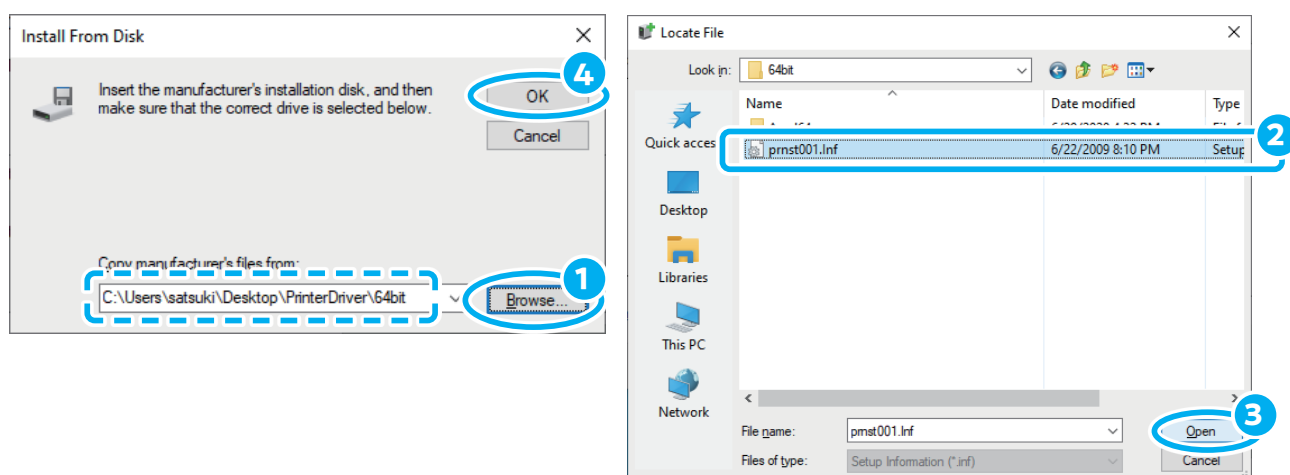
Case of Ethernet:



5 Click [Have Disk].



6 Select the INF file that you have unzipped to the location on your PC. Click [OK].

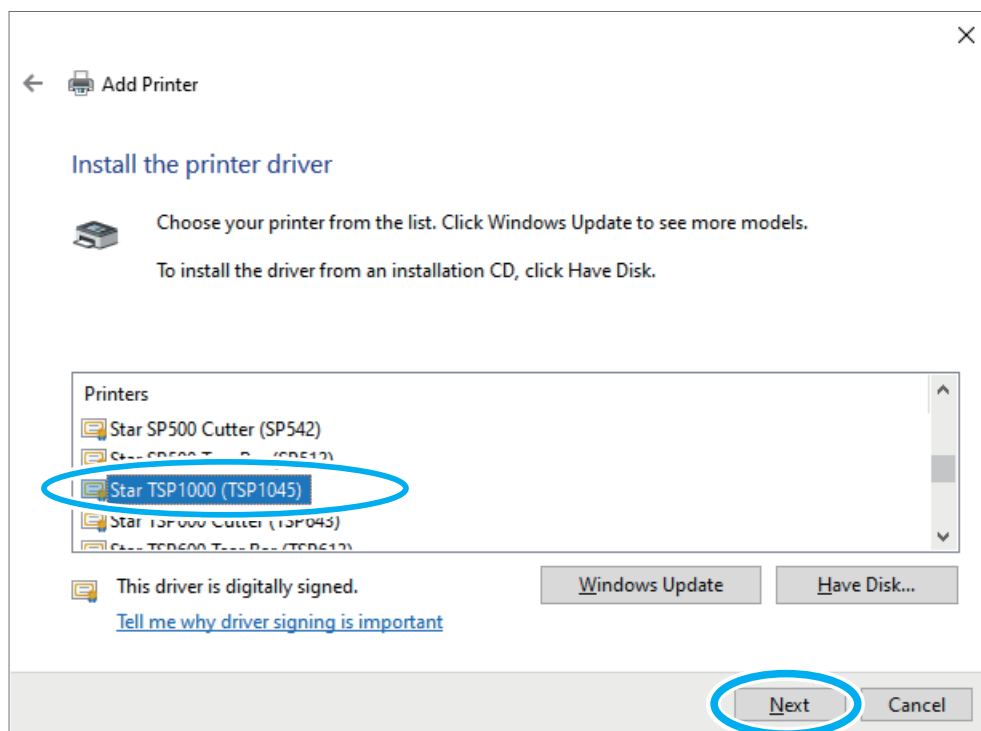


i Specify the **INF file** according to your system environment.

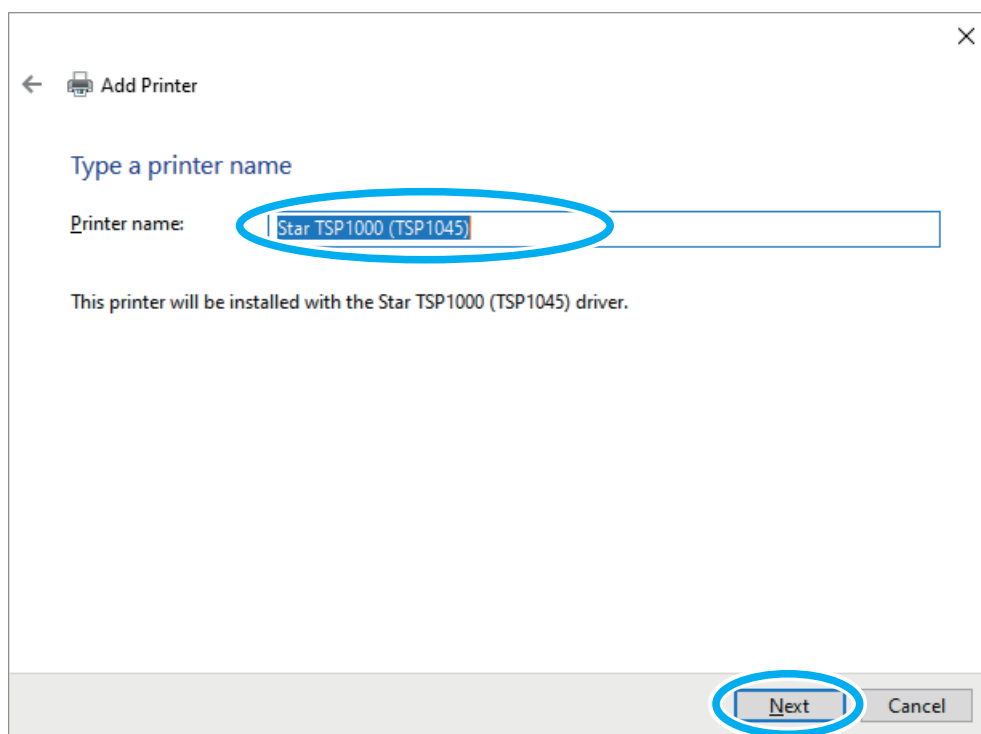
32bit OS	<i>Any place</i> */PrinterDriver/32bit/prnst001.Inf
64bit OS	<i>Any place</i> */PrinterDriver/64bit/prnst001.inf

* *The folder that you unzipped the Zip file.*

- 7 Select the printer you wish to install, and click [Next].

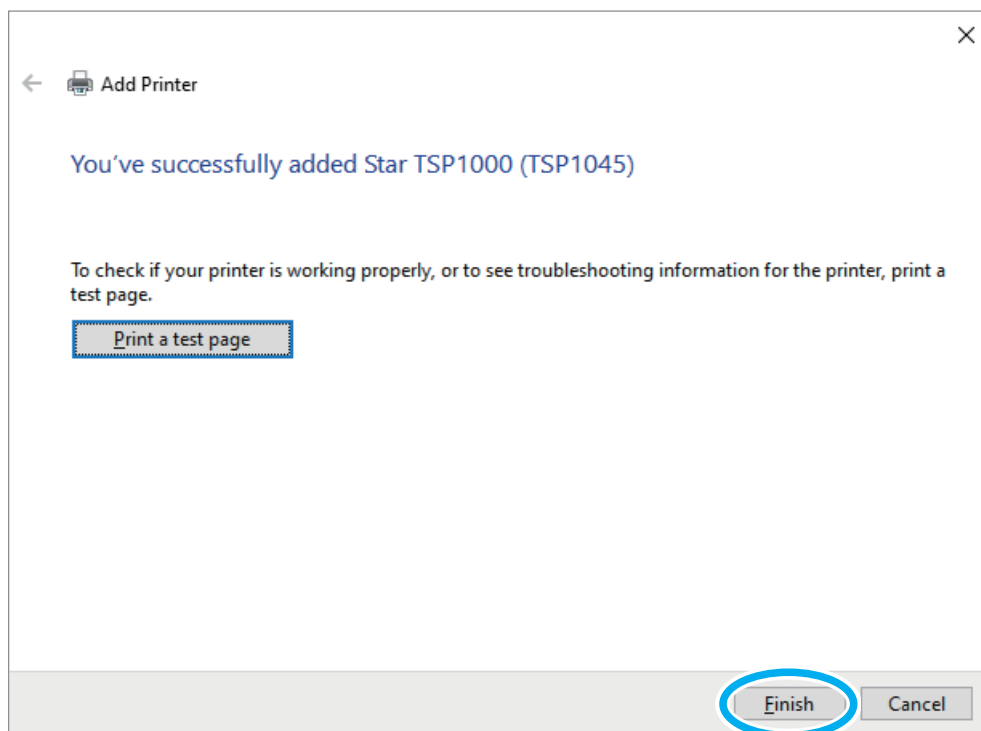


- 8 Now enter the printer name that you wish to use for the printer. This is the name that will be used by the Windows system, and click [Next].



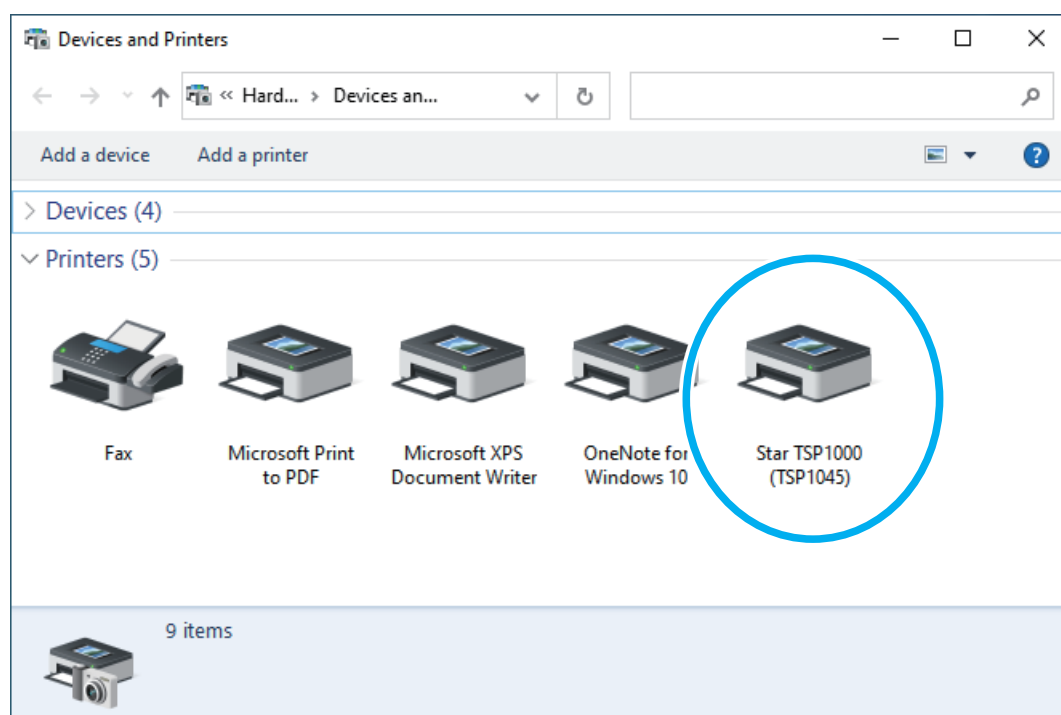
- 9 When the User Account Control dialog box appears, click [YES].

- 10 If necessary, click [Print a test page] to check if the printer is working properly. Click [Finish].



! When using a serial port, do not print the test page.

- 11 If the printer driver was installed successfully, the Devices and Printers window is displayed.

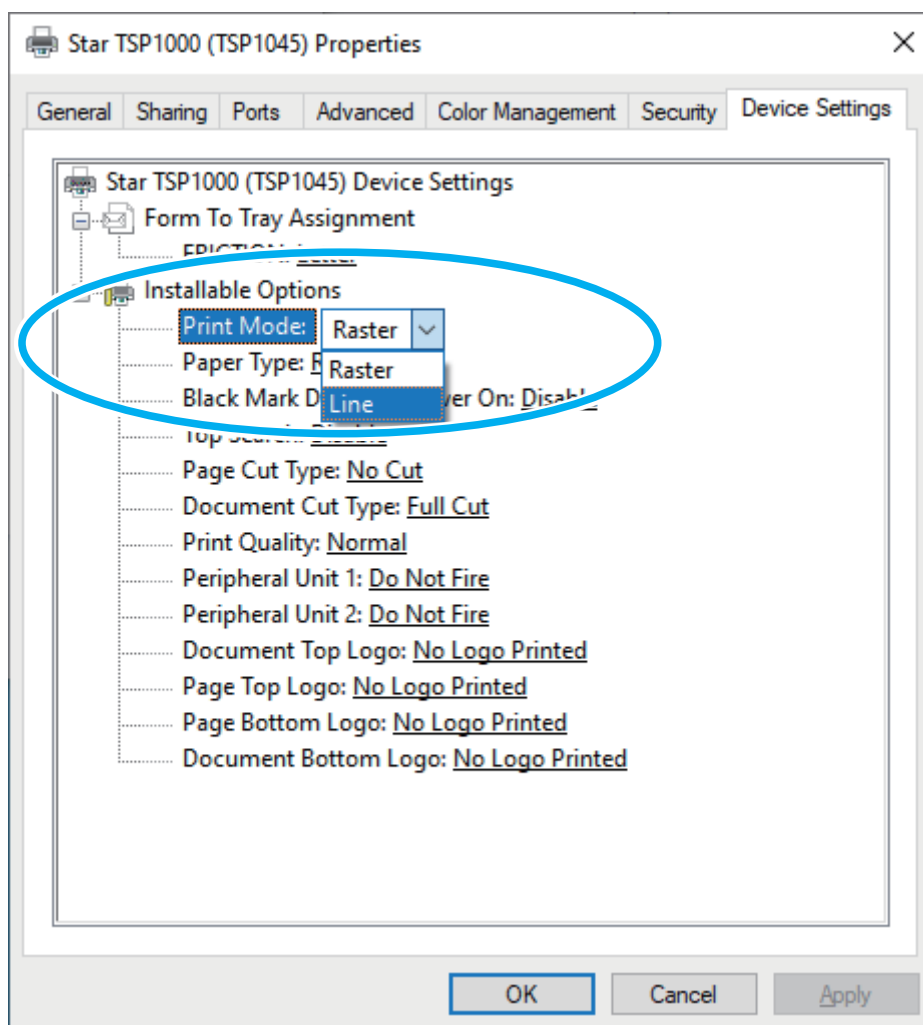


Notes for Printing via a Serial Interface

- 1 When you are using the serial interface to print from this driver, you must set Print Mode to “Line” for the following models.

◆ **Compatible models : TSP600 / TSP700 / TSP800 / TUP900 / TSP1000**

! The “Raster” print mode is not supported on the models listed above.



- 2 When using this Windows driver to print through a serial interface, it is recommended that you use Line mode. For fastest print speed, use Line mode with device fonts.

Note also that printer settings and printer-port settings must be correctly matched.

You can check the printer settings by executing a self-printing.

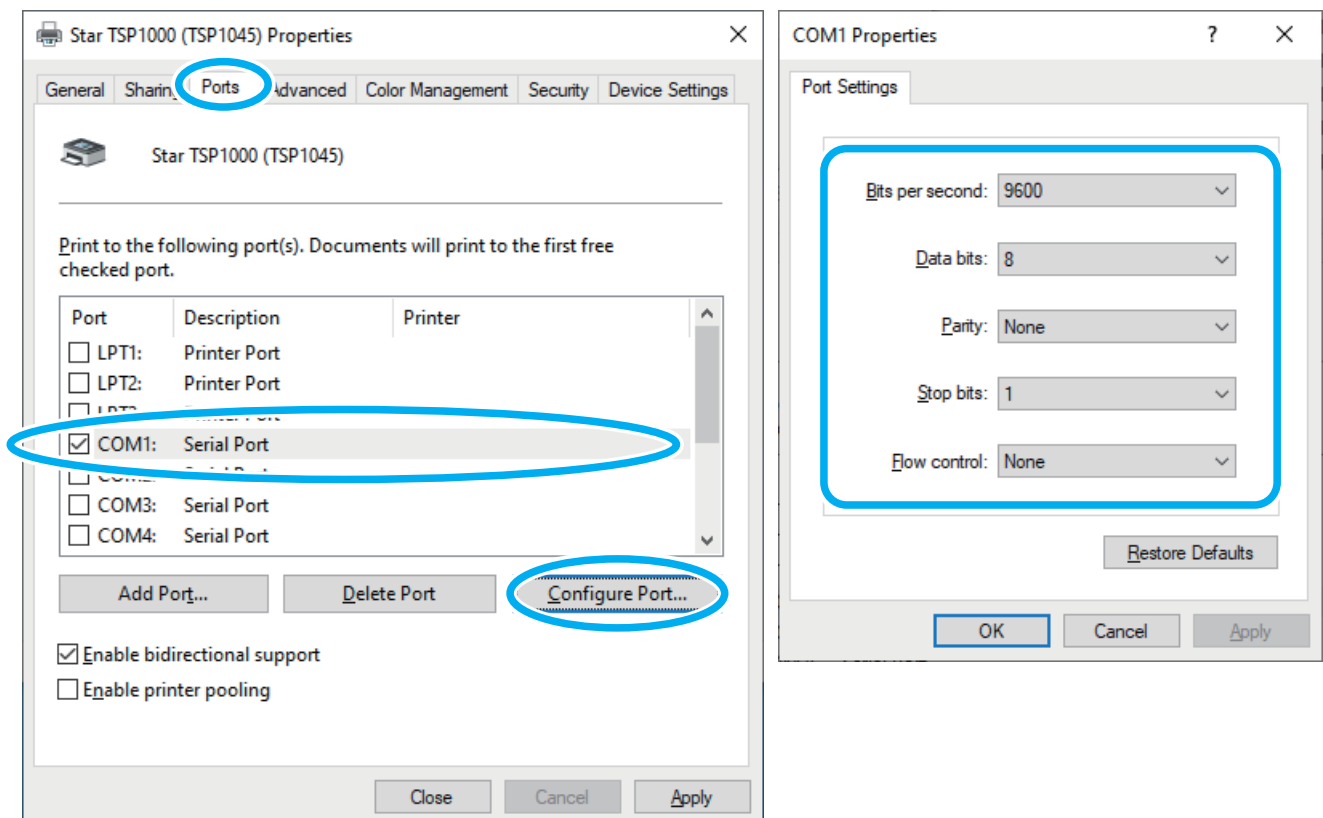
i The printer settings can be confirmed by the "Interface: RS-232C DIP Switch Information" printed by self-printing (by powering on while pressing the Feed button*).

For details about the self-printing, refer to the "Hardware Manual".

* **When using SP500:** When the buzzer sounds once, release the Feed button. **TUP900:** Powering on while pressing the SW1.

To configure the printer port, proceed as follows.

- ① From the Start menu in Windows, select [Windows System] > [Control Panel] > [Devices and Printers].
- ② Right-click the printer icon to display the drop-down menu, and then click [**Printer properties**].
- ③ Click the **Ports** tab.
Select the port you will connect to, and then click [**Configure Port**] to display the port properties dialog box. Match the settings to the printer settings.



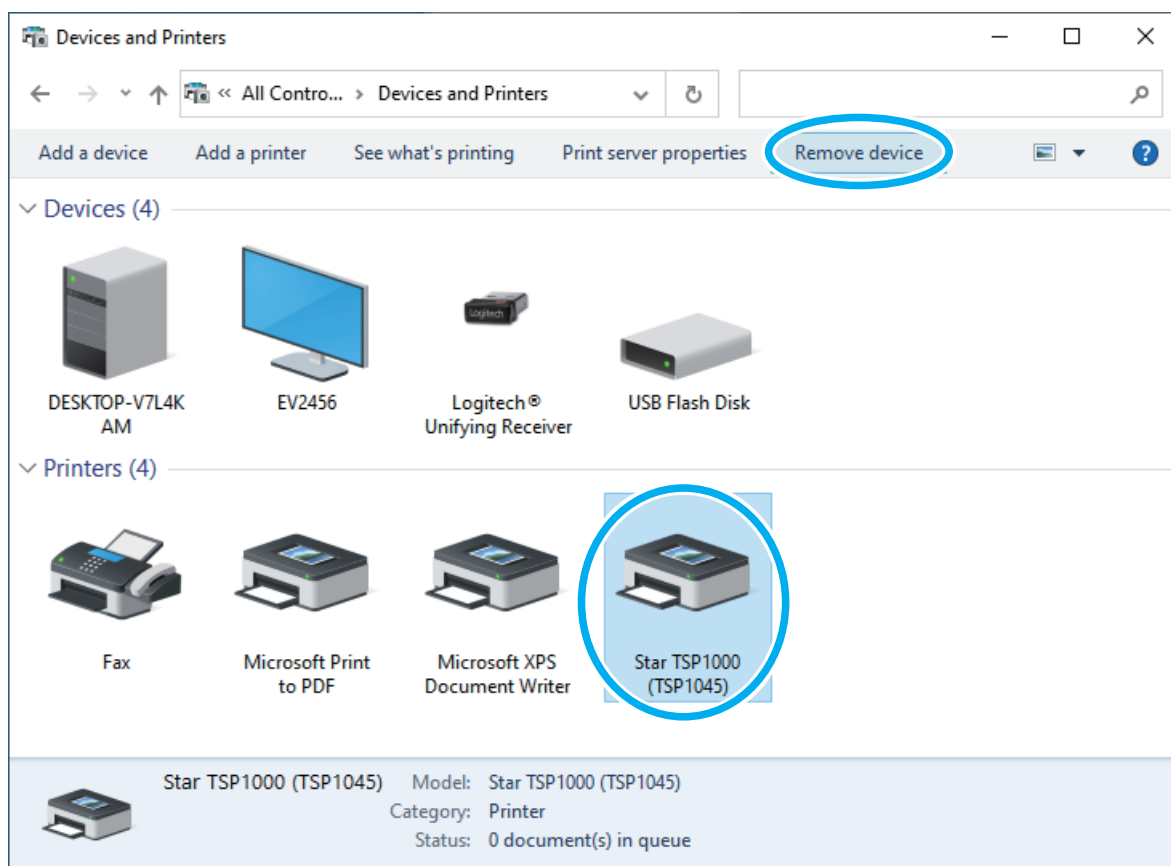
i If the **Flow Control** for the serial connection is set to **Xon/Xoff**, clear the **Enable bidirectional support** check box.

2. Uninstalling

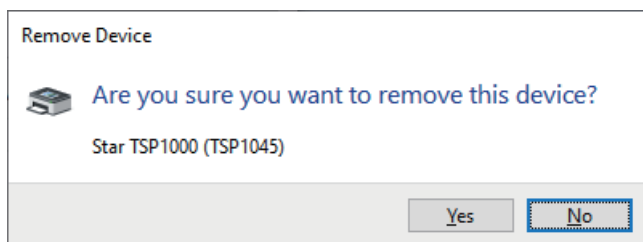
2.1 Remove the printer driver

Use the following procedure to uninstall the printer driver.

- 1 Click the printer icon, and then click [Remove device].

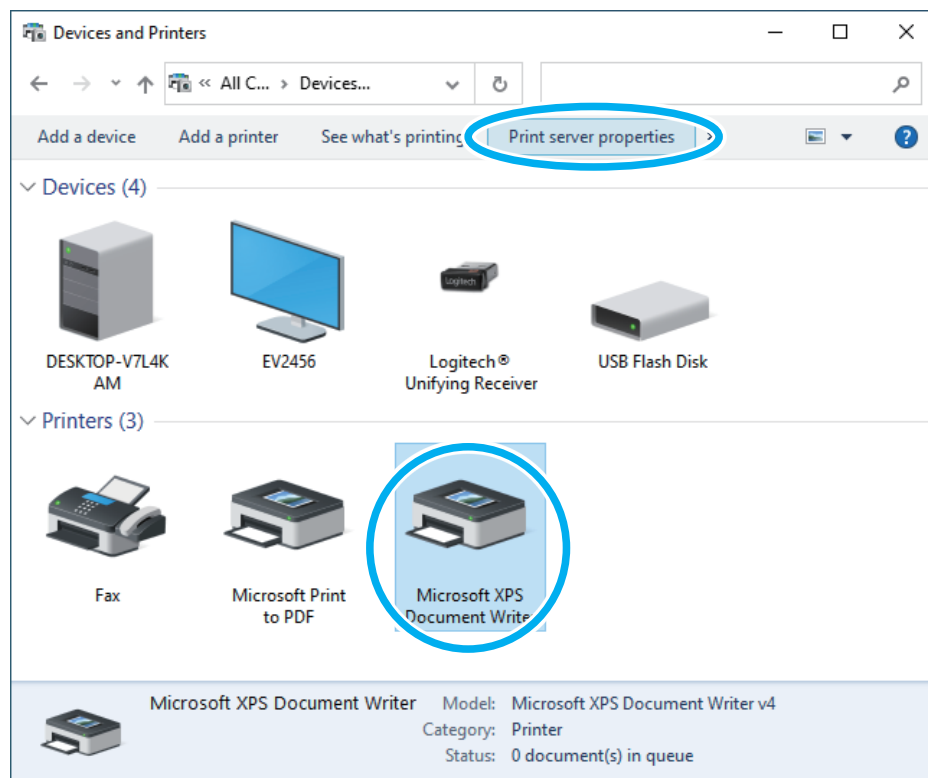


- 2 At the following dialog, click [Yes].



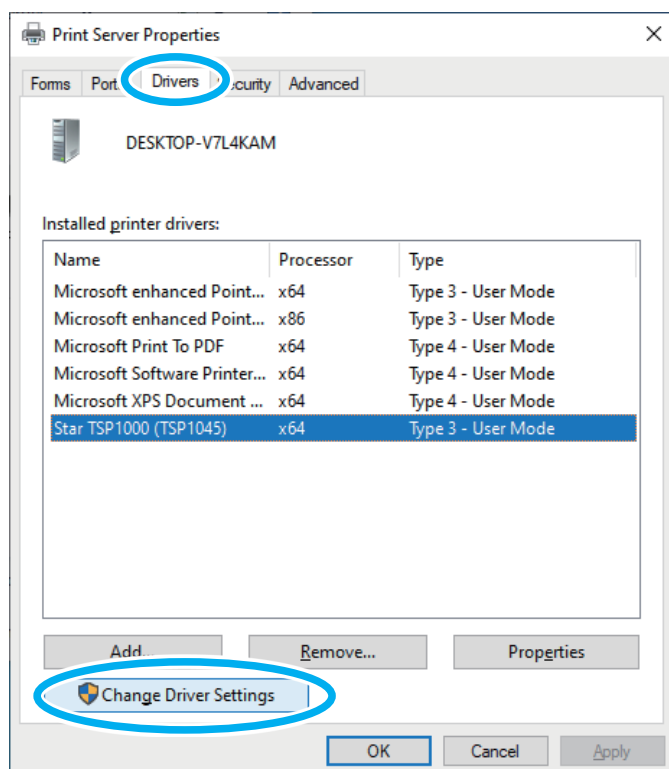
The printer queue is deleted.

- 3 Select the icon of the Microsoft XPS Document Writer or another device, and then click [Print Server Properties].

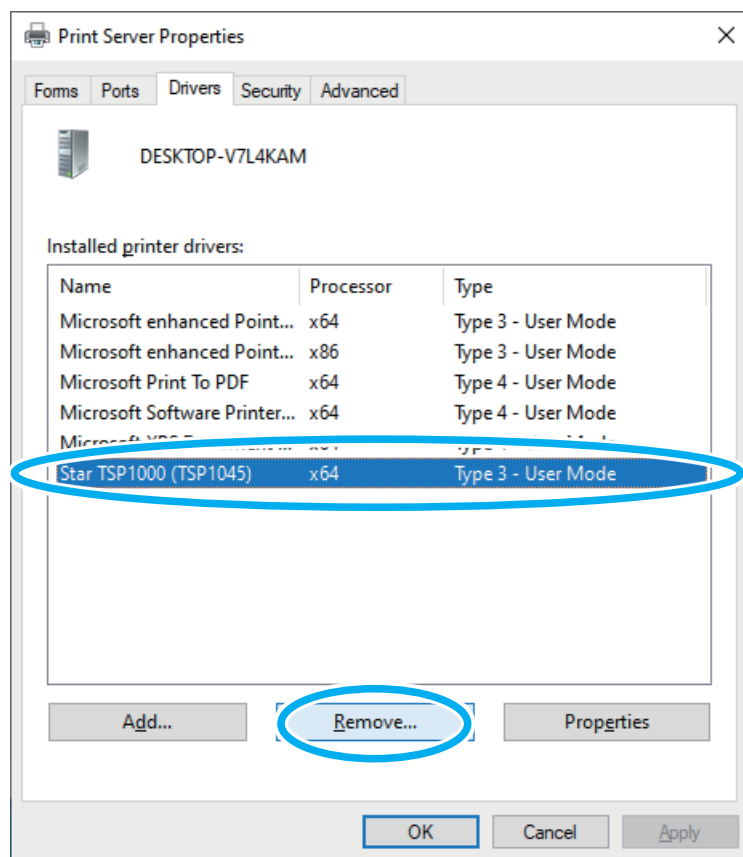


i A device must be selected to display the print server properties.

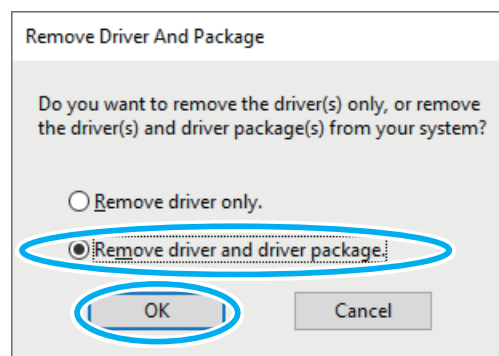
- 4 Select the [Drivers] tab and click [Change Driver Settings].



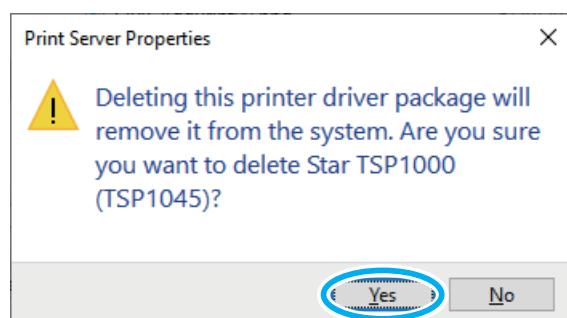
- 5 Select the driver to be uninstalled and click [Remove].



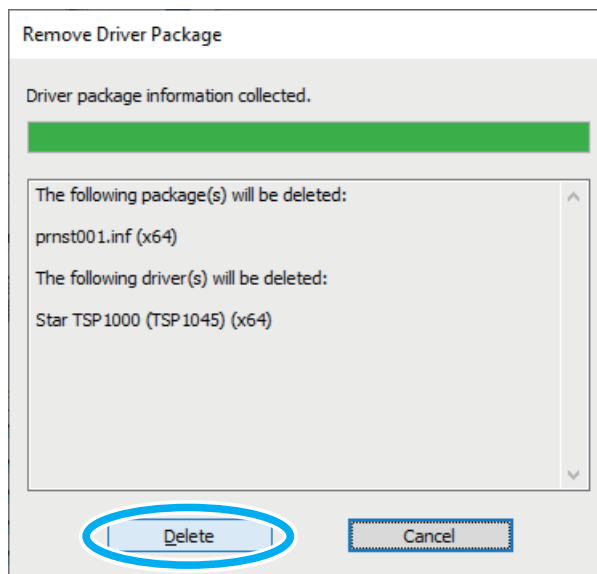
- 6 When the Remove Driver And Package dialog box appears, select "Remove driver and driver package" option and click [OK].



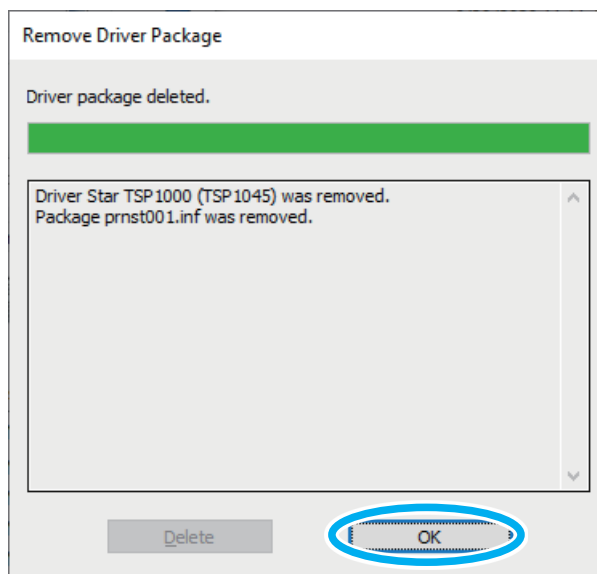
- 7 At the following dialog, click [Yes].



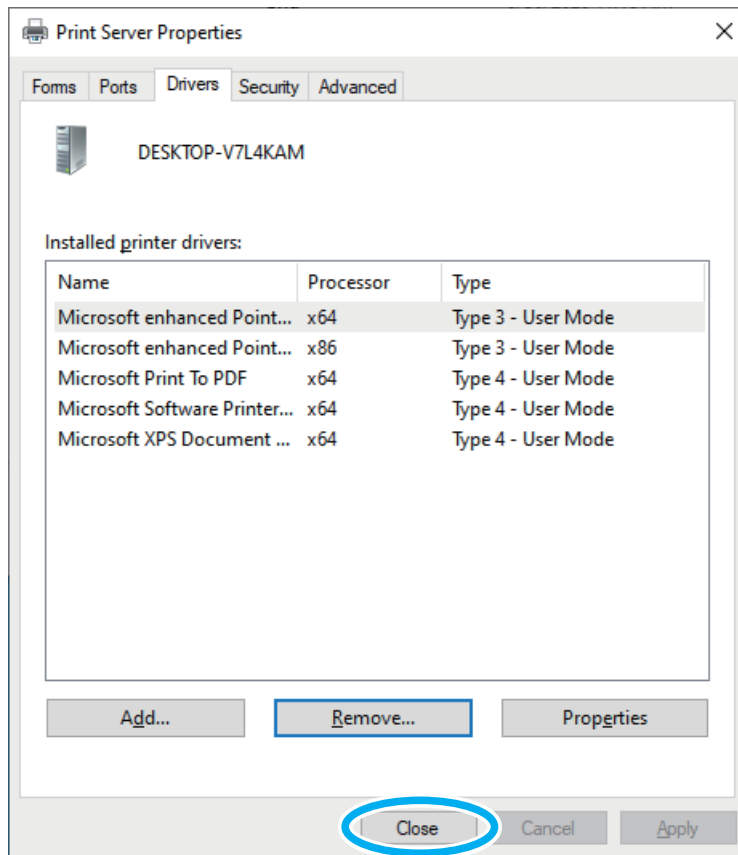
- 8 The driver package information is collected and the .inf file name corresponding to the model is displayed. Click [Delete].



- 9 Click [OK].



10 The driver is uninstalled.



In case of USB, Parallel and Serial Interface:

Click [Close] to complete the uninstallation process.

In case of Ethernet Interface:

Follow the procedure below to delete the printer port.

2.2 Delete the printer port (Ethernet Interface only)

When you are using the Ethernet interface, uninstalling the device normally deletes the port automatically. There are rare occasions in which the port is not deleted. Should this occur, follow the procedure below to delete the unwanted port.

- 1 Select the "Ports" tab. Select the port to be deleted and click [Delete Port].
- 2 At the following dialog, click [Yes].
- 3 The port is uninstalled. Click [Close] to complete the uninstallation process.

3. Release History

Rev. No.	Date	Contents
Rev. 1.0	Jun. 2020	New Release



<http://www.starmicronics.com/support>