

Printer Driver Instruction Manual

~For Windows 7,8,and 10~

CY

February 01, 2017 Ver.1.12

CITIZEN SYSTEMS JAPAN CO., LTD.

- Concerning Copyright

The copyrights for the CY Printer Driver Instruction Manual, the CY Printer Driver that is included with the printer, and the contents of the CD are the property of the CITIZEN SYSTEMS JAPAN CO.,LTD.

Reproduction of any or all of the contents of the CY Printer Driver Instruction Manual, the CY Printer Driver that is included with the printer, and the contents of the CD without consent of the company is a violation of copyright law.

However, for non-commercial personal use purposes, you may make 1 copy of the Printer Driver Instruction Manual solely for back-up-purposes.

Microsoft and Windows are registered trademarks of Microsoft Corporation valid in the USA and other countries.
LEADTOOLS Copyright (C) 2008 LEAD Technologies, Inc.

- Notes for Safety Purposes

Please read the Instruction Manual well before using the printer, and follow all instructions carefully.

Further, the contents of the safety warnings and comments in the Instruction Manual concerning use met safety standards at the time of publishing.

- Concerning modification

The CY printer and the CY Printer Driver and CD contents were planned, developed, and manufactured by CITIZEN SYSTEMS JAPAN CO.,LTD.

For safety purposes, any modification is prohibited.

Contents

Chapter 1 Install	1
1.1 Printer and Host computer Preparation	2
1.2 Installing the Driver Package	2
1.3 Installing the Printer Driver	5
1.4 Installing a Driver for an Unspecified Device	9
Chapter 2 Properties	12
2.1 Opening Printer Properties	12
2.2 Explanation of Print Setting Functions	14
2.2.1 Layout	14
2.2.2 Advanced Options	15
2.2.3 Paper/Quality	19
2.2.4 Option	19
2.2.5 Color Adjustment	20
2.3 Default Values for Various Settings	21
2.4 Color Management	21
2.5 Print Area	22
2.6 Print Direction	22
Chapter 3 Updating the Driver	23
Chapter 4 Driver Removal	30

Chapter 1 Install

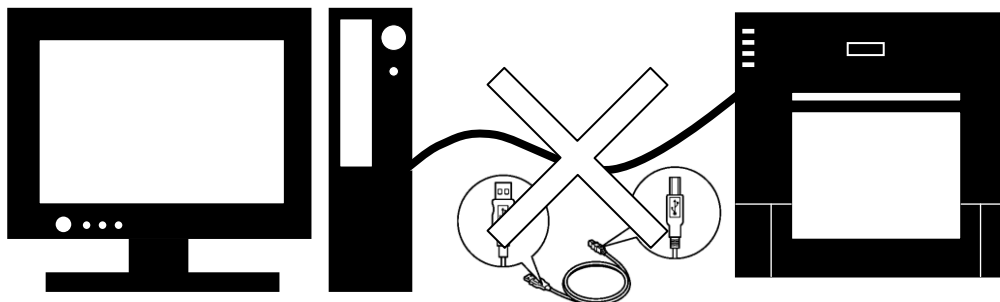
Installation Flow

Installation is done in the following 3 steps.

Details of each step are shown in a subsequent page.

STEP 1 Prepare the printer and computer

→ "1.1 Printer and Host computer Preparation"



Do not connect the USB cable at this step.



STEP 2 Install the driver package

→ "1.2 Installing the Driver Package"

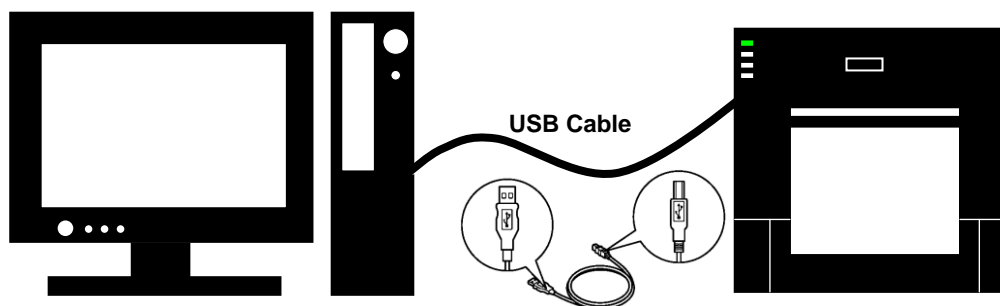


Insert the accessory CD into the disk drive and install the driver package.



STEP 3 Install the printer driver

→ "1.3 Installing the Printer Driver"



Connect the USB cable, turn the printer power ON, and install the printer driver. After installation is complete, reboot the computer.

1.1 Printer and Host computer Preparation

Check that the power for the CY printer is OFF.

Have a USB cable ready. But do not connect the printer to the computer with the USB cable at this point.

In order to install the driver, login with administrator right. The following explanations are given on the assumption of use with administrator rights.

1.2 Installing the Driver Package

Insert the accessory CD into the disk drive.

Start Explorer, and click on the corresponding drive.

(If the AutoPlay function is on, select “Open folder to view files – using Windows Explorer”.)

(In Windows 8 and 10 if the AutoPlay function is on, click on the message of “Tap to choose what happens with this disc.”, then select “Open folder to view files File Explorer”.)

Select the following folders from the accessory CD.

Windows 7 ... Drive of CD:\CY_Driver\English\7

Windows 8/10 ... Drive of CD:\CY_Driver\English\8_10

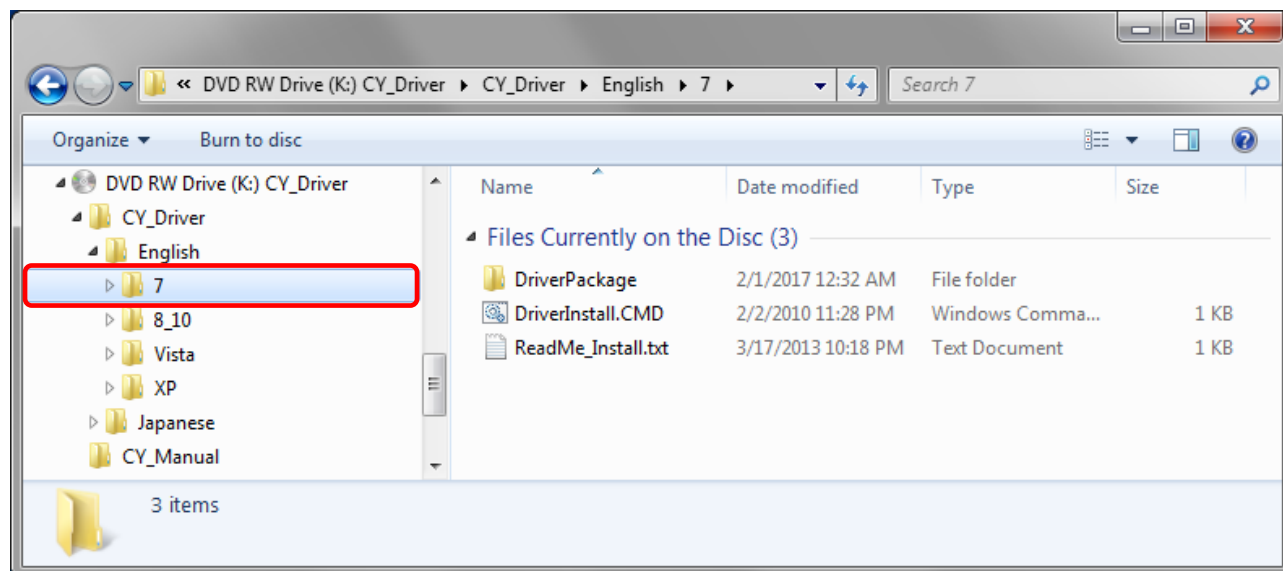


Fig 1.1 Driver Package Folder

In the selected folder, double click on the file “DriverInstall.CMD”. (Depending on your operating environment, the .CMD extension may not be shown.)

The best Driver Package Installer for your operating system (32 or 64 bit) will automatically be selected.

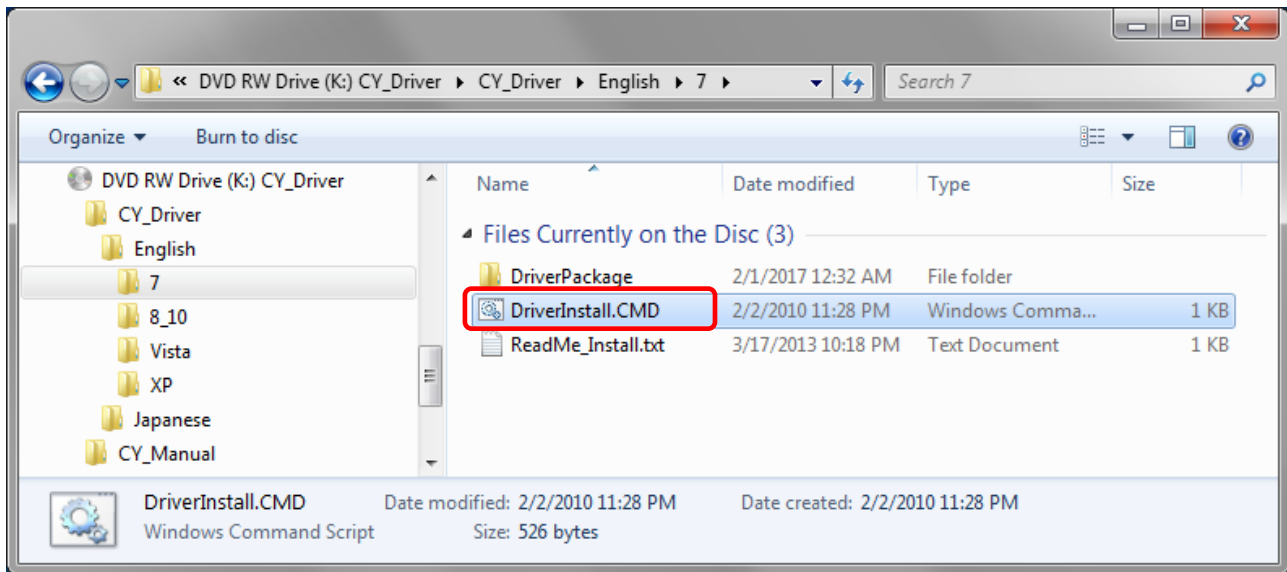


Fig 1.2 Install File

If the User Account Control dialog appears, click on “Yes”.

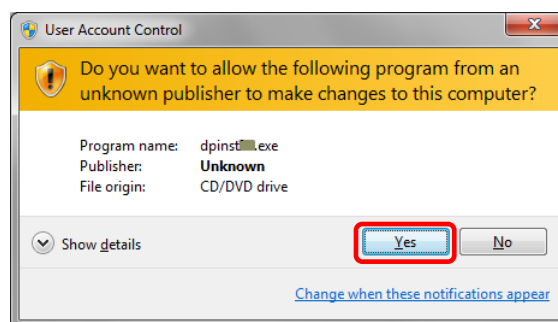


Fig 1.3 User Account Control

When the “Welcome to the Device Driver Installation Wizard!” window appears, click on “Next>”.

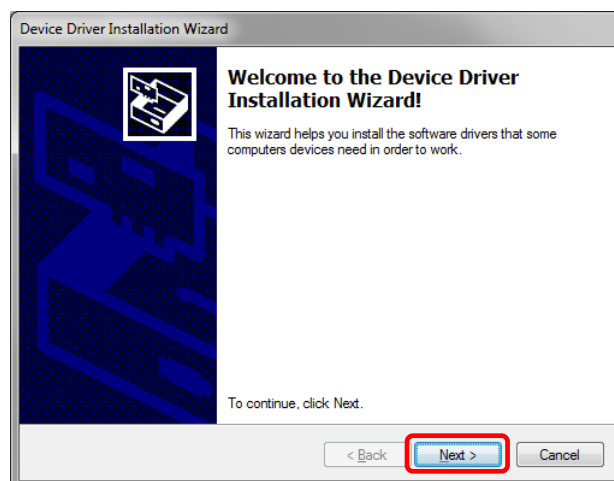


Fig 1.4 Starting of Installation Wizard

If the Windows Security confirmation window appears, click on “Install this driver software anyway”.

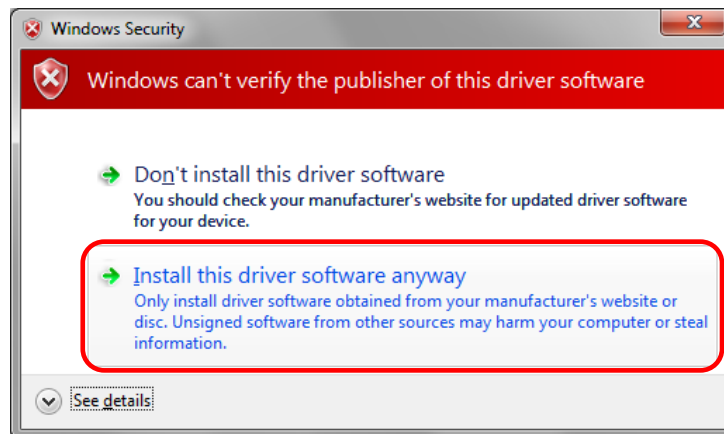


Fig 1.5.i Windows Security confirmation (Windows 7)

In Windows 8 and 10, click on “Install”.

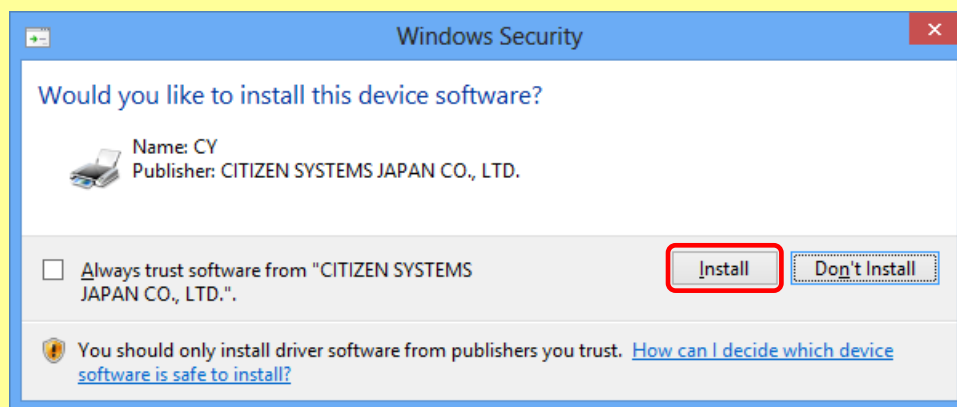


Fig 1.5.ii Windows Security confirmation (Windows 8)

This starts the Driver Package installation. Please wait until it is complete.
When the “Completing the Device Driver Installation Wizard” window appears, click on “Finish”.

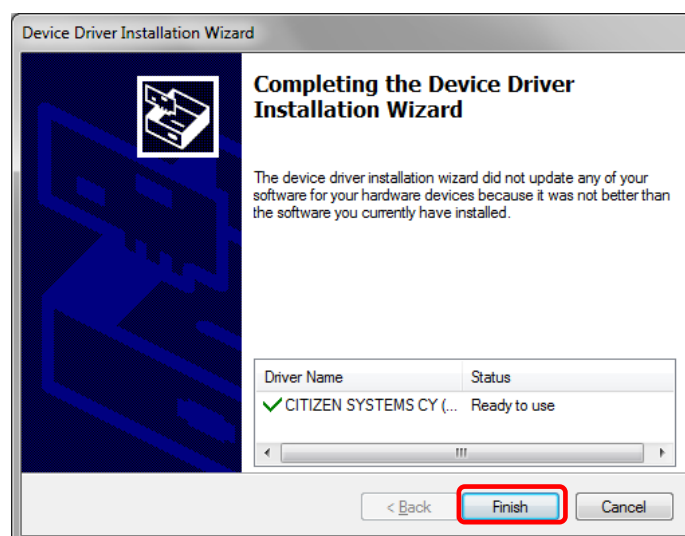


Fig 1.6 Completion of the Installation Wizard

1.3 Installing the Printer Driver

Connect the printer to the computer with the USB cable, and turn the printer power ON.
The printer will be recognized, and the driver installation should begin.

* Please refer to the manual for the CY printer for connection if needed.

When driver installation begins, the message “Installing device driver software” will appear above the task bar.

The message will not appear in Windows 8 and 10. Please turn to page 7.

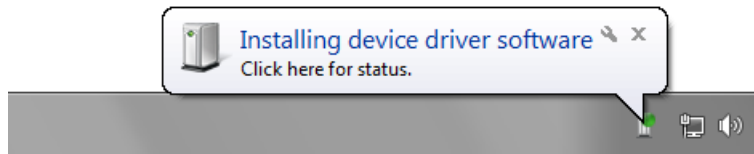


Fig 1.7 Driver Installation message

By clicking on this message, the “Driver Software Installation” window will be opened, and the driver installation status will be shown. Click on “Close” to close the window.

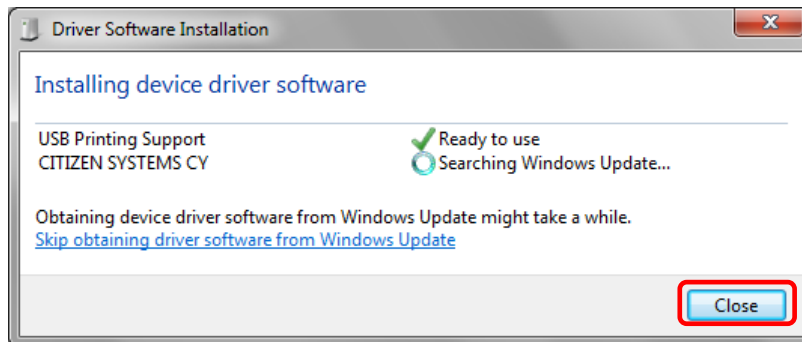


Fig 1.8 Driver Software Installation

* About “Skip obtaining driver software from Windows Update”

If the operating system setting is such that it will get the driver software from Windows Update, it will first search for the driver through Windows Update, so it will take more time to complete the installation. If you skip getting the driver software through Windows Update, the time to complete the installation will be decreased (Depending on the environment, it may take some time to complete the installation).

Click on “Skip obtaining driver software from Windows Update” in the “Driver Software Installation” window.

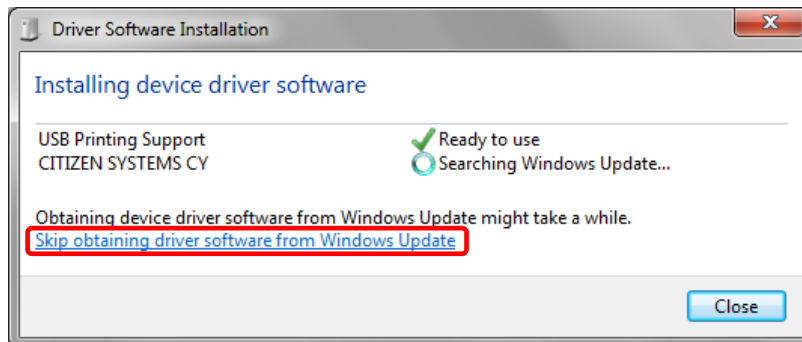


Fig 1.9 Skip obtaining driver software from Window Update

When the confirmation window appears, click on “Yes”.

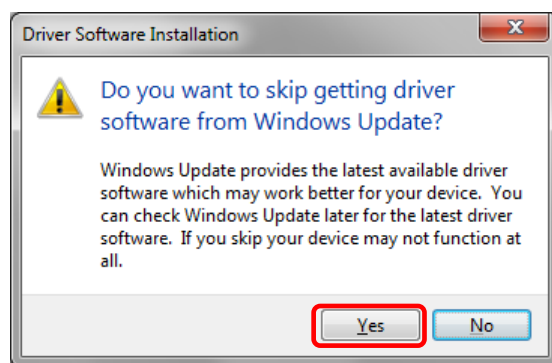


Fig 1.10 Skip getting the driver software from Windows Update

From a beginning of installation after a while, the message “Your device is ready to use” will appear above the task bar, and the printer driver installation will be complete.

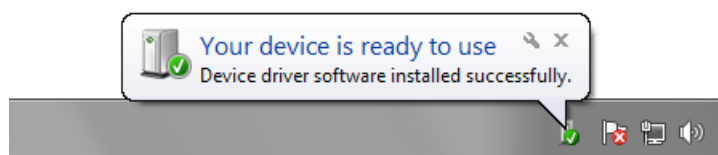


Fig 1.11 Driver Installation Complete message

By clicking on this message, the “Driver Software Installation” window will be opened, and “Your device is ready to use” will be shown. Click on “Close” to close the window.

(If the “Driver Software Installation” window is shown from the start of installation, the message above will not be shown.)

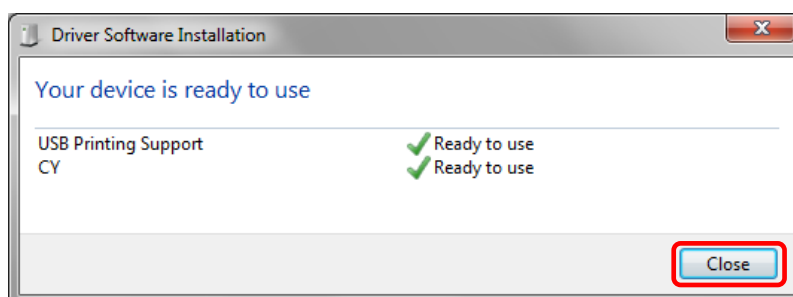


Fig 1.12 Driver Software installation complete

Select “Start”, then “Control Panel”, and open the control panel.

In Windows 8, right click the Start screen, select right-under the "All apps" and select the control panel.

In Windows 10, right click the Start, and then click "Control Panel" to open the Control Panel.

Click on “View devices and printers” in the control panel.

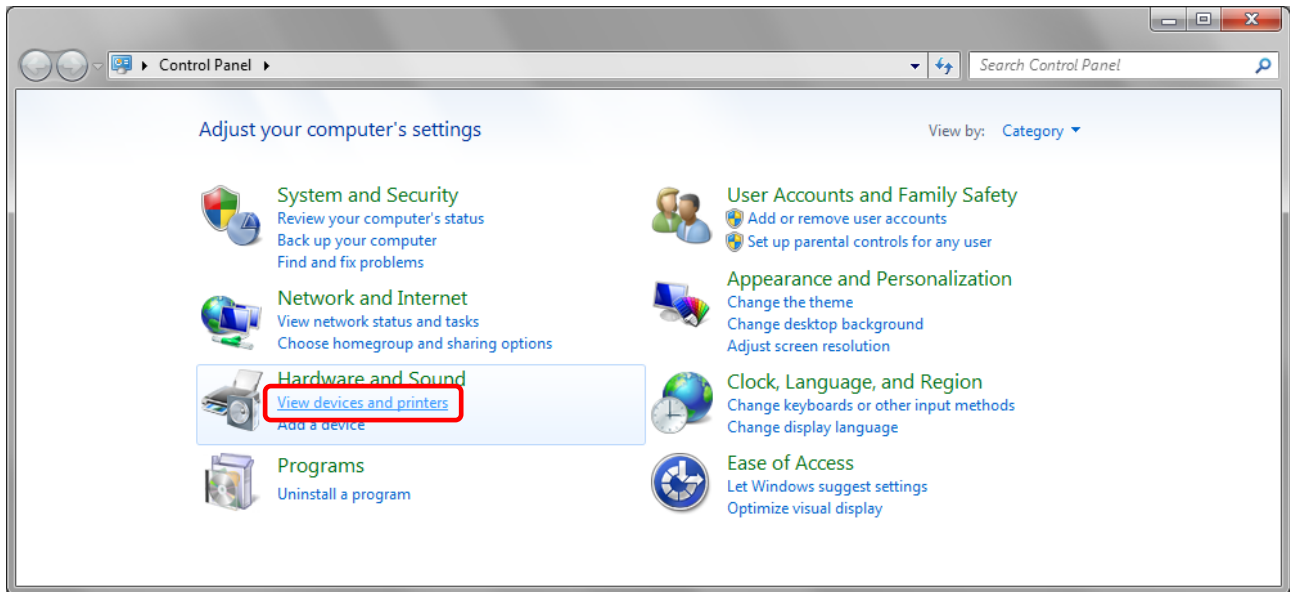


Fig 1.13 Control Panel

Check that the CY is shown in the Devices and Printers window.

Note: In Windows 8 and 10, CY icon does not appear if the printer is offline (if the printer with the power on is not connected).

Now, installation of the CY printer driver is complete.

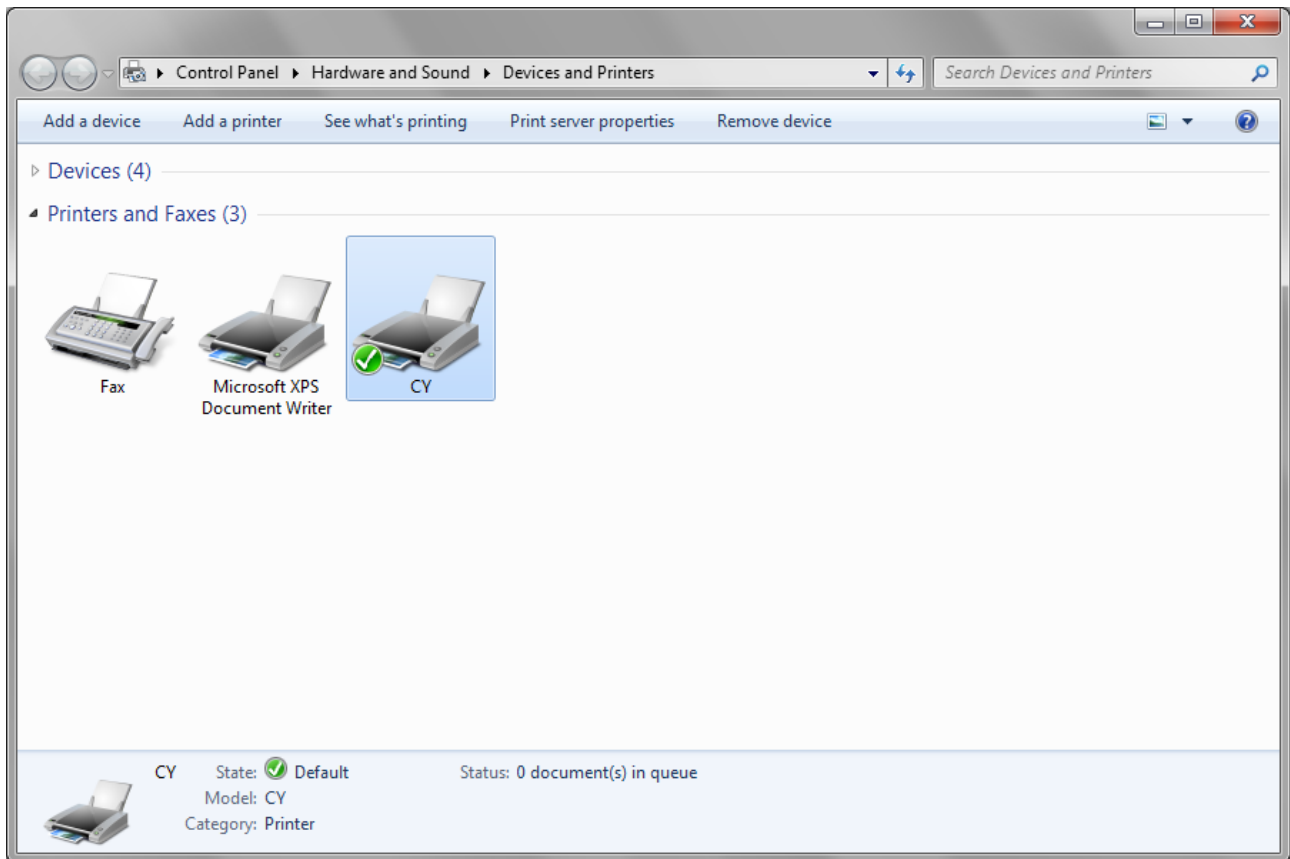


Fig 1.14 Devices and Printers window

After installation of the printer-driver is complete, be sure to reboot the computer.

If the CY printer driver installation was unsuccessful, the message “Device driver software was not successfully installed” will appear above the task bar.

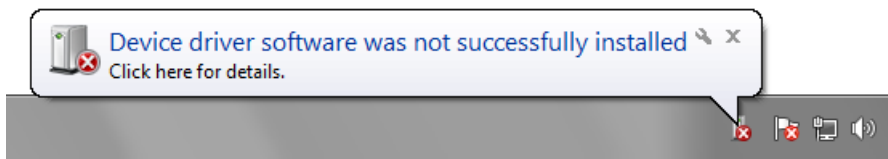


Fig 1.15 Driver Not Installed message

By clicking on this message, the “Driver Software Installation” window will be opened, and the message “Device driver software was not successfully installed” will appear. Click on the “Close” button.

(If the “Driver Software Installation” window is shown from the start of installation, the message above will not be shown.)

If the driver installation was unsuccessful, refer to the next section “1.4 Installing a Driver for an Unspecified Device” and install the printer driver.

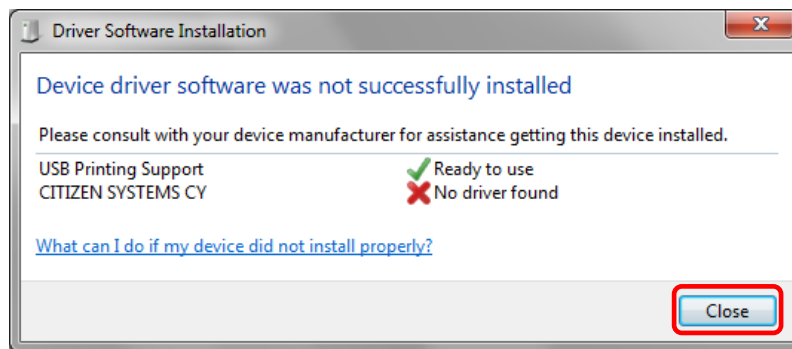


Fig 1.16 If the Driver is not installed successfully

1.4 Installing a Driver for an Unspecified Device

Before installing the driver package, connect the printer (with power ON) to the computer, to create an "Unspecified" device in the "Devices and Printers" window. Using this method, the printer driver can be installed as follows.

Also, when a driver is not installed correctly but the "Unspecified" device is created by the method of connecting a printer after installing the driver package of usual printer driver installation procedure, you can install the driver using the following method.

1. Installing the Driver Package

If the driver package has not been installed yet, follow the procedure shown in "1.2 Installing the Driver Package".

When the driver package has been installed, installation of the printer driver for the Unspecified device may be completed automatically.

2. Installing a driver for an Unspecified device

In the "Unspecified" device of the "Devices and Printers" window, do the right click of the "Photo Printer", and click on the "Troubleshoot" from pull-down menu.

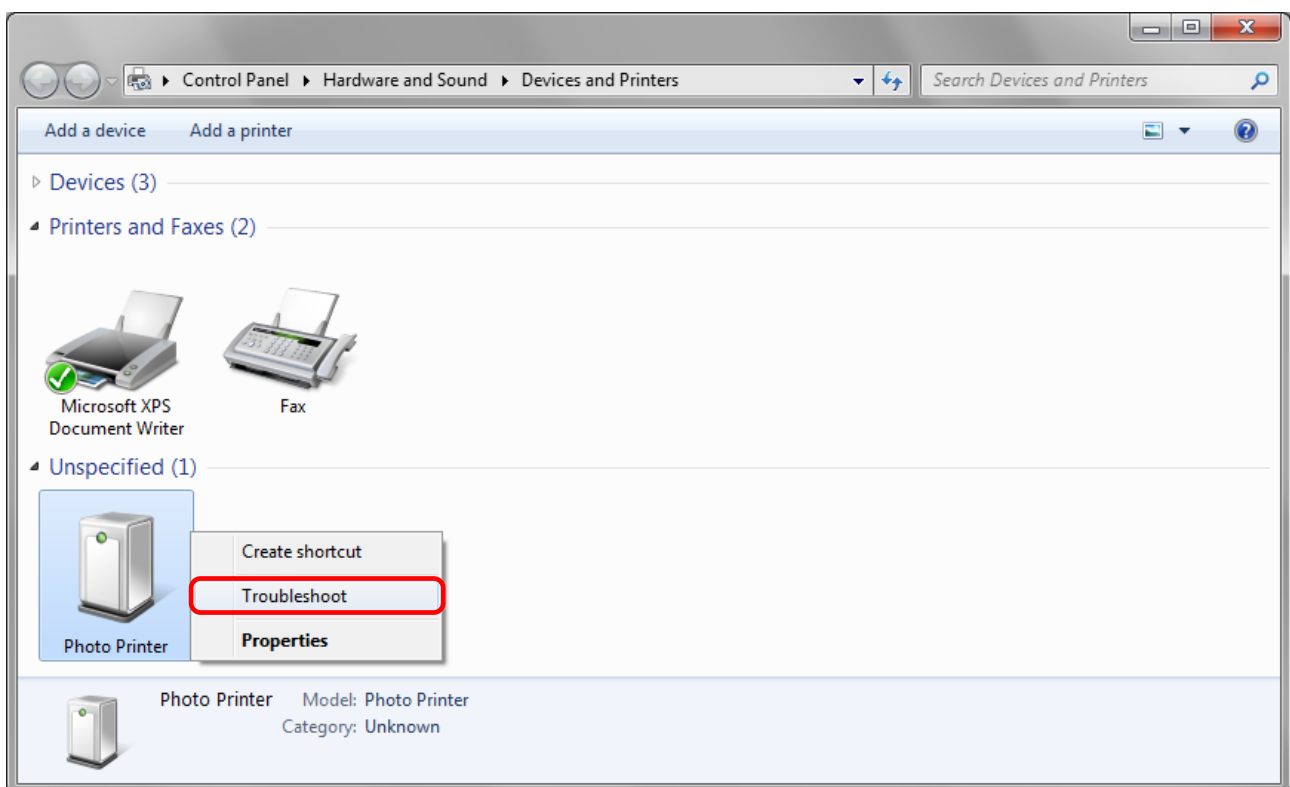


Fig 1.17 Photo Printer as an unspecified device

When the “Install a driver for this device” window appears, click on “Apply this fix”.
It will automatically search for the driver and installation is started.

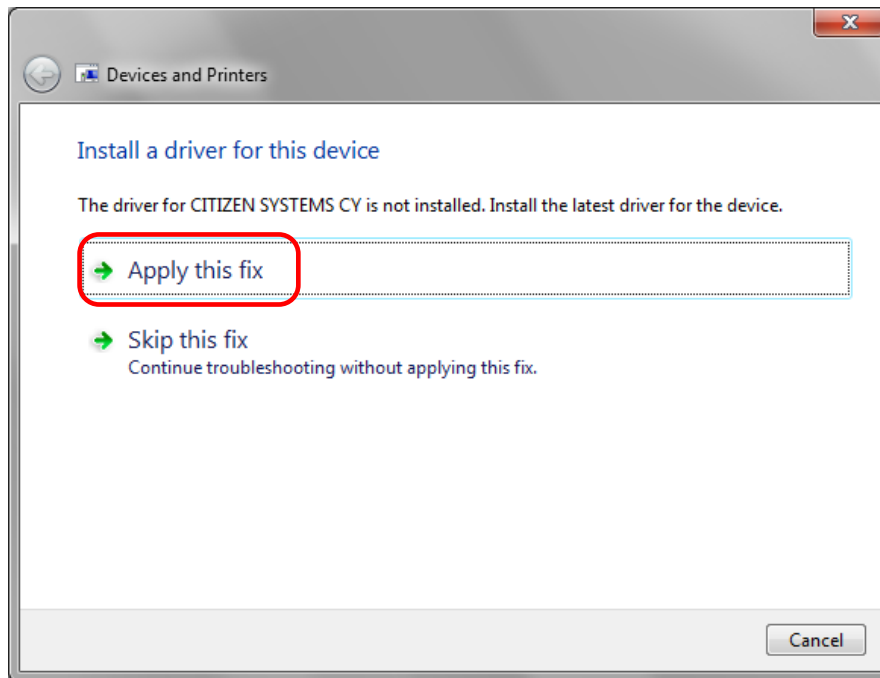


Fig 1.18 Applying the Fix

When the driver has been installed, “Troubleshooting has completed” will appear. Click on “Close the troubleshooter” to end the troubleshooting.

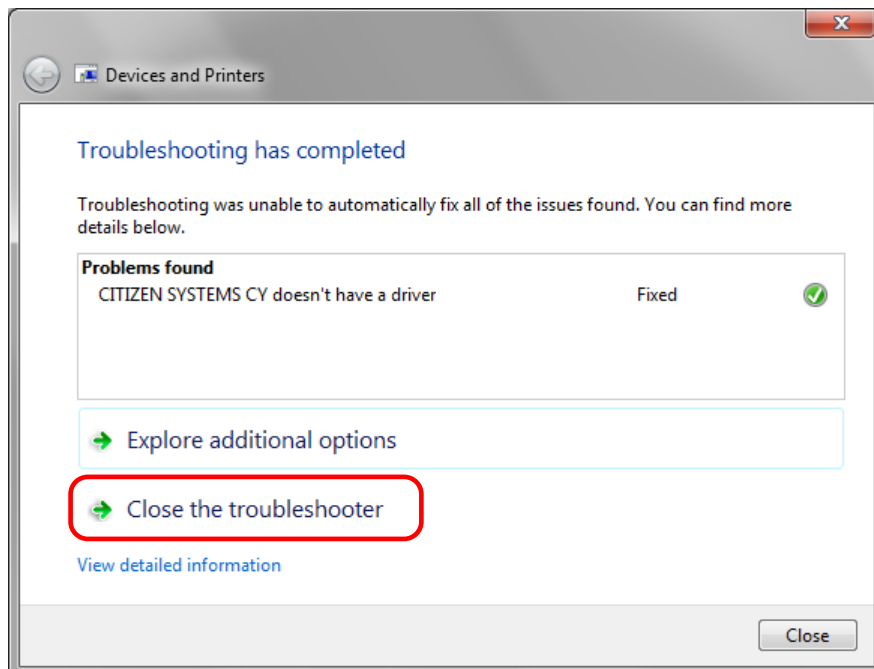


Fig 1.19 Completion of Troubleshooting

Check that the CY is displayed in the “Devices and Printers” window.

Note: In Windows 8 and 10, CY icon does not appear if the printer is offline (if the printer with the power on is not connected).

Now, the CY Printer Driver installation is complete.

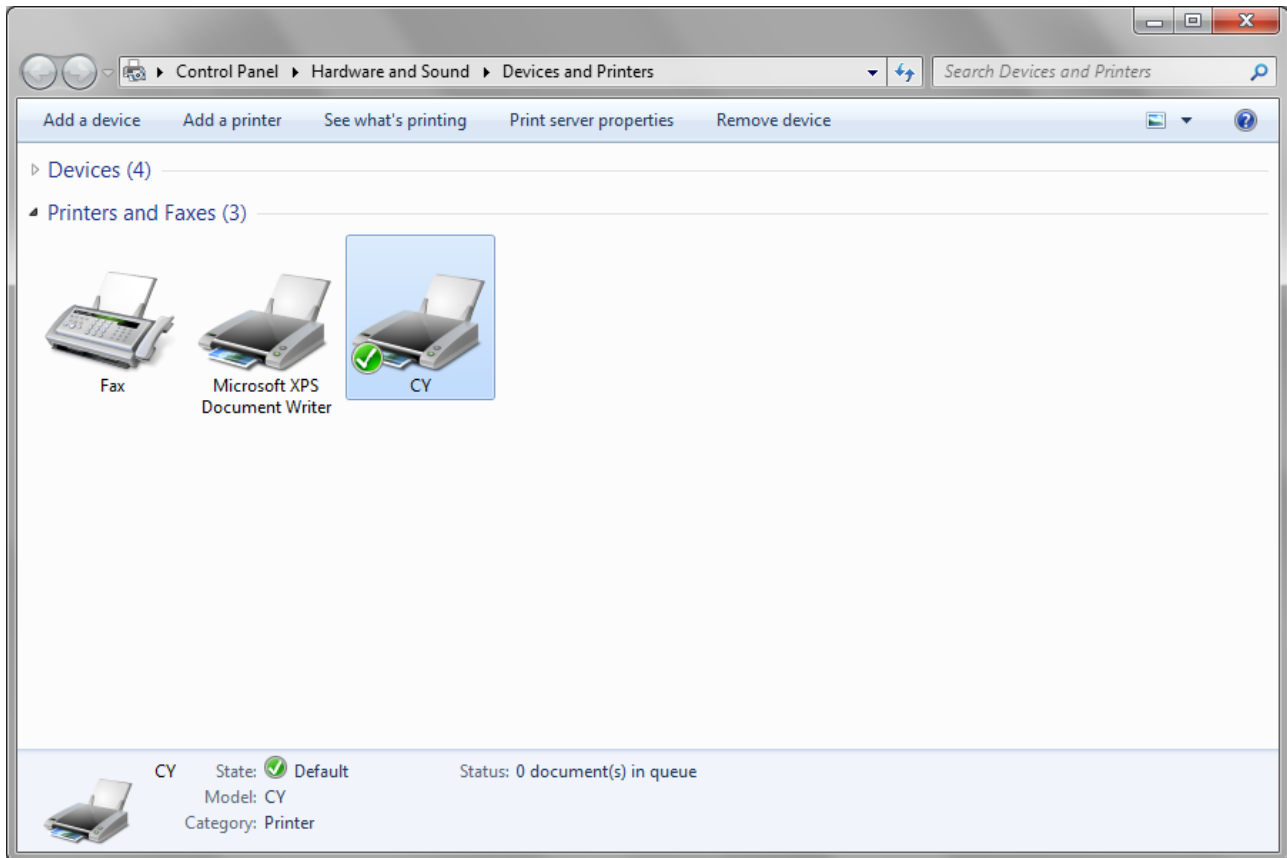


Fig 1.20 Devices and Printers

After installation of the printer-driver is complete, be sure to reboot the computer.

Chapter 2 Properties

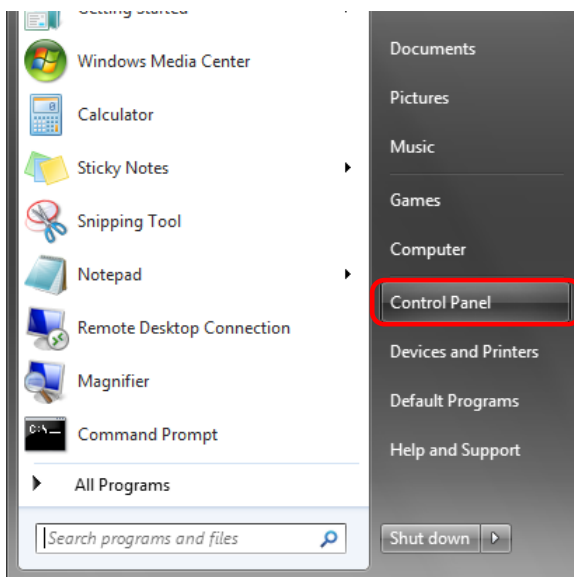
Various printer settings can be made using the CY Driver properties. Before operation, be sure to have a good understanding of the contents. Login by administrator authority is required for operation. Depending on application of the use, operation from print setting of the application is necessary.

2.1 Opening Printer Properties

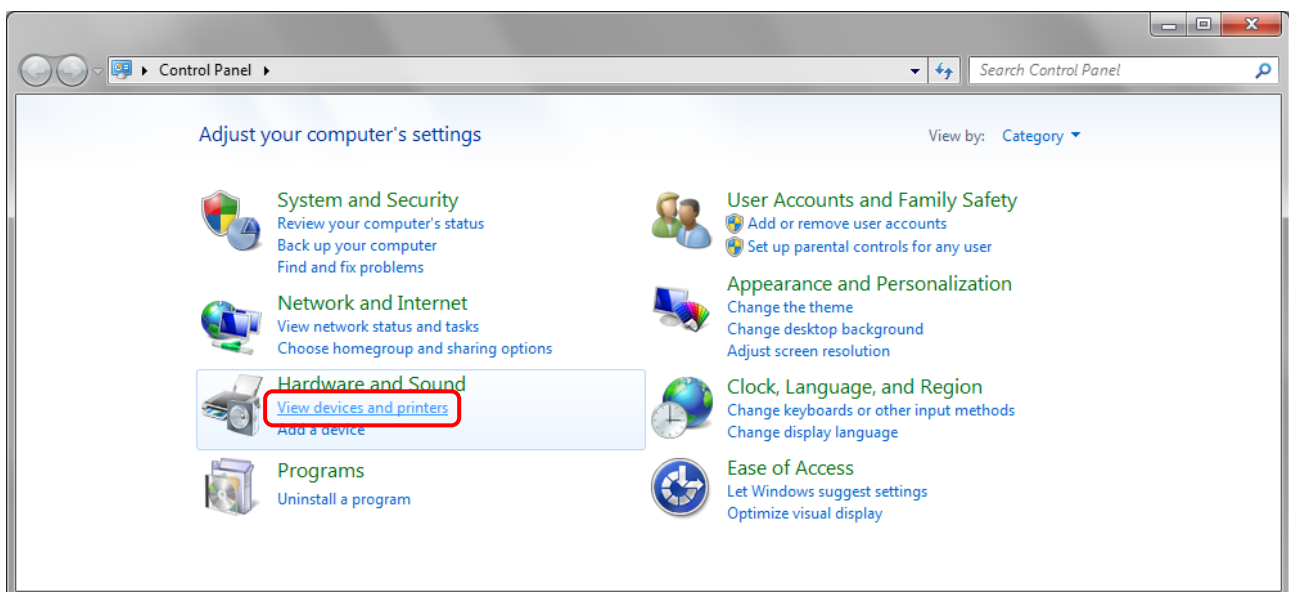
1. Click Start ⇒ Control Panel ⇒ open the control panel

In Windows 8, Right click on the Start screen ⇒ All apps ⇒ Control Panel ⇒ open the control panel

In Windows 10, right click the Start, and then click "Control Panel" to open the Control Panel.

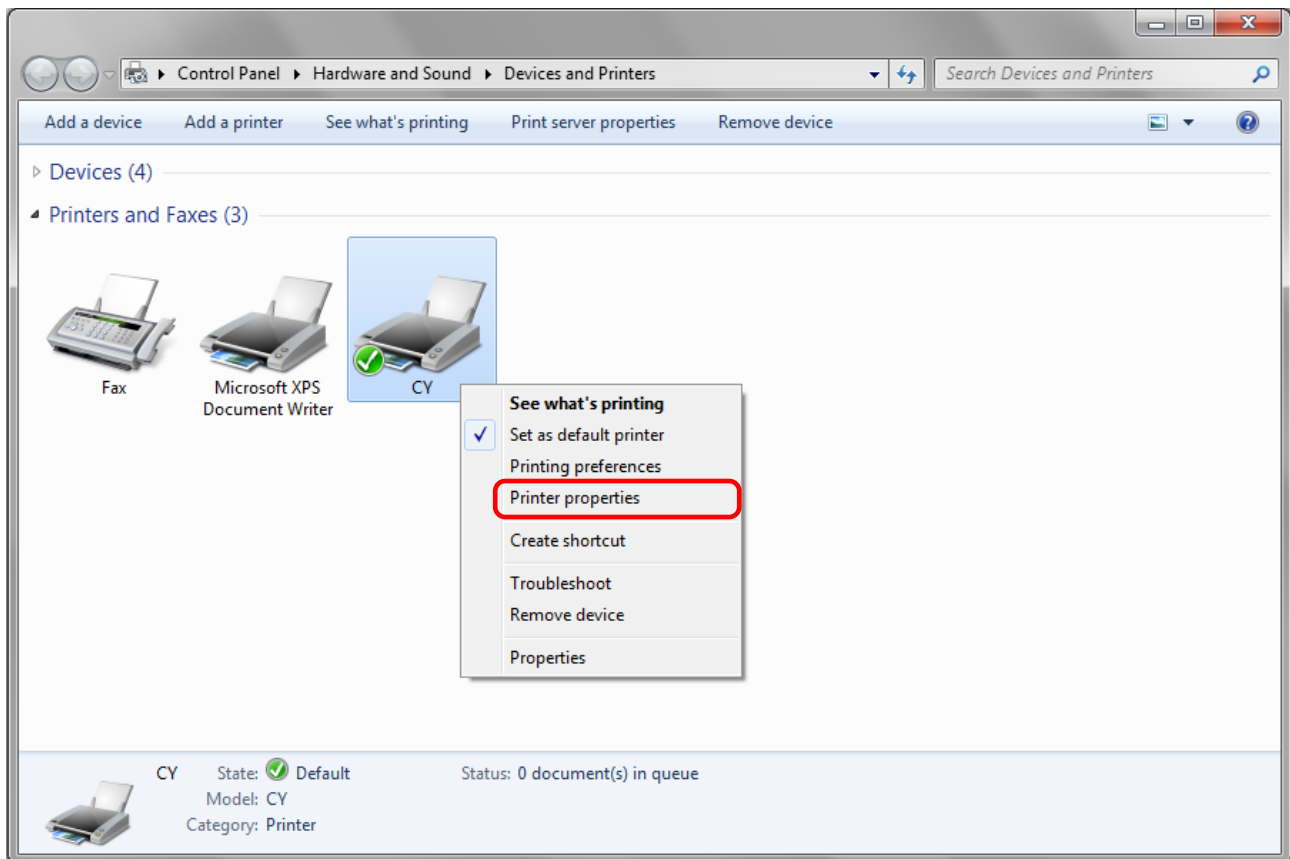


2. In the control panel, select View devices and printers ⇒ open the Devices and Printers window

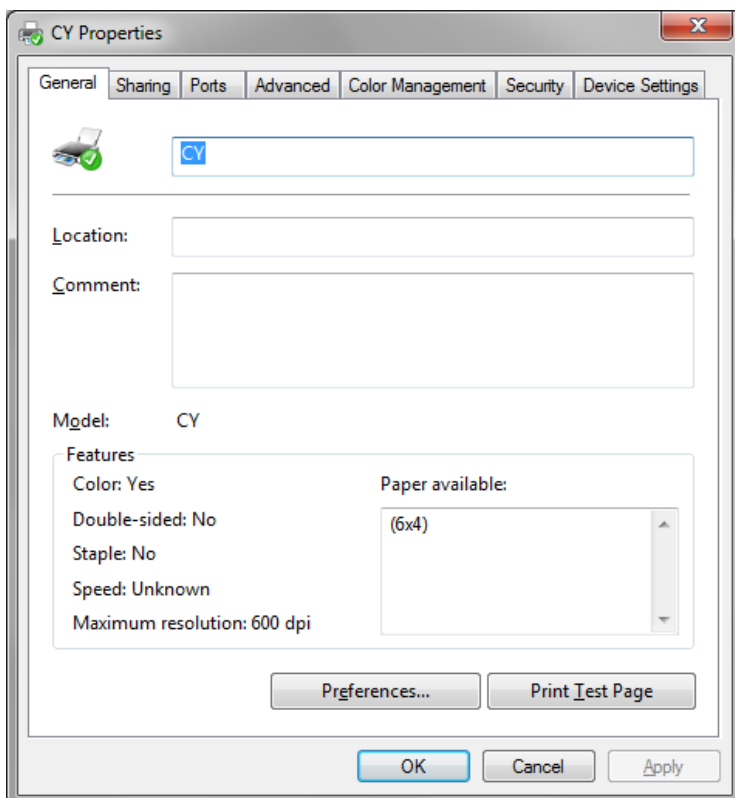


3. Right-click on the CY icon, and from the pull-down menu select Printer properties ⇒ open the Properties window

Note: In Windows 8 and 10, CY icon does not appear if the printer is offline (if the printer with the power on is not connected).



4. The CY Properties window will appear.



2.2 Explanation of Print Setting Functions

From the Properties window, by selecting Preferences you can make various print settings.

2.2.1 Layout

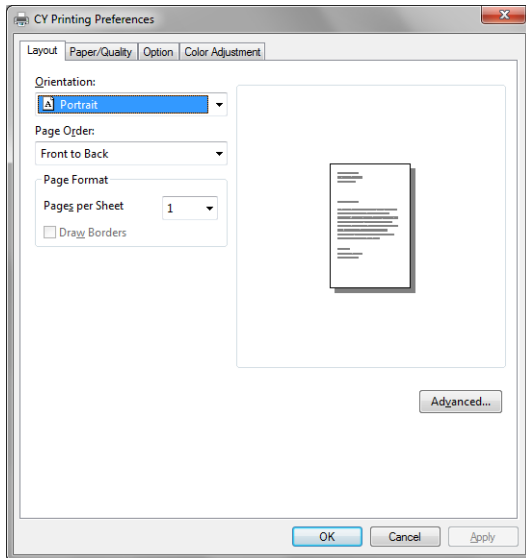


Fig 2.2.1 Layout tab

Orientation

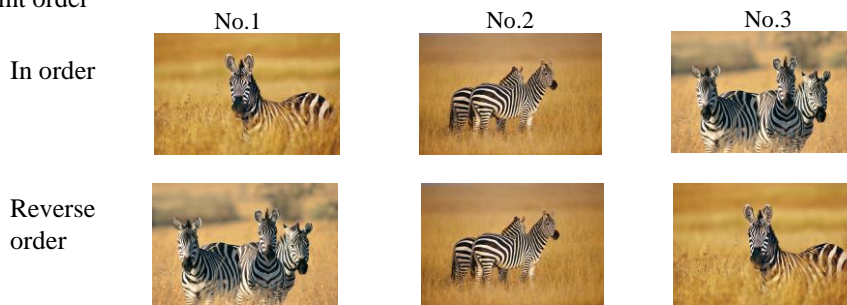
Assign print orientation as Landscape or Portrait.

Refer to [2.6 Print direction](#).

Page Order

When printing multiple images in the application, you can set the order.

Ex.) Print order

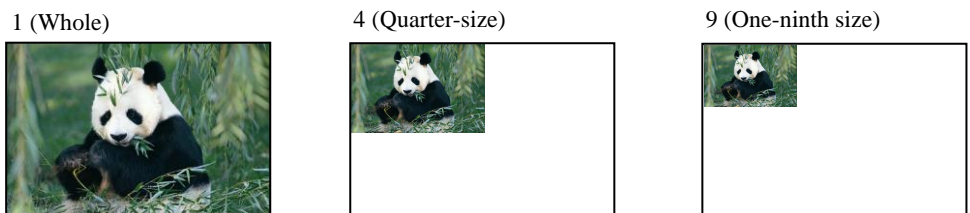


Pages per Sheet

Prints the designated fractional size. Normally you should specify a value of 1.

(If you want to specify other than 1, please use the Print Quality settings to 300x300dpi or 600x600dpi)

Ex.) Fractional size



2.2.2 Advanced Options

By selecting [Advanced] in the Layout window, various settings can be made using Advanced Options.

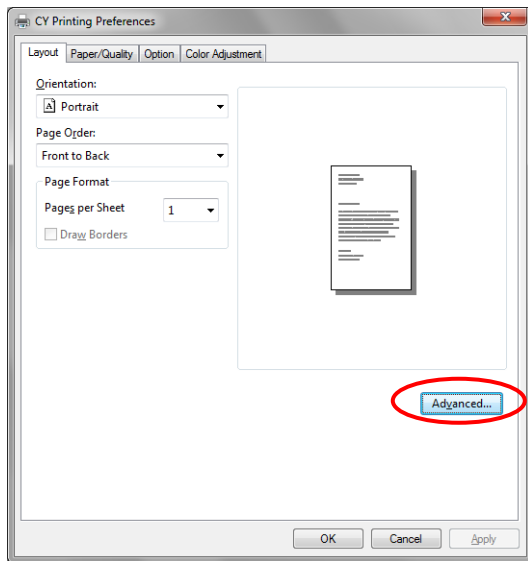


Fig 2.2.2.1 Advanced Settings

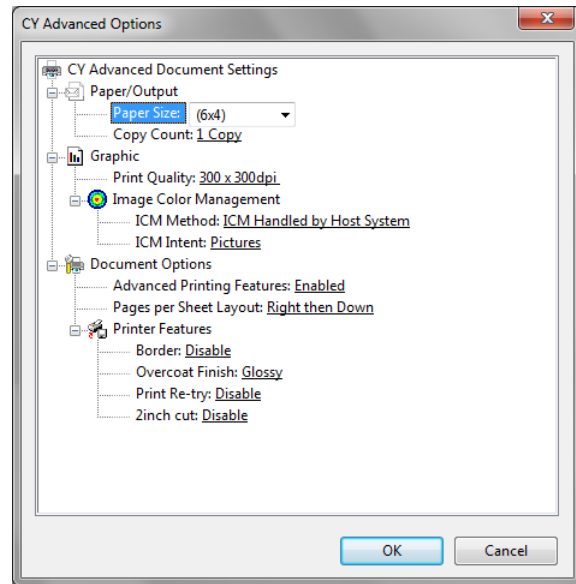


Fig 2.2.2.2 Advanced Options tab

Paper Size

You can designate the paper size. Please match the paper size to the media size with which the printer is equipped

Copy Count

You can designate the number of times an image will be printed.

Print Quality

You can designate the print quality.

Print Quality	Function
300 x 300dpi	Printing in the high-speed mode
300 x 600dpi	Printing in the high-quality mode * If the application can not set an asymmetric aspect resolution, please set the 600x600dpi. *When you execute the "Print Test Page" in printer properties in Windows 8 and 10, depending on the specifications of the OS, is printed the aspect ratio of the printer mark is different.
600 x 600dpi	Printing in the high-quality mode (Printer driver converts to 300x600dpi data, and sends it to the printer.)

ICM Method

ICM Method	Function
ICM Disabled	2.2.4 Synchronous with "Color Management: None" in paper option.
ICM Handled by Host System	2.2.4 Synchronous with "Color Management: ICM" in paper option. Performs color management with the driver.
ICM Handled by Printer	This is the same as setting "ICM Handled by Host System".

ICM Intent

This designates the rendering method when using ICM. Always have the ICC profile for the CY set to "Picture". Please do not use it at other settings.

Advanced Printing Features

Always have it set to "Enabled". Please do not use it at other settings.

Pages per Sheet Layout

The layout direction of a picture is specified, when Pages per Sheet setting is multiple pages per sheet.

Border

Synchronous with the border option in the paper option.

Overcoat Finish

The overcoat finish for the printed surface can be selected from the following two types.

Overcoat Finish	Function
Glossy	This finishes the print with a glossy surface.
Matte	This finishes the print with a matte (non-glossy) surface.

Print Re-try

This sets up whether print data in a printer buffer when the error of a printer occurs is printed after error recovery, or it does not print.

Print Re-try	Function
Disable	Printing data in a printer buffer is cleared in the case of a printer error. After an error recovery, the cleared image data must be re-sent. When using an application that has an error recovery function, select this option.
Enable	Printing data in a printer buffer is held in the case of a printer error. After an error recovery, the print process resumes with the saved data. However, if the power is turned OFF, the data will not be saved.

According to the contents of a printer error, the power supply of a printer needs to be re-switched on for error recovery. In this case, it is not dependent on a setup of Print Re-try, and printing data in a printer buffer is cleared. Operation by Print Re-try setup in each error is shown below.

Contents of an error	Print Re-try setup is "Disable"	Print Re-try setup is "Enable"
Paper End	Please resend picture data not printed after error recovery.	Printing processing is resumed from data currently held in a printer buffer after error recovery. When paper initialization operation is performed, it is printed after paper initialization operation.
Ribbon End		
Cover Open		
Paper Jam (*1)		
Ribbon Error (*1)		
Paper Definition Error	For error recovery, the power supply of a printer once needs to be turned OFF. Therefore, print data in a printer buffer is cleared by power-supply OFF of a printer regardless of a setup of the Print Re-try function.	For error recovery, the power supply of a printer once needs to be turned OFF. Therefore, print data in a printer buffer is cleared by printer power-supply OFF even if the Print Re-try function is set to "Enable".
Data Error		
Head Position Error		
Power Supply Fan Stop		
Cutter Error		
Head Voltage Error		
Abnormal Head Temp.		
Abnormal Media Temp.		
Ribbon Tension Error		
RFID Module Error		
System Error	Please resend picture data not printed after printer re-starting.	Please resend picture data not printed after printer re-starting.

*1: After an error stop, a paper or a ribbon should perform removal work of an error factor according to a printer user's manual.

2inch cut (Depending on the version of printer firmware being used, "Disable" may be the only option.)

In the case of the specific paper size, it sets up whether it cuts into two or more sheets by the length of 2 inches.

2inch cut	Function
Disable	It cuts in usual size.
Enable	By the length of 2 inches, in the case of (6x4) and PR(4x6) size, it cuts to two sheets, and, in the case of (6x8) size, it cuts to four sheets.

<Multiple layout>

When the CY is using 6x8 size media, 2 image layout is possible.

With the printer driver paper setting, multi-image layout is made possible, and the image sizes are as follows.

Layout designation

Driver paper setting (layout)	Paper Orientation	Image size width x height (mm)	Using media
(6x4) x 2	Portrait	(156.1x105.0) x 2	6x8
	Landscape	(105.0x156.1) x 2	
PR (4x6) x 2	Portrait	(105.0x156.1) x 2	6x8
	Landscape	(156.1x105.0) x 2	
Image layout median size		2.54	

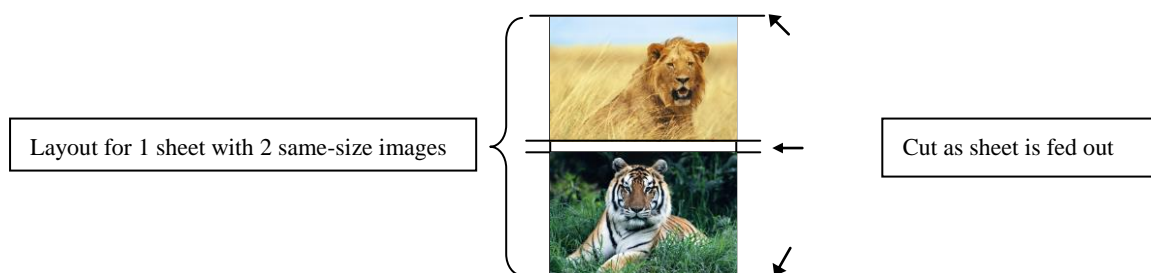
Multiple layout is possible under the following conditions.

- 1.The printer is using 6x8 size media.
- 2.The printer driver paper size is set to one of the above sizes.
- 3.Multiple images are sent from the application.

Note) Because the multi-image layout occurs on a per job basis, this works when there are multiple images for 1 job.
If you want to print the same image, be sure to send the image data for each copy to be printed. The printer prints 2 images in one operation, and the paper is cut as it is fed out.

<Multi-image layout patterns>

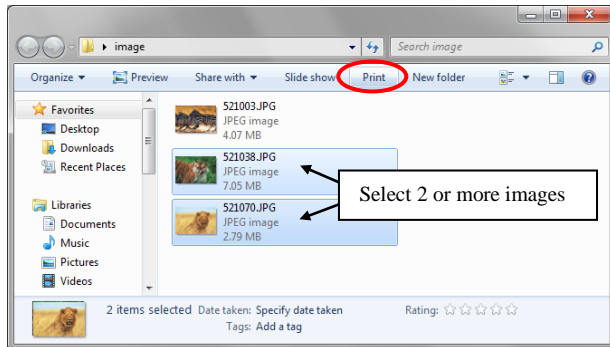
The following is possible for the multi-image layout pattern.



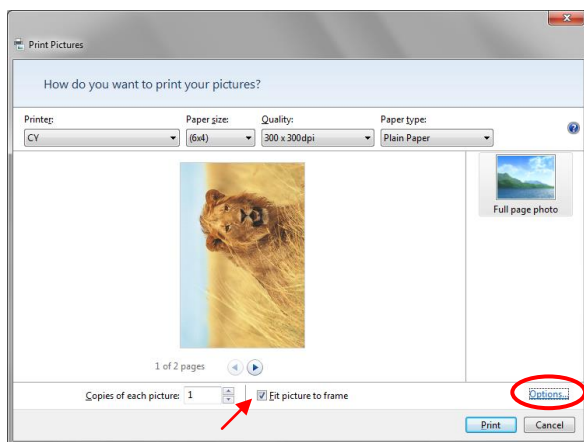
<Example of Application Use>

This is an example using Windows Explorer

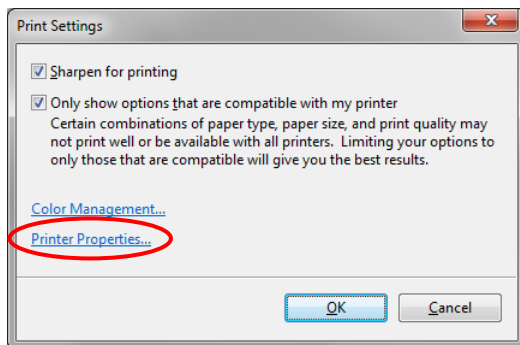
Step 1. Select 2 or more images⇒Click “Print”.



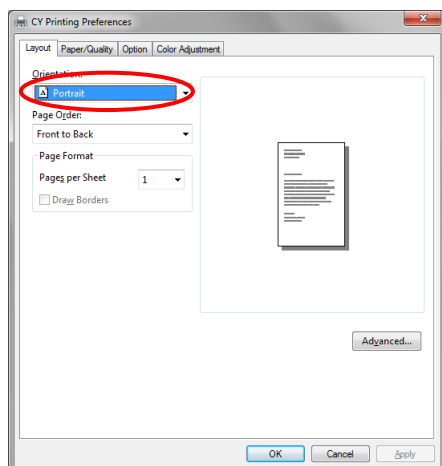
Step 2. Check “Fit picture to frame” and click “Options”.



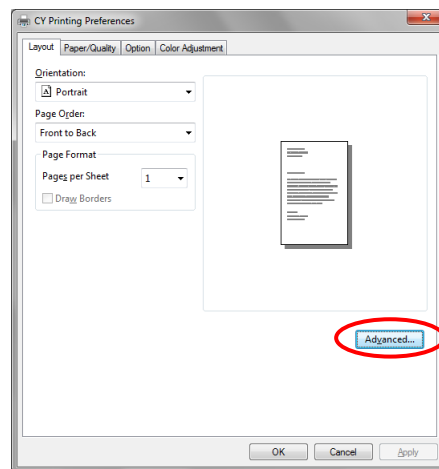
Step 3. Click on “Printer Properties”.



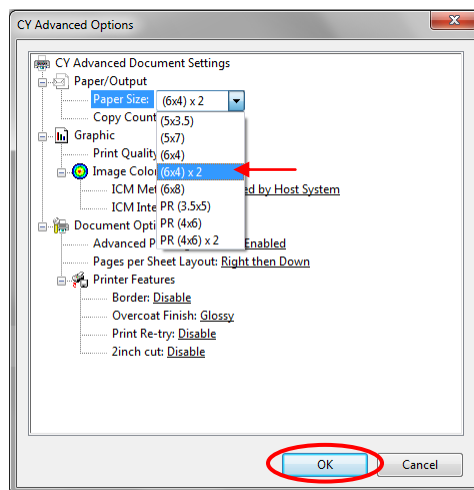
Step 4. From the “Orientation” pull-down menu, select “Portrait”.



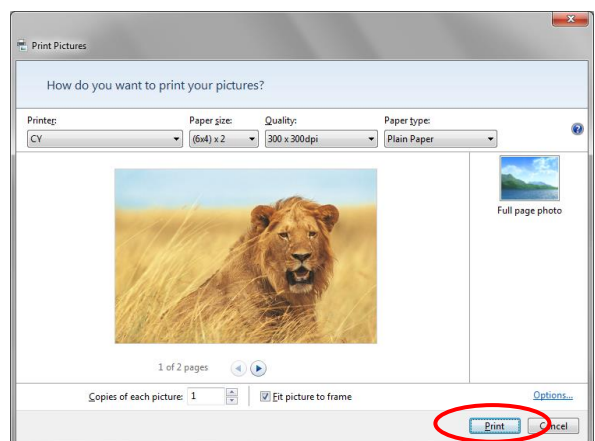
Step 5. Click on “Advanced”.



Step 6. Set the Paper Size to “(6x4)x2”. Then click “OK” on the windows from steps 6⇒5, returning to the window displayed in Step 2.



Step 7. Click on “Print”.



2.2.3 Paper/Quality

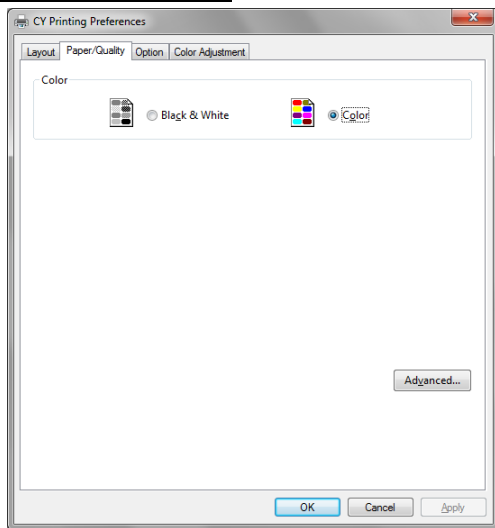


Fig 2.2.3 Paper/Quality tab

Color Please set to color print. Do not use for black and white printing.

2.2.4 Option

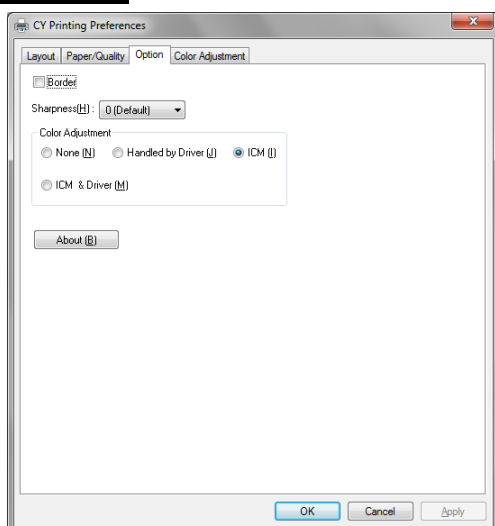


Fig 2.2.4.1 Option tab

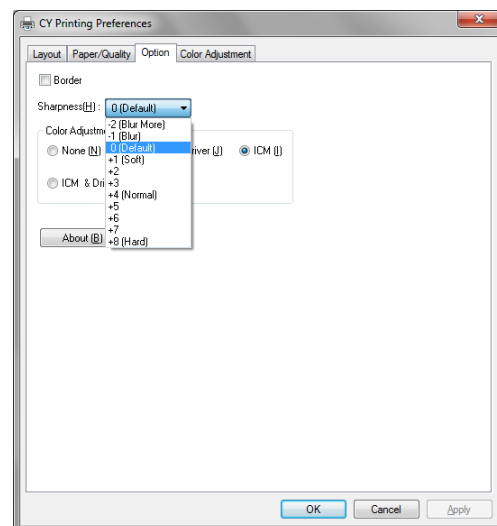


Fig 2.2.4.2 Sharpness setting

Border

Designates yes or no for border (check means with border). Synchronous with border in the Advanced Settings.

Sharpness

Processes for 11 sharpness levels (Fig 2.2.4.2). 0(Initial setting) means there is no sharpness processing. Minus(-) blurs the image, and plus(+) increases the sharpness.

Color Adjustment

None

Synchronous with the ICM Method in the Advanced Settings. Checking this item disables ICM and the Color Adjustment tab, and color management does not occur from the driver.

Handled by Driver

Checking this item disables ICM and [2.2.5 Color Adjustment](#) is enabled. The adjustment values for gamma, brightness, contrast, and chroma are shown.

ICM

Synchronous with the ICM Method in the Advanced Settings (ICM Handled by Host System). Checking this item enables color management from the driver.

ICM & Driver

If you check this, ICM (color management) and color adjustment will be enabled.

About

Displays the driver version.

2.2.5 Color Adjustment

If you check Handled by Driver in [2.2.4 Option](#), the respective color adjustment values in the Color Adjustment tab are reflected in the image.

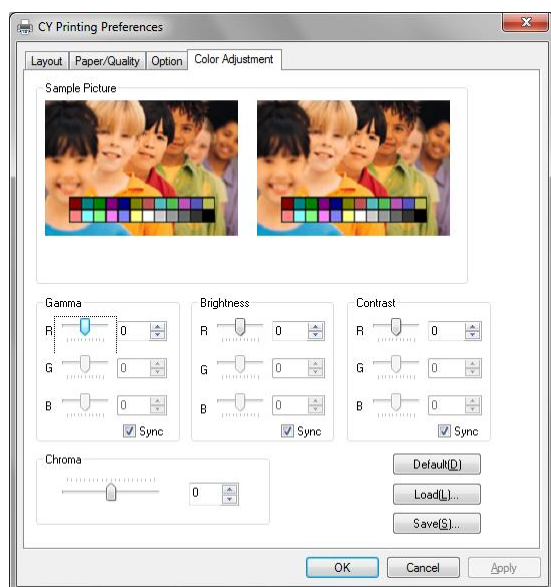


Fig 2.2.5 Color Adjustment tab

Setting ranges in the Color Adjustment tab are as follows:

Adjustment Item	Adjustment Value
Gamma	-100(dark) ~ 100(light) (0 means no adjustment, Gamma 2.0 ~ 0.5) Adjusts the density of the highlights in the image. The greater the gamma value, the brighter the highlights. Synchronous check box ON : Sets RGB at the same value OFF:Sets RGB at a different value
Brightness	-100(dark) ~ 100(light) (0 means no adjustment) Adjusts the brightness of the image. The larger the value, the greater the overall brightness of the image. Synchronous check box ON :Sets RGB at the same value OFF:Sets RGB at a different value
Contrast	-100(weak) ~ 100(strong) (0 means no adjustment) Adjusts the contrast of the image. The larger the value, the greater the contrast. Synchronous check box ON : Sets RGB at the same value OFF: Sets RGB at a different value
Chroma	-100(weak) ~ 100(strong) (0 means no adjustment) Adjusts the color saturation of the image.

2.3 Default Values for Various Settings

Default values for each option (at the time of installation) are shown below. If the printer driver does not work correctly after changing the options, please return the options to the default settings.

Note) According to the Service Pack and use environment of OS, the default value at the time of installation may differ from the following chart.

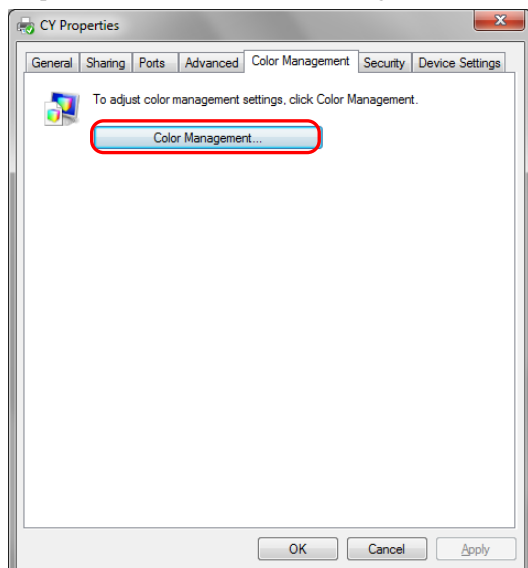
Tab	Options			Default	
Layout	Orientation			Portrait	
	Page Order			Front to Back	
	Pages Per Sheet			1	
Paper/Quality	Color			Color	
Option	Border			Disable	
	Sharpness			0 (Default)	
	Color Adjustment			ICM	
Color Adjustment	Gamma			0	
	Brightness			0	
	Contrast			0	
	Chroma			0	
Advanced (Click [Advanced] button of Layout tab)	Paper/Output	Paper Size		(6 x 4)	
		Copy Count		1	
	Graphic	Print Quality		300 x 300dpi	
		Image Color Management	ICM Method		ICM Handled by Host System
			ICM Intent		
			Document Option	Advanced Printing Features	
	Pages per Sheet Layout			Right then Down	
	Printer Features	Border		Disable	
		Overcoat Finsh		Glossy	
		Print Re-try		Disable	
		2inch cut		Disable	

Chart 2.3 Print Setting Default Values

2.4 Color Management

In [Color Management], this designates the color profile. Default at installation associates [CY_xxxx.icc].
xxxx is a 4-digit number that refers to the version.

Step 1. Select “Color Management” tab in “Printer Properties”, and click on “Color Management” button.



Step 2. Choose printer: CY from a device.

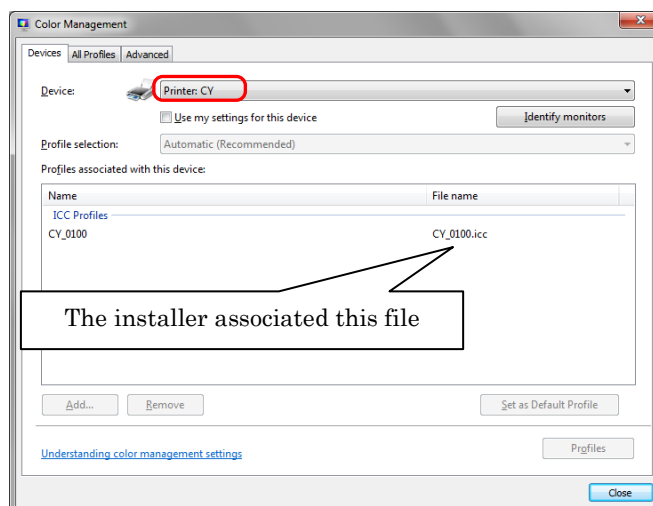


Fig 2.4 Color Management

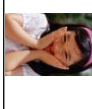
2.5 Print Area

Depending on the paper size designated at the driver, the image size and dot count will be as follows.

Paper	Paper Orientation	Image size (width x height)		Image pixel amount (width x height)		
		(inch)	(mm)	300x300 DPI	300x600 DPI	600x600 DPI
(5x3.5)	Portrait	5"x 3.5"	131.1 x 92.1	1548 x 1088	1548 x 2176	3096 x 2176
	Landscape	3.5"x 5"	92.1 x 131.1	1088 x 1548	2176 x 1548	2176 x 3096
(6x4)	Portrait	6"x 4"	156.1 x 105.0	1844 x 1240	1844 x 2480	3688 x 2480
	Landscape	4"x 6"	105.0 x 156.1	1240 x 1844	2480 x 1844	2480 x 3688
(5x7)	Portrait	5"x 7"	131.1 x 181.0	1548 x 2138	1548 x 4276	3096 x 4276
	Landscape	7"x 5"	181.0 x 131.1	2138 x 1548	4276 x 1548	4276 x 3096
(6x8)	Portrait	6"x 8"	156.1 x 206.2	1844 x 2436	1844 x 4872	3688 x 4872
	Landscape	8"x 6"	206.2 x 156.1	2436 x 1844	4872 x 1844	4872 x 3688
PR (3.5x5)	Portrait	3.5"x 5"	92.1 x 131.1	1088 x 1548	2176 x 1548	2176 x 3096
	Landscape	5"x 3.5"	131.1 x 92.1	1548 x 1088	1548 x 2176	3096 x 2176
PR (4x6)	Portrait	4"x 6"	105.0 x 156.1	1240 x 1844	2480 x 1844	2480 x 3688
	Landscape	6"x 4"	156.1 x 105.0	1844 x 1240	1844 x 2480	3688 x 2480

2.6 Print Direction

Regarding the print direction setting, the relationship between the application-generated image and the print (feed direction) is as shown in the following chart. The generated image is the image generated through enlargement/reduction to fit the size shown in 2.5 Print Area, without having the application rotate the original image.

Original Image	Driver setting						
	Orientation setting	Paper setting					
		(5x3.5) (6x4) (6x4)x2		PR (3.5x5) PR (4x6) PR (4x6)x2		(5x7) (6x8)	
		Generation image	Output image (direction↓)	Generation image	Output image (direction↓)	Generation image	Output image (direction↓)
	Portrait						
	Landscape						
	Portrait						
	Landscape						

Chapter 3 Updating the Driver

In order to update the printer driver, follow the steps shown below.

1. Driver Removal

- (1) Before removing the printer-driver, shut down all other applications. Also, in the “Devices and Printers” window, select the printer icon of the printer you want to remove, check the bottom of the window that there are no documents in queue, and start removal of the driver.

Note: In Windows 8 and 10, CY icon does not appear if the printer is offline (if the printer with the power on is not connected). If you can not connect to the printer with the power on, remove the device in the procedure on the next page.

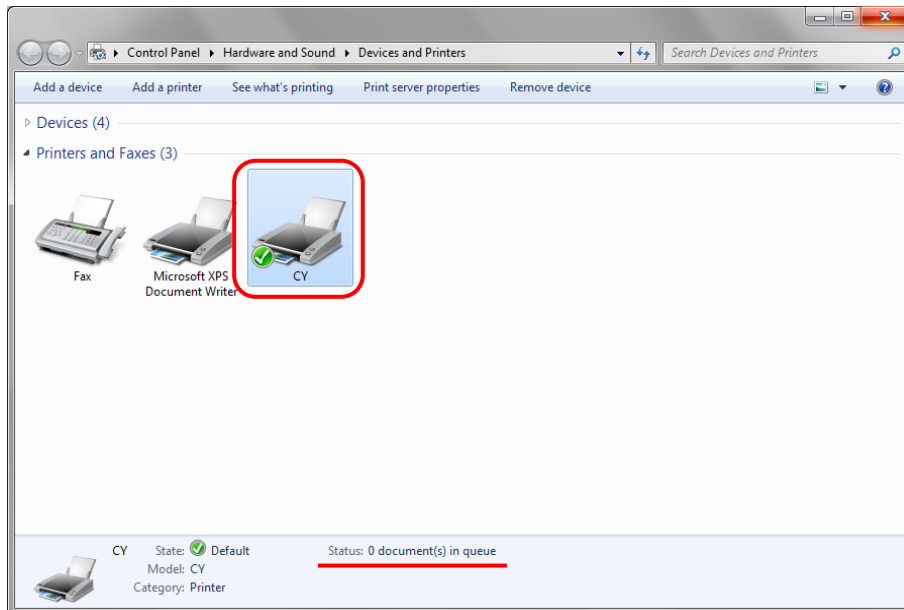


Fig 3.1 “Devices and Printers” window with the CY icon clicked

- (2) Select “Start”–“Control Panel”, and click on “View devices and printers” in the control panel.

In Windows 8, right click on the Start screen, select the right-under "All apps", select "Control Panel", click on "View devices and printers" in the Control Panel.

In Windows 10, right click the Start. In the bottom right area, select "All Apps", and then select "Control Panel". In the Control Panel, click "Devices and Printers".

From the “Devices and Printers” window, select the CY printer, display the pull-down menu with the right click, and click on “Remove device”.

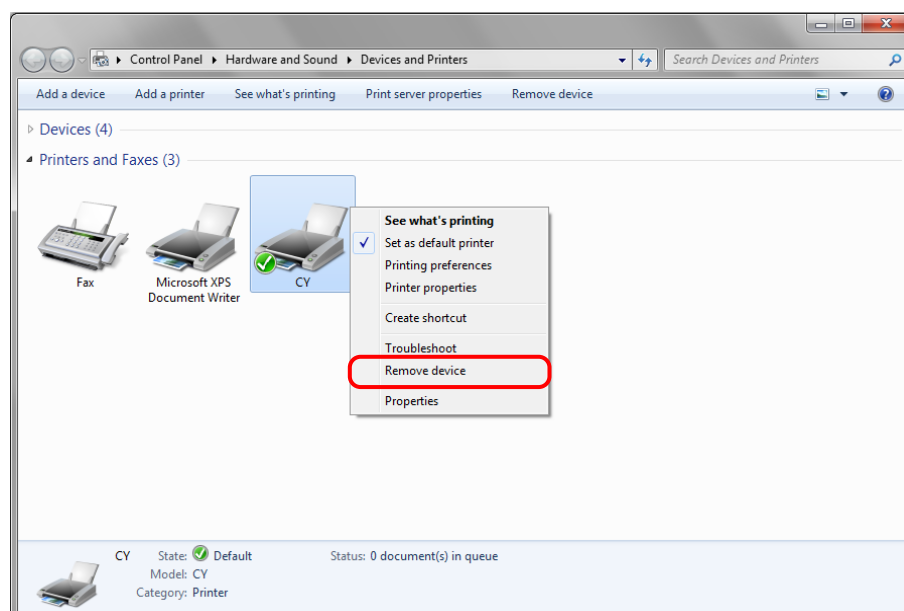


Fig 3.2 Devices and Printers window; CY right-clicked menu

In Windows 8 and 10, CY icon does not appear if the printer is offline (if the printer with the power on is not connected). If you can not connect to the printer with the power on, remove the device in the following procedure.

(i) Right click an empty area of the "Devices and Printers" window, select the "Device Manager".

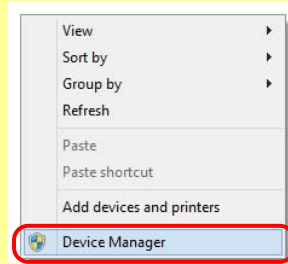


Fig 3.2.i Devices and Printers window; An empty area of the screen right clicked menu

(ii) Click on the check "Show hidden devices" in the menu "View".

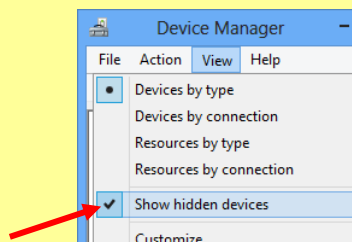


Fig 3.2.ii "Show hidden devices" menu

(iii) Right click on the "CY" of "Printers", select "Uninstall".

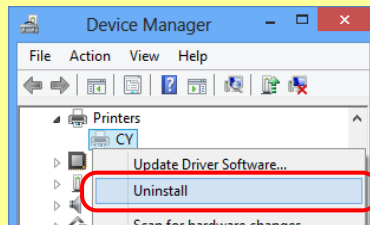


Fig 3.2.iii Devices Manager window; Printers – CY right clicked menu

(iv) When the "Confirm Device Uninstall" window appears, click on "OK".

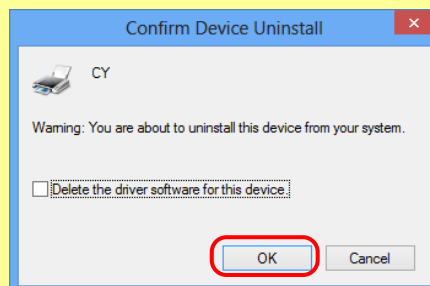


Fig 3.2.iv Confirm Device Uninstall window

(3) When “Are you sure you want to remove this device?” appears, click on “Yes”.

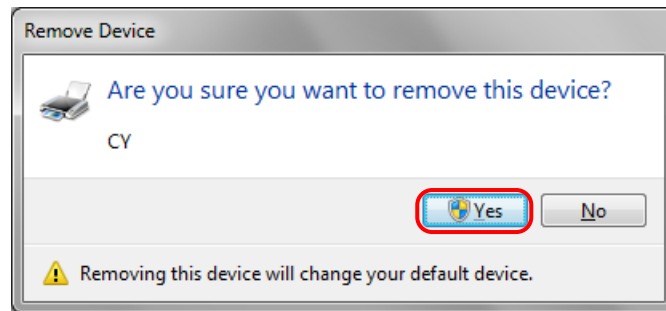


Fig 3.3 Remove device confirmation window

(4) After the CY printer has been removed, select another printer (for example: Fax), and click on “Print server properties” in the menu bar.

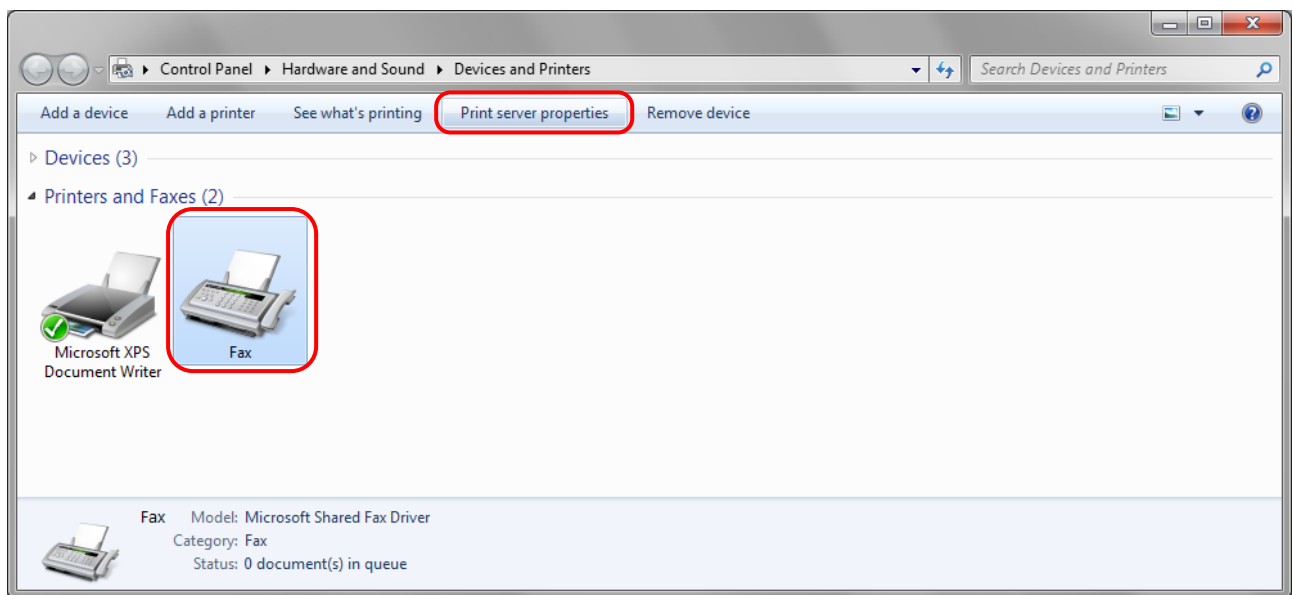


Fig 3.4 “Devices and Printers” window, showing the “Print server properties” menu

- (5) When the Print Server Properties window appears, click on the Drivers tab. From the list of installed printer drivers, select “CY”, and click the “Remove” button.

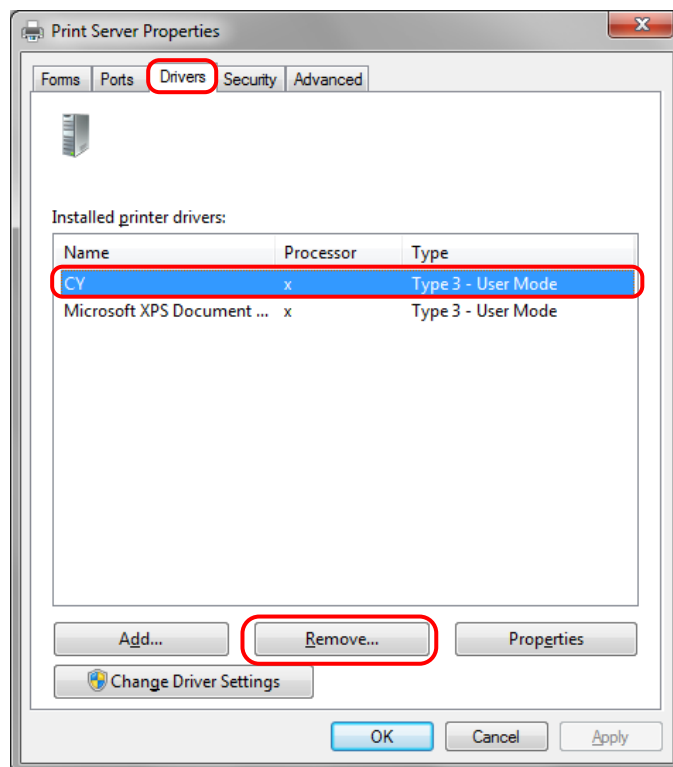


Fig 3.5 Print Server Properties window

- (6) When the Remove Driver and Package window appears, select “Remove driver only”, and click on the “OK” button. Removal of the driver package takes place in the next section “2. Uninstalling a Driver Package”.

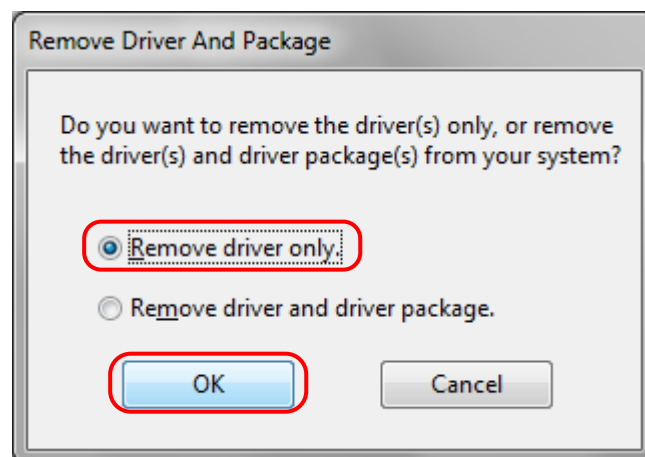


Fig 3.6 Remove Driver and Package window

(7) When the Print Server Properties confirmation window appears, click on the “Yes” button.

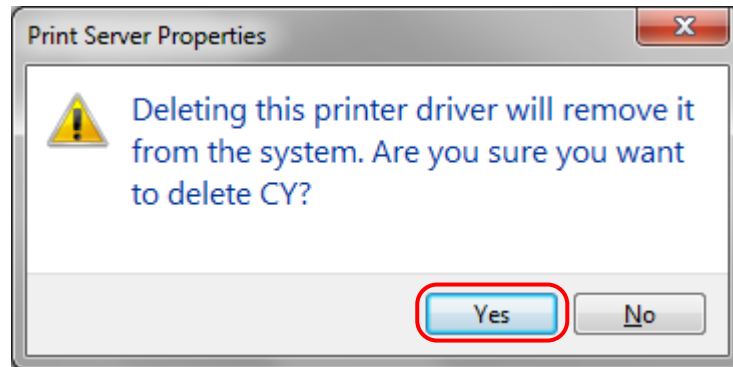


Fig 3.7 Print Server Properties confirmation window

(8) Using the Print Server Properties window, confirm that “CY” has been removed, and click on the “Close” button. After removing the printer driver, uninstall the driver package.

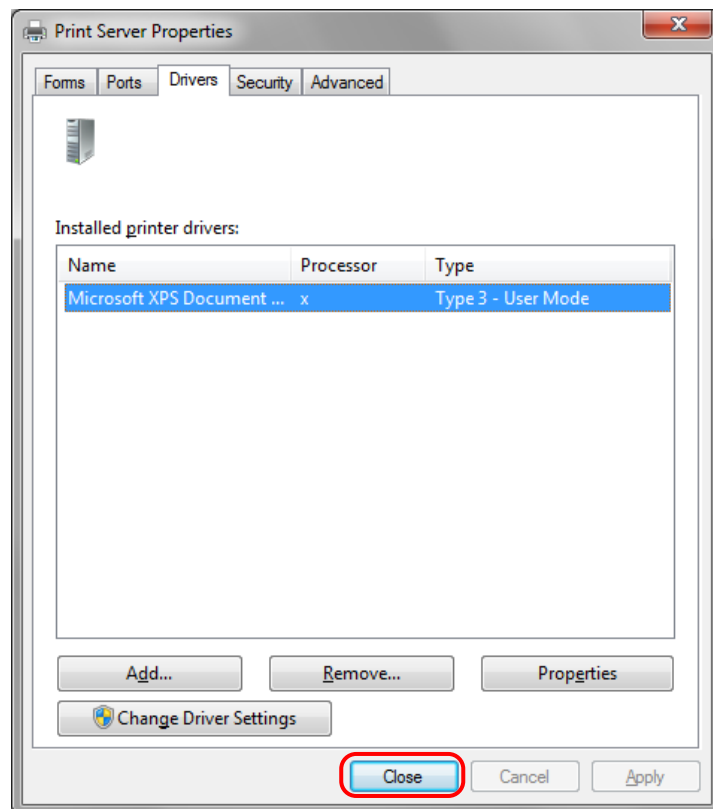


Fig 3.8 Print Server Properties window

2. Uninstalling a Driver Package

(1) Select “Start”, then “Control Panel”, and open the control panel. Click on “Uninstall a program” in the control panel.

In Windows 8, right click on the Start screen, select the right-under "All apps", select "Control Panel", click on "Uninstall a program" in the Control Panel.

In Windows 10, right click the Start., and then click "Control Panel". In the Control Panel, click "Uninstall a program".

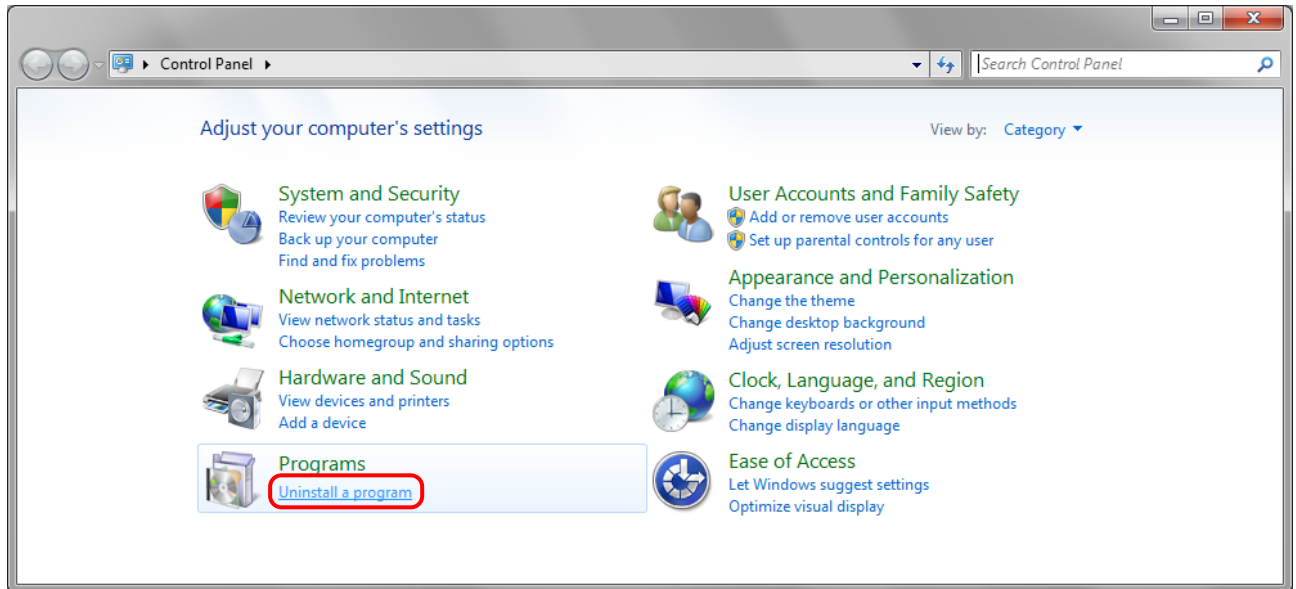


Fig 3.9 Control Panel

(2) When the “Uninstall or change a program” window appears, double-click on “Windows Driver Package – CITIZEN SYSTEMS CY (mm/dd/yyyy x.x.x.x)” (mm/dd/yyyy = the date, x.x.x.x = the version).

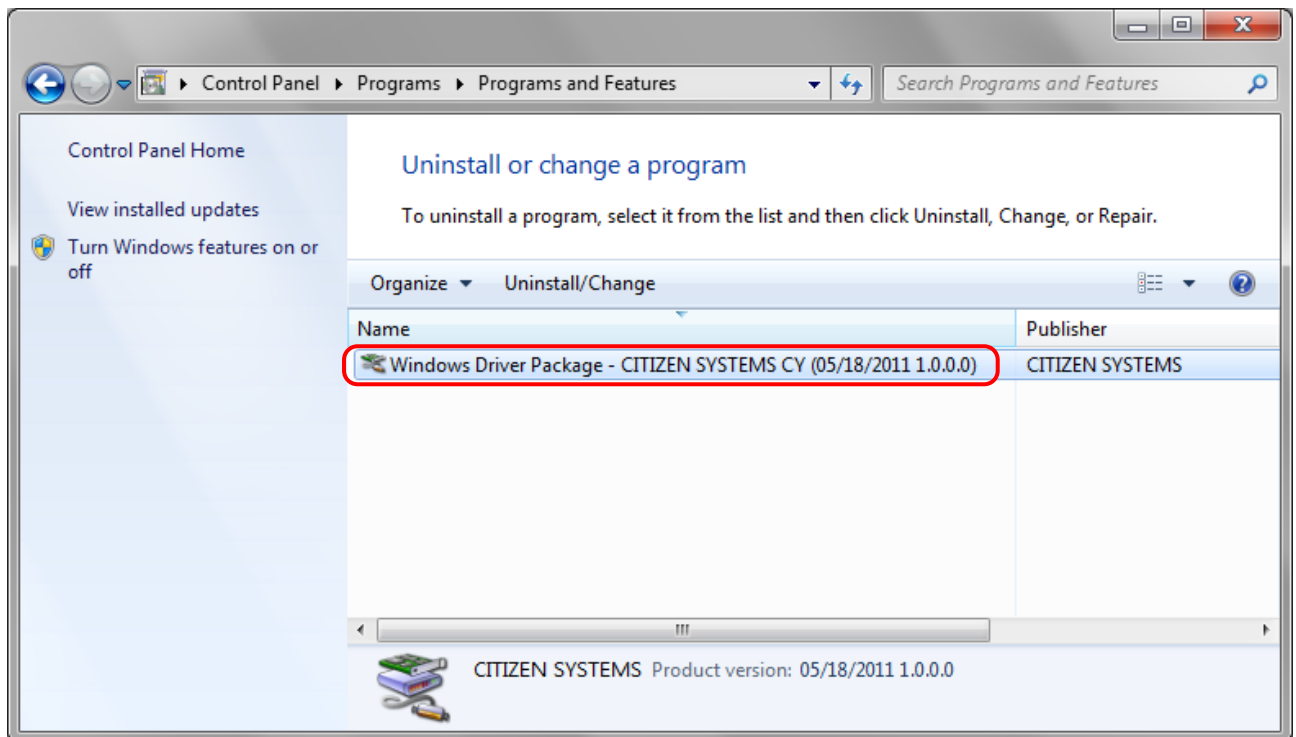


Fig 3.10 Uninstall a program

- (3) When the “Uninstall Driver Package” window appears, click on “Yes”.
The Uninstall will be completed.
After finished with uninstalling the driver package, reboot the computer.

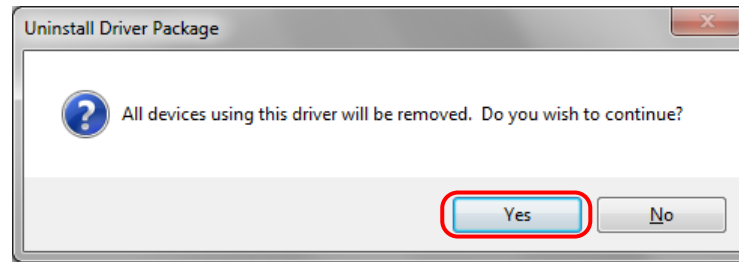


Fig 3.11 Uninstall confirmation window

3. Installing the printer-driver upgrade

After removing the printer and printer-driver, install the new printer-driver. For installation steps, please refer to Chapter 1 “Install”.

4. Rebooting the computer

After installation of the printer-driver is complete, be sure to reboot the computer.
(Do not print immediately after installation. First reboot the computer.)

Chapter 4 Driver Removal

For steps to remove the printer driver, refer to Chapter 3 “1. Driver Removal” and “2. Uninstalling a Driver Package”.